

Sec 4, TOWNSHIP 23 S. RANGE 5 W. W.M.

LOTS 14, 16, +¹⁵~~18~~ BLOCK ONE DEVORE'S ADDITION
SURVEY FOR DEED DESCRIPTIONS

FOR
CLAYTON C. Mills

YONCALLA, ORE

Scale: 1" = 100'

April 28, 1972

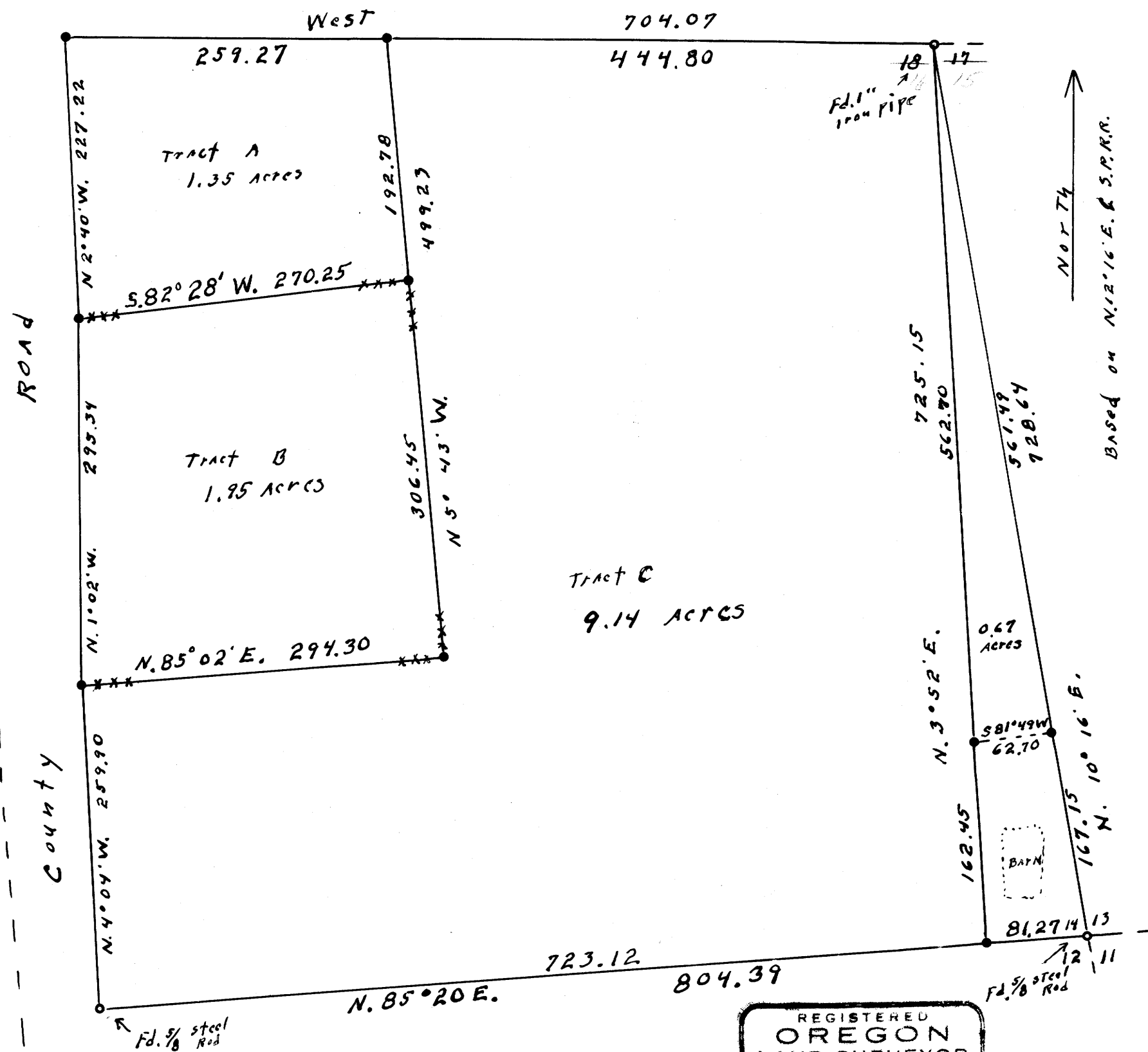
COUNTY SUPERVISORS FILE DATA
DO NOT REMOVE FROM OFFICE

FILED
RECEIVED

MAY 30 1972

COUNTY SURVEYOR
DOUGLAS COUNTY, ORE

MAP FILE M52-26



descriptions

TRACT A

Beginning at a 5/8" steel Rod from which the Northwest corner of Lot 18 Devore's Addition bears East 704.07 ft. Thence S. 2° 40' E. 227.22 ft. To a 5/8" steel Rod, Thence N 82° 28' E. 270.25 ft To a 5/8" steel Rod, Thence N 5° 43' W. 192.78 ft To a 5/8" steel Rod Thence West 259.27 ft. To the place of beginning.

TRACT B

Beginning at a 5/8" steel Rod from which the Northeast corner of Lot 18 Block one Devore's Addition bears N 2° 40' W. 227.22 ft. and East 704.07 ft., Thence S. 1° 02' E. 295.34 ft. To a 5/8" steel Rod Thence N. 85° 02' E. 294.30 ft. to a 5/8" steel Rod, Thence N. 5° 45' W. 306.45 ft. to a 5/8" steel Rod, Thence S. 82° 28' W. 270.25 ft. To the place of beginning.

TRACT C

Beginning at the Northeast corner of Lot 18, Block one Devore's Addition Thence West 444.80 ft to a 5/8" steel Rod, Thence S. 5° 45' E. 499.23 ft to a 5/8" steel Rod, Thence S. 85° 02' W. 294.30 ft. To a 5/8" steel Rod, Thence S. 4° 04' E. 259.90 ft. To a 5/8" steel Rod Thence N 85° 20' E 723.12 ft. To a 5/8" steel Rod, Thence N. 3° 52' W. 725.15 ft. To the place of beginning.

0.67 acres

Beginning at the Northeast corner of Lot 18 Block one Devore's Addition Thence S. 3° 52' E. 725.15 ft to a 5/8" steel Rod Thence N. 85° 20' E 81.27 ft. To a 5/8" steel Rod at the corner of Lots 11, 12, 13 + 14, Thence N. 10° 16' W. 728.64 ft To the place of beginning

• set 5/8" steel Rods
This survey

REGISTERED
OREGON
LAND SURVEYOR
WILFORD N. HAINES
MAY 7, 1948
WILFORD N. HAINES
239

MAP FILE M52-26