

COUNTY SURVEYORS FILE DATA
DO NOT REMOVE FROM OFFICE

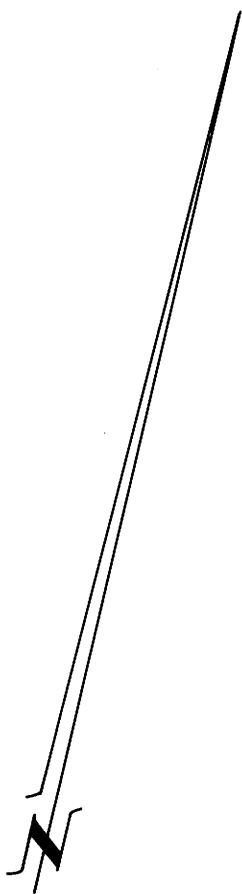
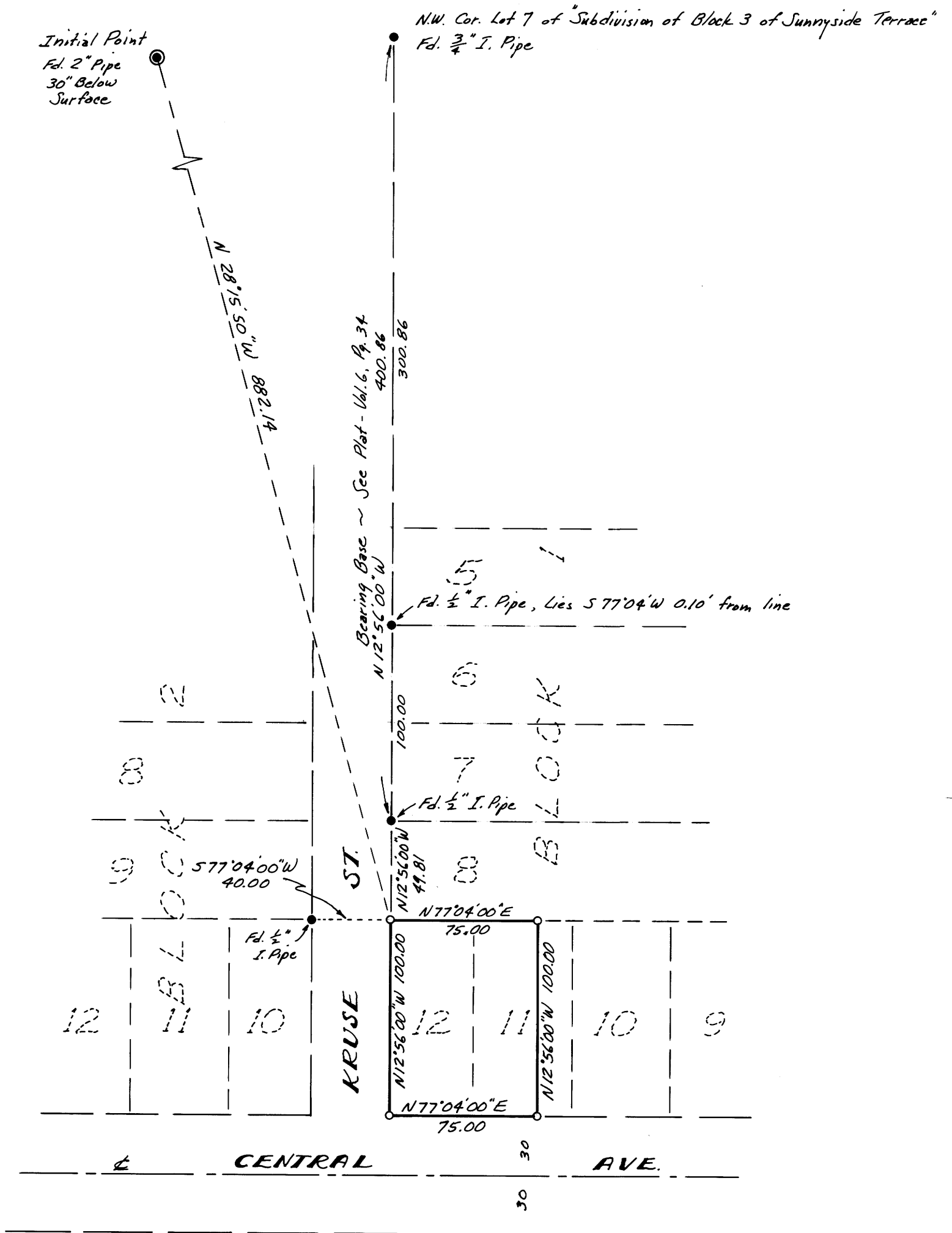
FILED ✓
RECEIVED *di*

MAY 30 1975

COUNTY SURVEYOR
DOUGLAS COUNTY, ORE.

SURVEY TO SET PROPERTY CORNERS
IN BL. 1, SUNNY SIDE TERRACE Sec. 19.
City of Sutherlin, Douglas County, Oregon T. 25S, R. 5W.
Surveyed for Sutherlin Discount by Victor M. McLind
May 1975 Scale: 1" = 60'

- ~ Indicates corner found as noted
- ~ Indicates set $\frac{5}{8}$ " x 30" Iron Rod



ASSOCIATE
PROFESSIONAL
LAND SURVEYOR
Victor M. McLind
Sutherlin, Oregon
1975