

Survey in Section 12, T24S, R5W, W.M.

Survey for Jesse C. Coon

Survey by B.H.W. Eng. & Surveying, Inc.

May 1975

Scale 1" = 300'

o — Set 3/4" iron pipe

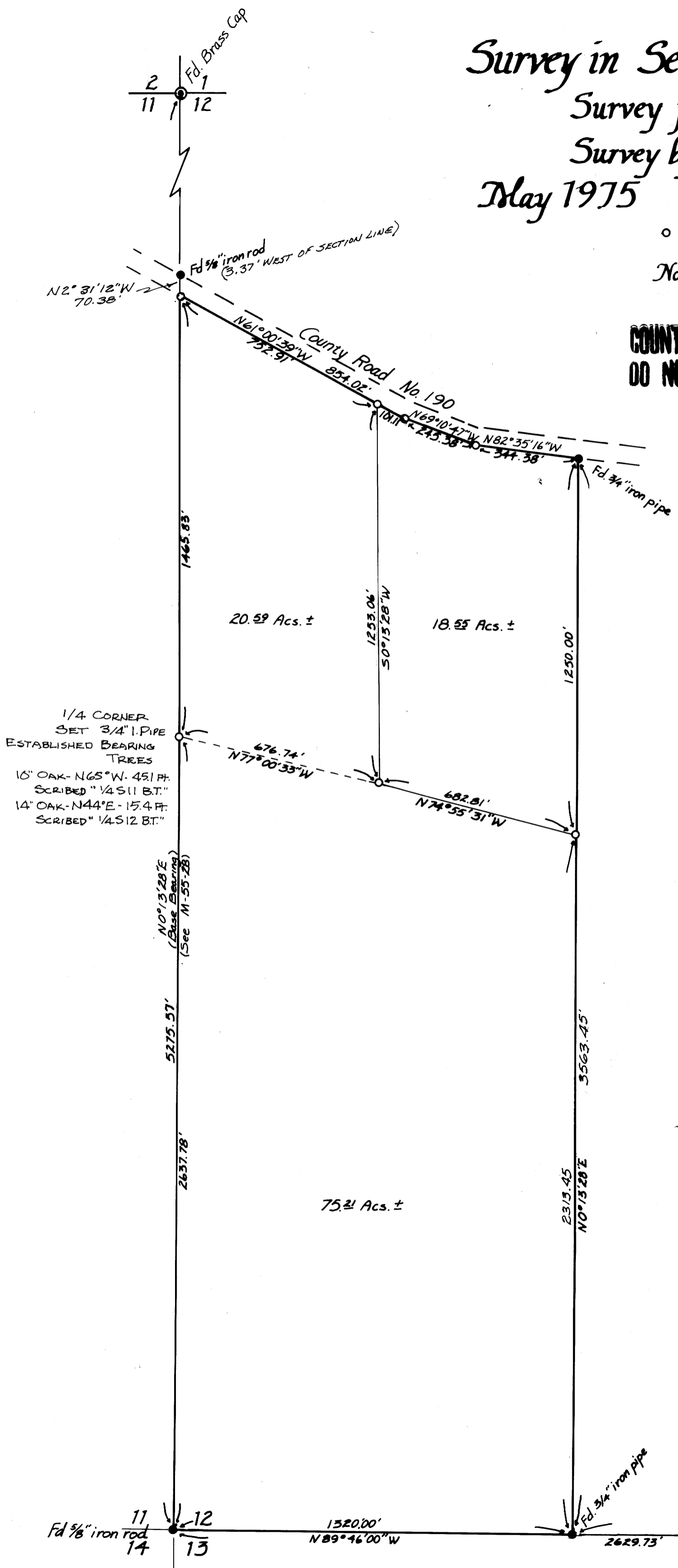
Note: for Record Bearings, Distances & Found Monuments See M55-2

**COUNTY SURVEYORS FILE DATA
DO NOT REMOVE FROM OFFICE**

FILED ✓
RECEIVED ✓

MAY 27 1975

COUNTY SURVEYOR
DOUGLAS COUNTY, ORE.
✓



REGISTERED
PROFESSIONAL
LAND SURVEYOR

Romano E. Ware

OREGON
NOV 18, 1973
ROMANSO E. WARE
1005