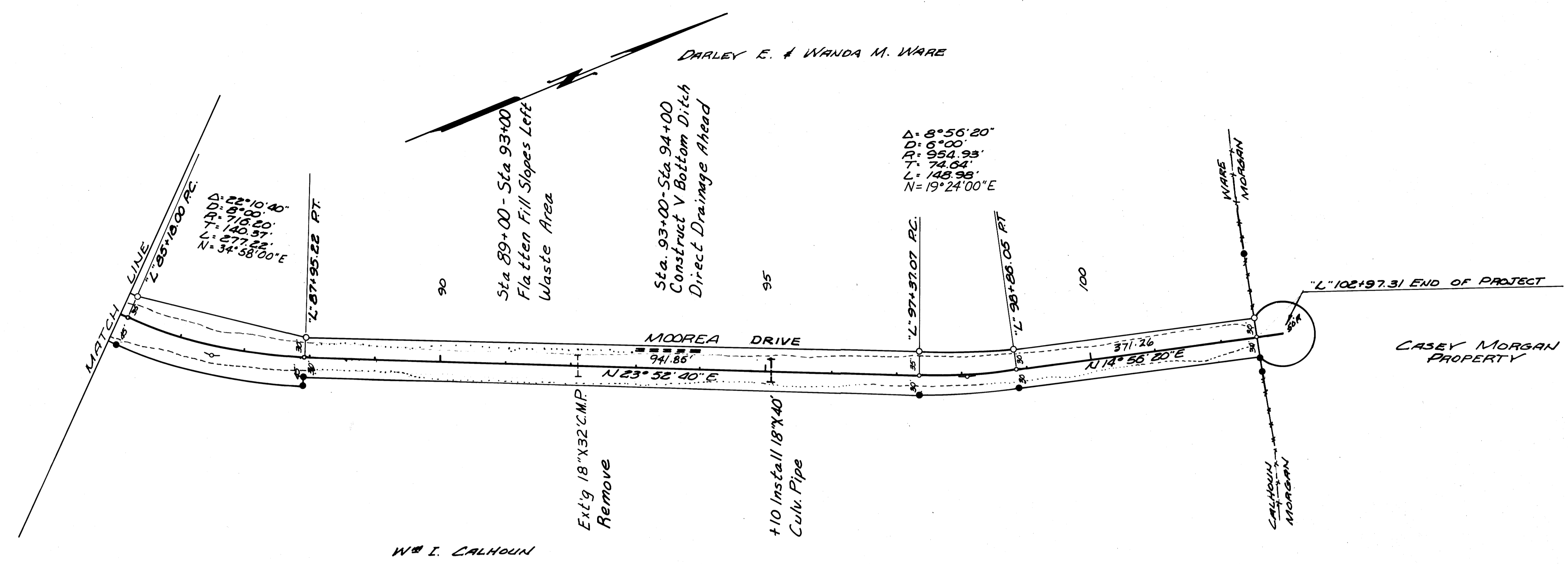


COUNTY SURVEYORS FILE DAY
 DO NOT REMOVE FROM OFFICE

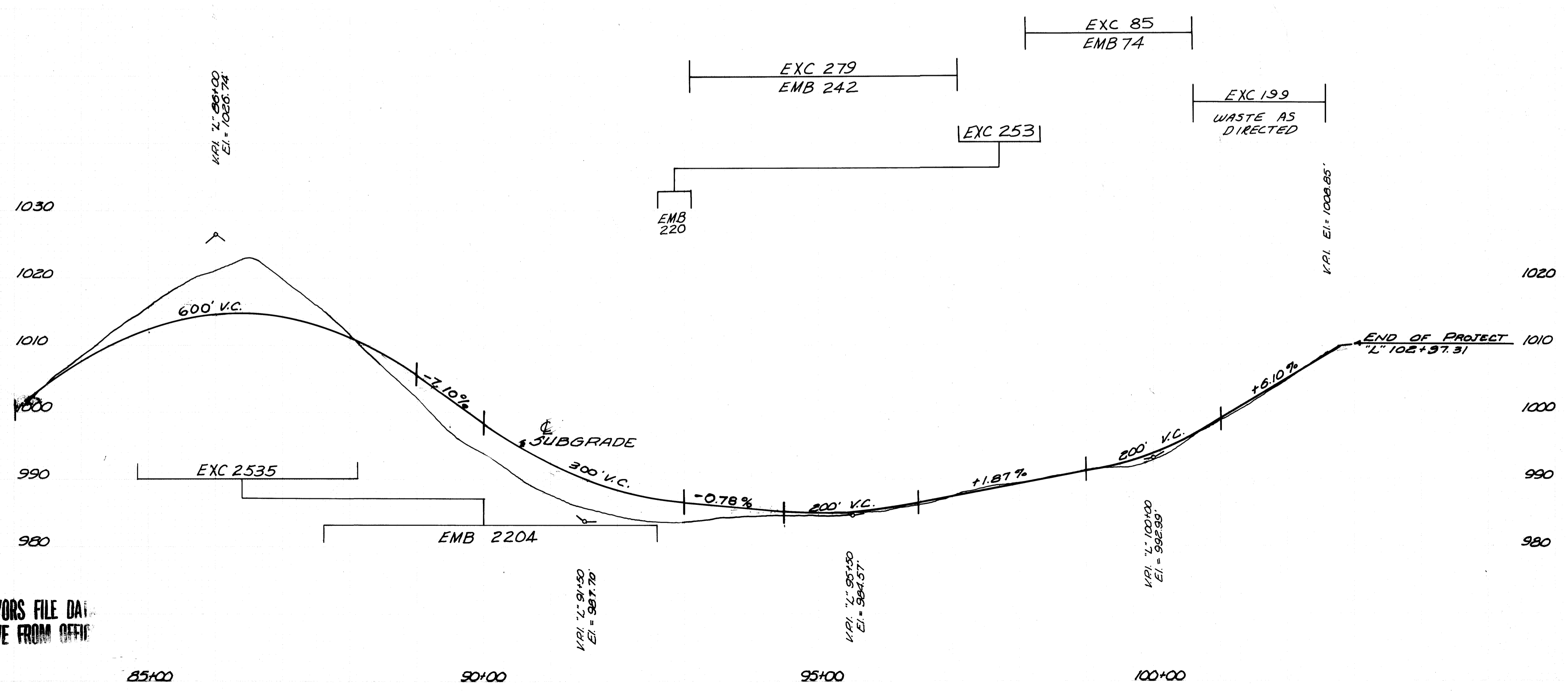
FILED
 RECEIVED *24*
 FEB 16 1977

COUNTY SURVEYOR
 DOUGLAS COUNTY, ORE.
1

PLAN	DATE
BY	
CHECKED	
APPROVED	
DATE	



PROFILE	DATE
BY	
CHECKED	
APPROVED	
DATE	



COUNTY SURVEYORS FILE DAY
 DO NOT REMOVE FROM OFFICE

REGISTERED
 PROFESSIONAL
 LAND SURVEYOR

Romano E. Ware

OREGON
 ROMANEO E. WARE
 1965

KLINE ST. EXTENSION
 &
MOOREA DRIVE

ENGINEERED FOR CASEY MORGAN
 BY BHW ENG & SURVEYING, INC.
 APRIL, 1974 PAGE 5 OF 5