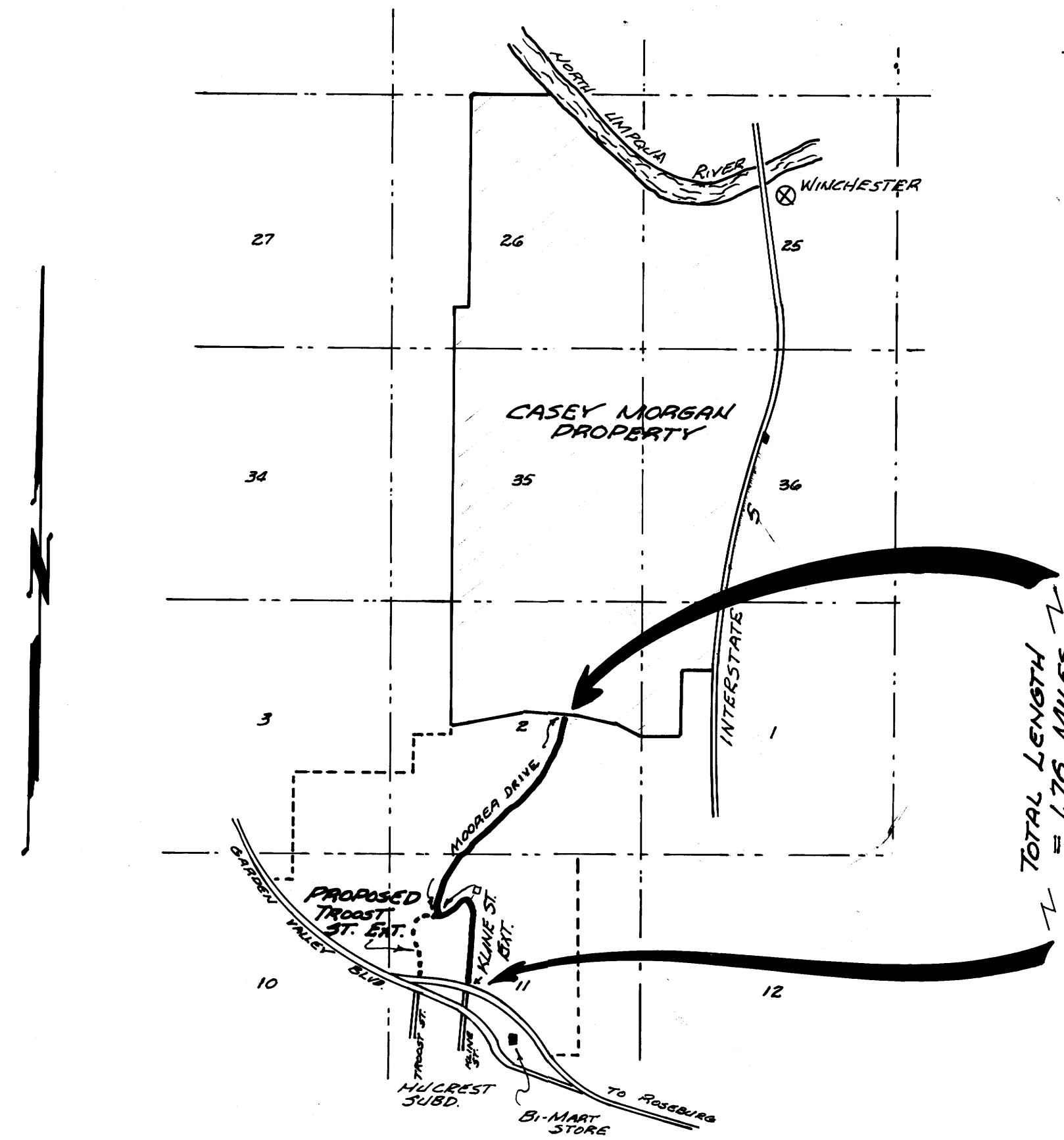


FILED 7
RECEIVED 77
FEB 16 1977
COUNTY SURVEYOR
DOUGLAS COUNTY, ORE.
7

KLINE STREET EXTENSION & MOOREA DRIVE

LOCATED IN SECTIONS 2 & 11, T27S, R6 W, W.M.
ENGINEERED FOR CASEY MORGAN
BY BHVY ENGINEERING & SURVEYING, INC.

REGISTERED
PROFESSIONAL
LAND SURVEYOR
Romano E. Wade
OREGON
ROMANO E. WADE
1955



NOTE: ENGINEERING BY R. HENSON & D. SCROSSIN'S
SURVEYING & MONUMENTATION BY R. WADE &
COMPLETED JAN., 1977.

- — DESIGNATES SET 5/8" I. ROD
- — DESIGNATES FD. MONUMENT

BEARINGS BASED ON EDENBORNE-MILLWOOD COUNTY
ROAD No. 6.

END OF PROJECT
STA. "L" 102+57.31

BEGINNING OF PROJECT
STA. "L" 9+41.33

VICINITY MAP
SCALE: 1" = 1/2 MILE

COUNTY SURVEYORS FILE NO. 1153-25A
DO NOT REMOVE FROM OFFICE