

MAP FILE M56-77

FILED
RECEIVED
JAN 23 1977
COUNTY SURVEYOR
DOUGLAS COUNTY, ORE.

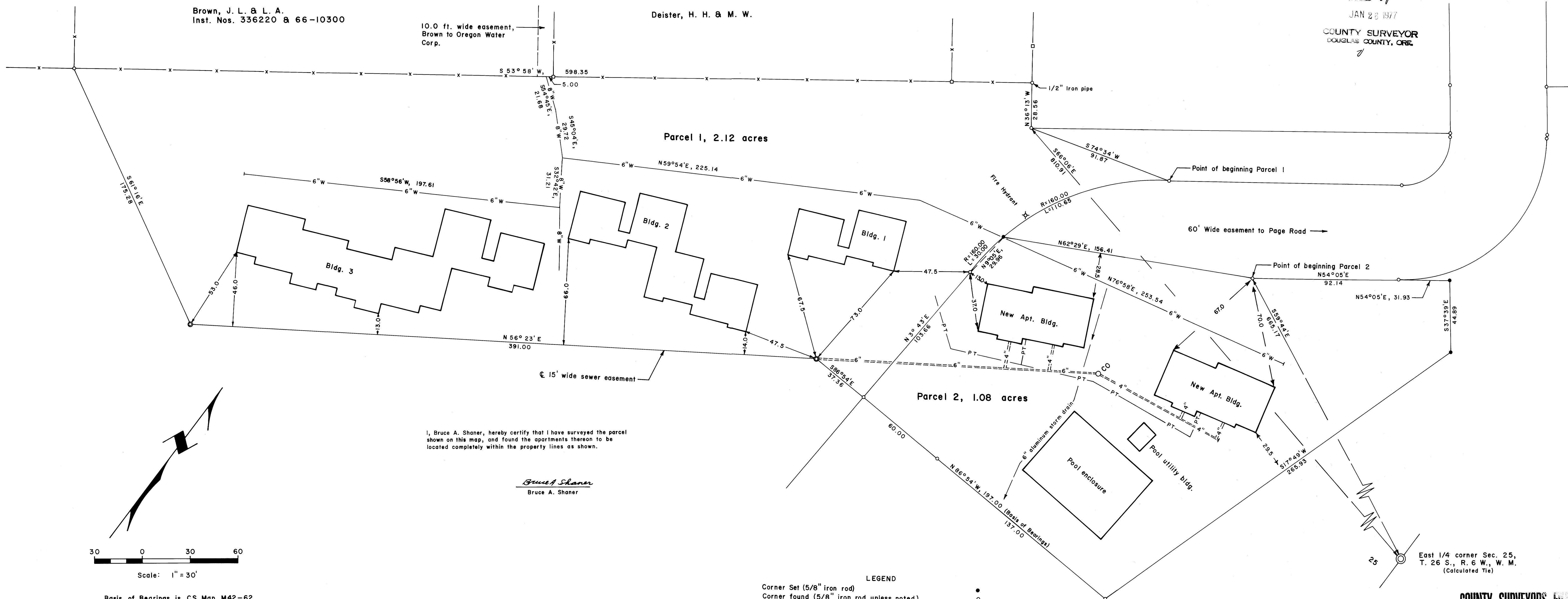
Brown, J. L. & L. A.
Inst. Nos. 336220 & 66-10300

Deister, H. H. & M. W.

10.0 ft. wide easement,
Brown to Oregon Water
Corp.

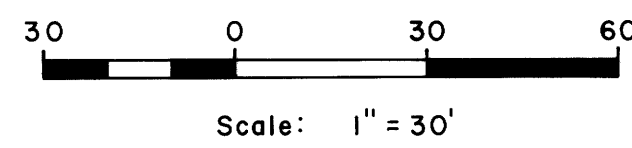
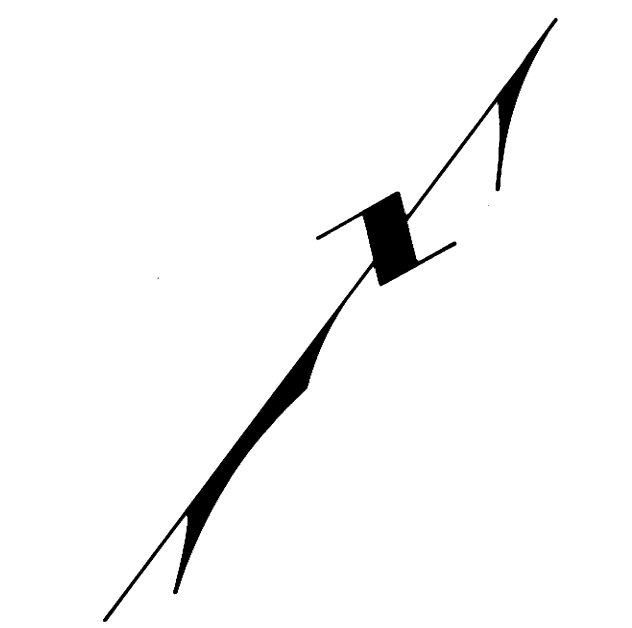
Parcel 1, 2.12 acres

Parcel 2, 1.08 acres



I, Bruce A. Shaner, hereby certify that I have surveyed the parcel shown on this map, and found the apartments thereon to be located completely within the property lines as shown.

Bruce A. Shaner
Bruce A. Shaner



Basis of Bearings is CS Map M42-62.



LEGEND

Corner Set (5/8" iron rod)	●
Corner found (5/8" iron rod unless noted)	○
Wooden fence post	□
Barb wire fence	-x-x-
Manhole (Center)	⊙
Sanitary sewer	=====
Water line and 6" water easement	-W-W-
Underground power & telephone line	-PT-PT-
Cleanout	○ CO

For additional information see County Surveyor Map M42-62.

East 1/4 corner Sec. 25,
T. 26 S., R. 6 W., W. M.
(Calculated Tie)

COUNTY SURVEYORS FILE DATA
DO NOT REMOVE FROM OFFICE

A. L. T. A. SURVEY ON PARCEL IN SE 1/4 NE 1/4,
NE 1/4 SE 1/4, SEC. 25, T. 26 S., R. 6 W., W. M.
for Saddle Butte Development Co.
a Division of L&H Lumber Co.
By: Shaner Engineering, Inc.
January 25, 1977

MAP FILE M56-77