

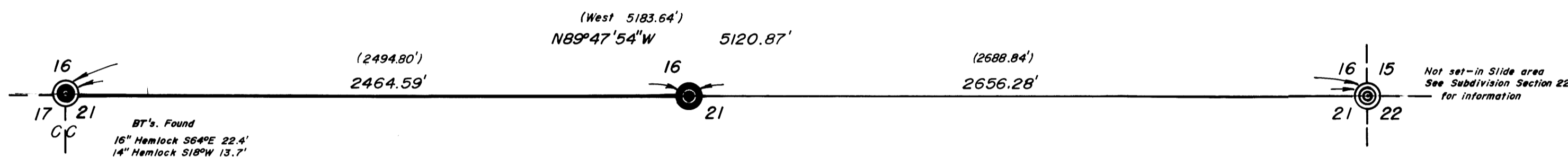
**SURVEY FOR U.S. FOREST SERVICE
OF THE NORTH LINE-SEC. 21, T.31S. R.2W.W.M.**

DOUGLAS COUNTY, OREGON

BY: BAUGHMAN SURVEYING SERVICE, ROSEBURG, OREGON

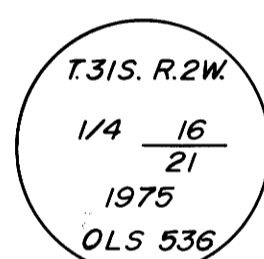
JANUARY 1975 SCALE: 1" = 400'

FILED ✓
RECEIVED ✓
FEB 13 1975
COUNTY SURVEYOR
DOUGLAS COUNTY, OREGON



LEGEND

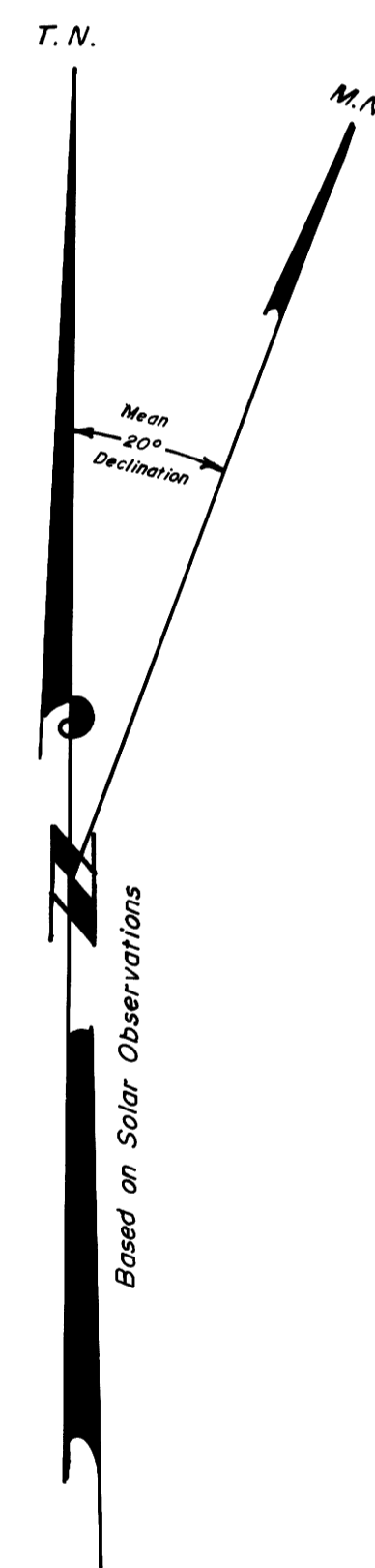
- ⊙ — Found Brass cap
- — Set Brass cap
- True line posted with steel fence posts and government property signs.
- () — Record Calls



1/4 Corner between Sections 16 & 21
Set 2" iron pipe with 3" brass cap stamped as shown
From which bears:
A 13" Pine N22°W 47.5' scribed 1/4 S16 BT
A 10" Pine S59°W 36.2' scribed 1/4 S21 BT

I, GLENN S. BAUGHMAN, a registered professional land surveyor in the State of Oregon hereby certify that this plat and the notes hereon, or attached, are a correct representation of a survey I performed during October thru December 1974 and January and February 1975, for the U.S. Forest Service, in accordance with statutes of the State of Oregon and with the Articles of my contract.

Glenn S. Baughman
GLENN S. BAUGHMAN



Glenn S. Baughman

CERTIFIED RECORD OF LAND CORNER MONUMENTATION

History of original corner establishment:

DIAGRAM
T31S R2W
1/4 S16
S21

OLS 536 1975

Original Survey record states:

Set 1/4 Section Post at 40 chains, from which bears
an Oak 18 inches in diameter S40°W 45 lks.
an Oak 12 inches in diameter N60°W 8 lks.
Summit of very high ridge course North and South.

Description of corner evidence found:

NONE

Searched for but could not find any evidence of old Corner or original bearing trees.

REGISTERED
PROFESSIONAL
LAND SURVEYOR

Glenn S. Baughman

OREGON
JULY 14, 1961
GLENN S. BAUGHMAN
536

Description of monument and accessories I established to perpetuate the original location of this corner

I set a 30 inch long, 2 1/2 inch diameter galvanized iron pipe 26" in the ground in mound of stone, with 3 inch brass cap stamped:

T31S R2W
1/4 S16
S21

OLS 536 1975

BEARING TREES:

A Pine, 13 inch diameter bears N22°W 47.5 feet, scribed 1/4 S16 (BT) with brass washer stamped LS 536 nailed at BT. Blaze

A Pine 10 inch diameter bears S.59°W. 36.2 feet, scribed 1/4 S21 (BT) with brass washer stamped LS 536 Nailed at BT. Blaze

NOTE: Both trees have a 6 inch red band painted around tree.

CORNER lies on gentle West slope approximately 30 feet West of North-South ridge and 30 feet East of North-South timber line.

From Book # 1 , page #20 , Tiller Land Survey, Contract #004610N. (Extra work)

Office of *Surveyor* County of *Douglas*
State of *Oregon* , I hereby certify that the within instrument was filed in this office for record on the *13* day of *February*.
Francis L. Ingram by *Virginia P. Yates*
(COUNTY OFFICIAL) (DEPUTY)

CERTIFIED RECORD OF LAND CORNER MONUMENTATION

History of original corner establishment:

DIAGRAM
T31S R2W
1/4 S16
S21

OLS 536 1975

Original Survey record states:

Set 1/4 Section Post at 40 chains, from which bears
an Oak 18 inches in diameter S40°W 45 lks.
an Oak 12 inches in diameter N60°W 8 lks.
Summit of very high ridge course North and South.

Description of corner evidence found:

NONE

Searched for but could not find any evidence of old Corner or original bearing trees.

REGISTERED
PROFESSIONAL
LAND SURVEYOR

Glenn S. Baughman

OREGON
JULY 14, 1961
GLENN S. BAUGHMAN
536

Description of monument and accessories I established to perpetuate the original location of this corner

I set a 30 inch long, 2 1/2 inch diameter galvanized iron pipe 26" in the ground in mound of stone, with 3 inch brass cap stamped:

T31S R2W
1/4 S16
S21

OLS 536 1975

BEARING TREES:

A Pine, 13 inch diameter bears N22°W 47.5 feet, scribed 1/4 S16 (BT) with brass washer stamped LS 536 nailed at BT. Blaze

A Pine 10 inch diameter bears S.59°W. 36.2 feet, scribed 1/4 S21 (BT) with brass washer stamped LS 536 Nailed at BT. Blaze

NOTE: Both trees have a 6 inch red band painted around tree.

CORNER lies on gentle West slope approximately 30 feet West of North-South ridge and 30 feet East of North-South timber line.

From Book # 1 , page #20 , Tiller Land Survey, Contract #004610N. (Extra work)

Office of *Surveyor* County of *Douglas*
State of *Oregon* , I hereby certify that the within instrument was filed in this office for record on the *13* day of *February*.
Francis L. Ingram by *Virginia P. Yates*
(COUNTY OFFICIAL) (DEPUTY)