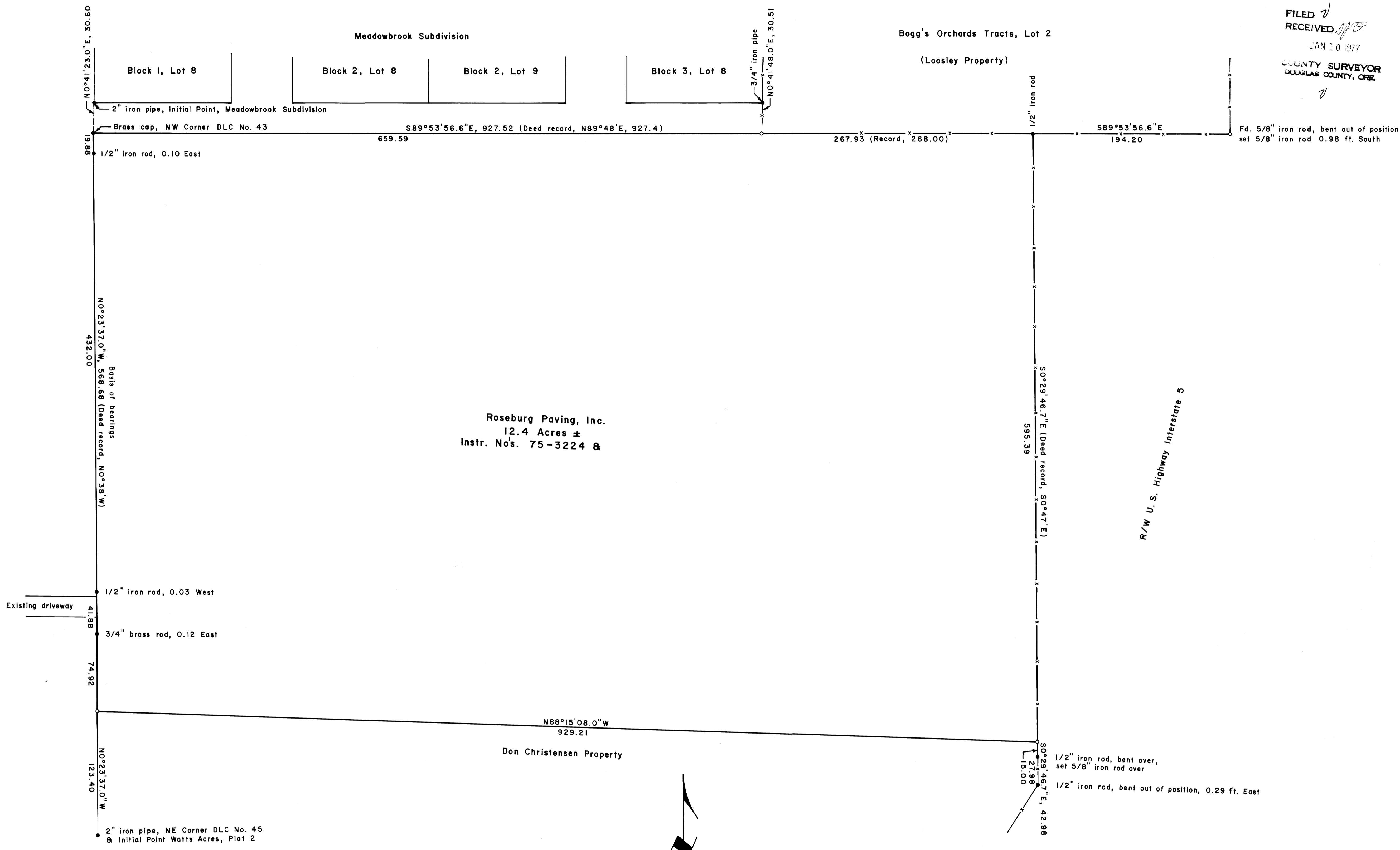


FILED  
RECEIVED  
JAN 10 1977  
COUNTY SURVEYOR  
DOUGLAS COUNTY, ORE.



Roseburg Paving, Inc.  
12.4 Acres ±  
Instr. No's. 75-3224 &

Don Christensen Property

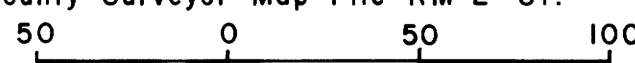
R/W U. S. Highway Interstate 5

PROPERTY LINE SURVEY IN THE CHARLES W. SMITH  
DONATION LAND CLAIM NO. 43 & THE NE 1/4 NE 1/4  
SECTION 11, T. 28 S., R. 6 W., W. M., DOUGLAS COUNTY, OREGON

For: Roseburg Paving, Inc.  
By: Shaner Engineering, Inc.

December 28, 1976

Basis of bearings: DLC line between NW Corner  
DLC No. 43 & NE Corner DLC No. 45, as filed  
in County Surveyor Map File RM 2-81.



Scale: 1" = 50'

LEGEND

- Corner found, as noted
- Corner set, 5/8" iron rod with aluminum cap
- Fence

