

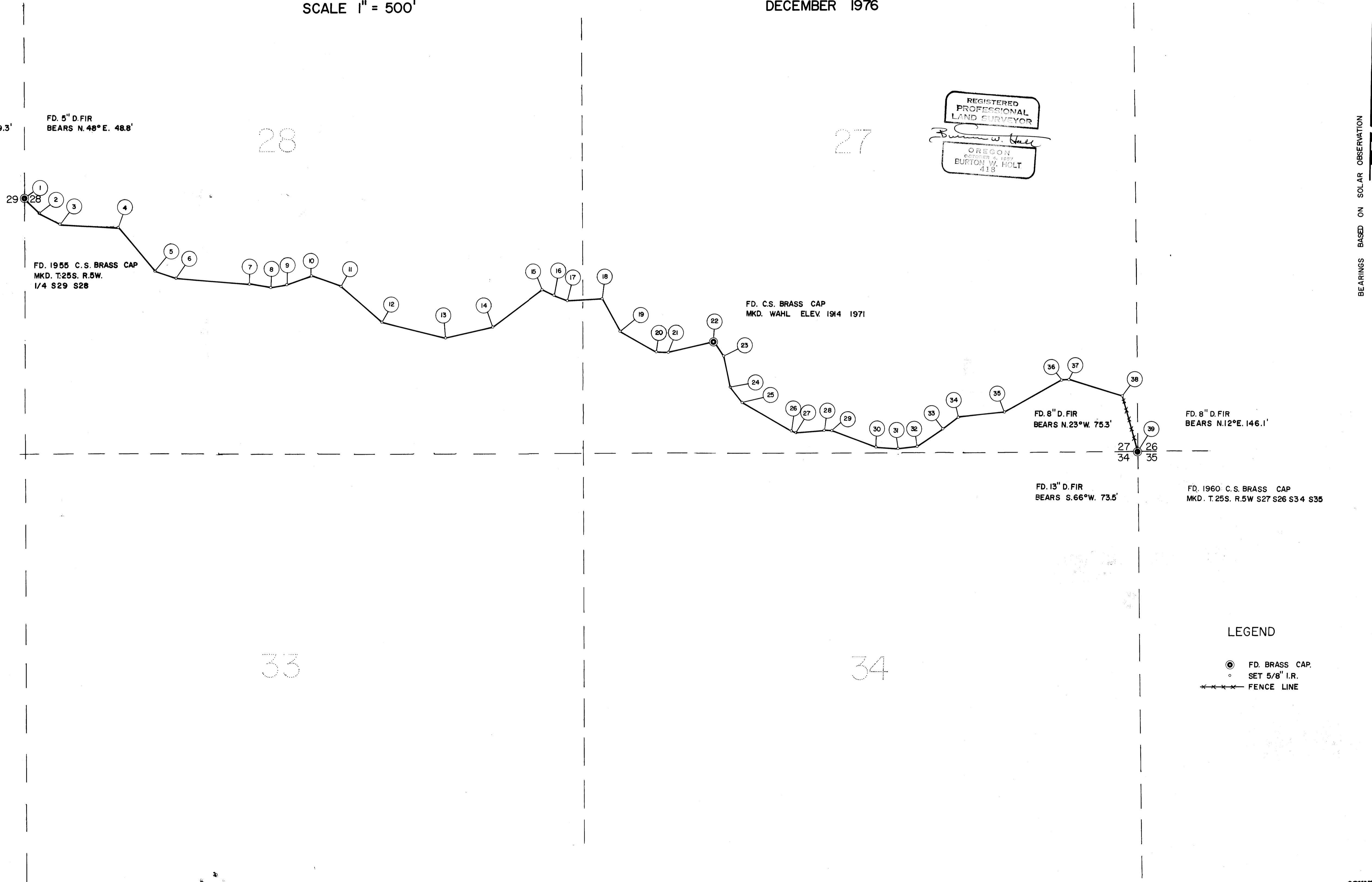
SURVEY FOR METES & BOUNDS DESCRIPTION IN SEC. 27 & 28, T.25S., R.5W., W.M. FOR WAHL ESTATE

BY BURTON W. HOLT

SCALE 1" = 500'

DECEMBER 1976

NO.	BEARING	DISTANCE	DESCRIPTION
1	S. 45° 23' 19" E.	196.16'	BRASS CAP
2	S. 65° 24' 04" E.	227.51'	5/8" I.R.
3	S. 85° 25' 09" E.	553.40'	5/8" I.R.
4	S. 40° 43' 04" E.	548.47'	5/8" I.R.
5	S. 68° 25' 09" E.	211.64'	5/8" I.R.
6	S. 85° 58' 44" E.	713.94'	5/8" I.R.
7	S. 78° 51' 39" E.	208.05'	5/8" I.R.
8	N. 75° 49' 06" E.	150.46'	5/8" I.R.
9	N. 73° 14' 01" E.	249.12'	5/8" I.R.
10	S. 72° 09' 54" E.	296.60'	5/8" I.R.
11	S. 48° 41' 29" E.	533.78'	5/8" I.R.
12	S. 75° 53' 24" E.	625.88'	5/8" I.R.
13	N. 75° 16' 31" E.	467.91'	5/8" I.R.
14	N. 55° 35' 36" E.	586.52'	5/8" I.R.
15	S. 63° 23' 29" E.	120.08'	5/8" I.R.
16	S. 68° 06' 54" E.	121.83'	5/8" I.R.
17	N. 87° 49' 31" E.	339.64'	5/8" I.R.
18	S. 30° 33' 26" E.	345.20'	5/8" I.R.
19	S. 58° 46' 21" E.	405.35'	5/8" I.R.
20	S. 87° 13' 26" E.	115.46'	5/8" I.R.
21	N. 77° 37' 29" E.	448.09'	5/8" I.R.
22	S. 34° 50' 36" E.	153.45'	BRASS CAP
23	S. 11° 16' 41" E.	315.63'	5/8" I.R.
24	S. 40° 16' 46" E.	186.00'	5/8" I.R.
25	S. 58° 55' 31" E.	542.24'	5/8" I.R.
26	S. 69° 00' 46" E.	52.15'	5/8" I.R.
27	N. 84° 18' 19" E.	270.76'	5/8" I.R.
28	S. 83° 31' 46" E.	75.86'	5/8" I.R.
29	S. 69° 28' 16" E.	452.25'	5/8" I.R.
30	S. 85° 52' 31" E.	208.57'	5/8" I.R.
31	N. 83° 16' 49" E.	181.62'	5/8" I.R.
32	N. 56° 48' 09" E.	304.57'	5/8" I.R.
33	N. 52° 30' 14" E.	182.76'	5/8" I.R.
34	N. 84° 21' 49" E.	456.86'	5/8" I.R.
35	N. 61° 40' 31" E.	586.80'	5/8" I.R.
36	N. 88° 10' 46" E.	59.62'	5/8" I.R.
37	S. 73° 13' 35" E.	531.47'	5/8" I.R.
38	S. 15° 23' 37" E.	574.29'	5/8" I.R.
39			BRASS CAP



REGISTERED
PROFESSIONAL
LAND SURVEYOR
Burton W. Holt
OREGON
EXPIRES 12 31 1987
BURTON W. HOLT
418

BEARINGS BASED ON SOLAR OBSERVATION

LEGEND

- ⊙ FD. BRASS CAP.
- SET 5/8" I.R.
- FENCE LINE