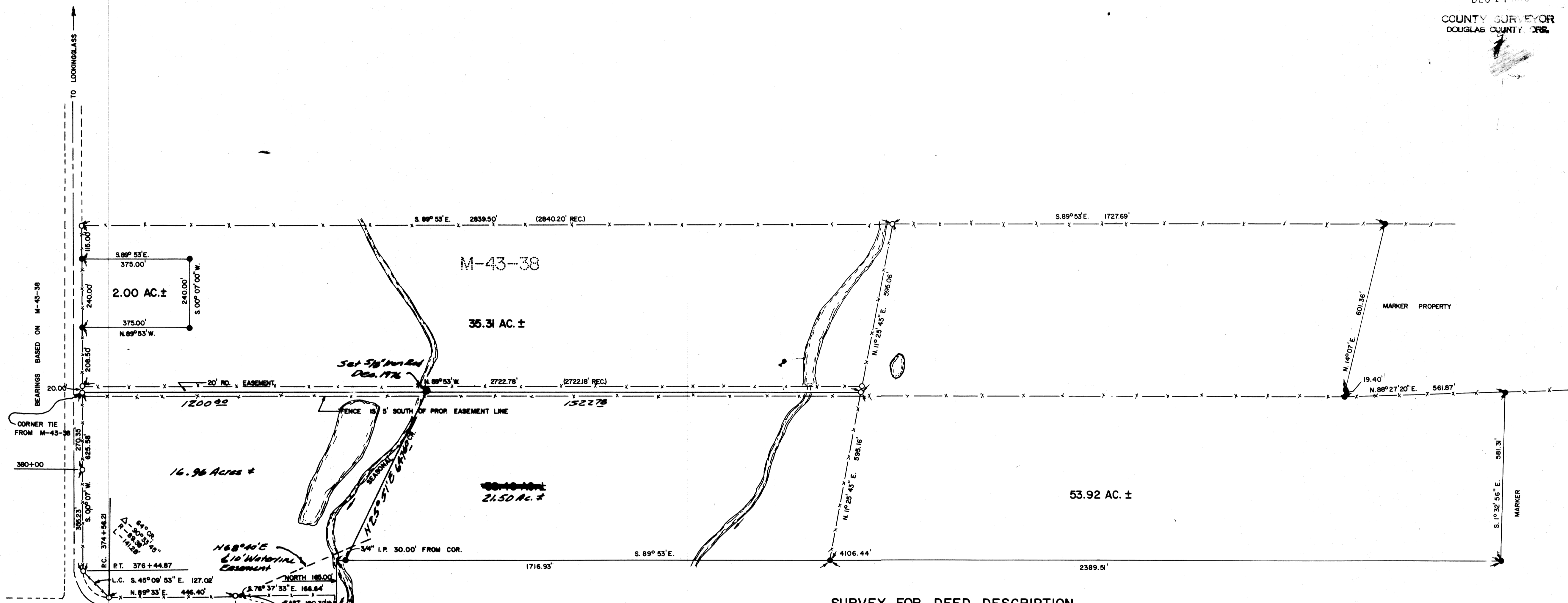


COUNTY SURVEYORS FILE DATA
DO NOT REMOVE FROM OFFICE

FILED
RECEIVED *vr*
DEC 17 1976
COUNTY SURVEYOR
DOUGLAS COUNTY ORE



LEGEND

- FD. 5/8" I.R.
- SET 3/4" I.P.
- ⊙ FD. BRASS CAP N.E. COR. D.L.C. 40
- x—x— FENCE LINE

Δ+27° 36' 24"
L = 108.27
C = 108.64
R = 348.8'

SURVEY FOR DEED DESCRIPTION
IN SEC.'S 1 & 2, T. 28 S., R. 7 W., W.M.
FOR—MR. WAYNE WEST
SURVEYED BY—BRUCE ROGERS
DRWN. BY—RONALD COOK
SCALE 1"=200' ~~FEBRUARY 1976~~
REVISED - DEC. 1976 B.L.L.
M 56-32

REGISTERED
D
I
Bruce L. Rogers
BRUCE L. ROGERS
660

COUNTY SURVEYORS FILE DATA
DO NOT REMOVE FROM OFFICE