

SURVEY IN SEC. 7, T. 29 S., R. 7 W. W.M.

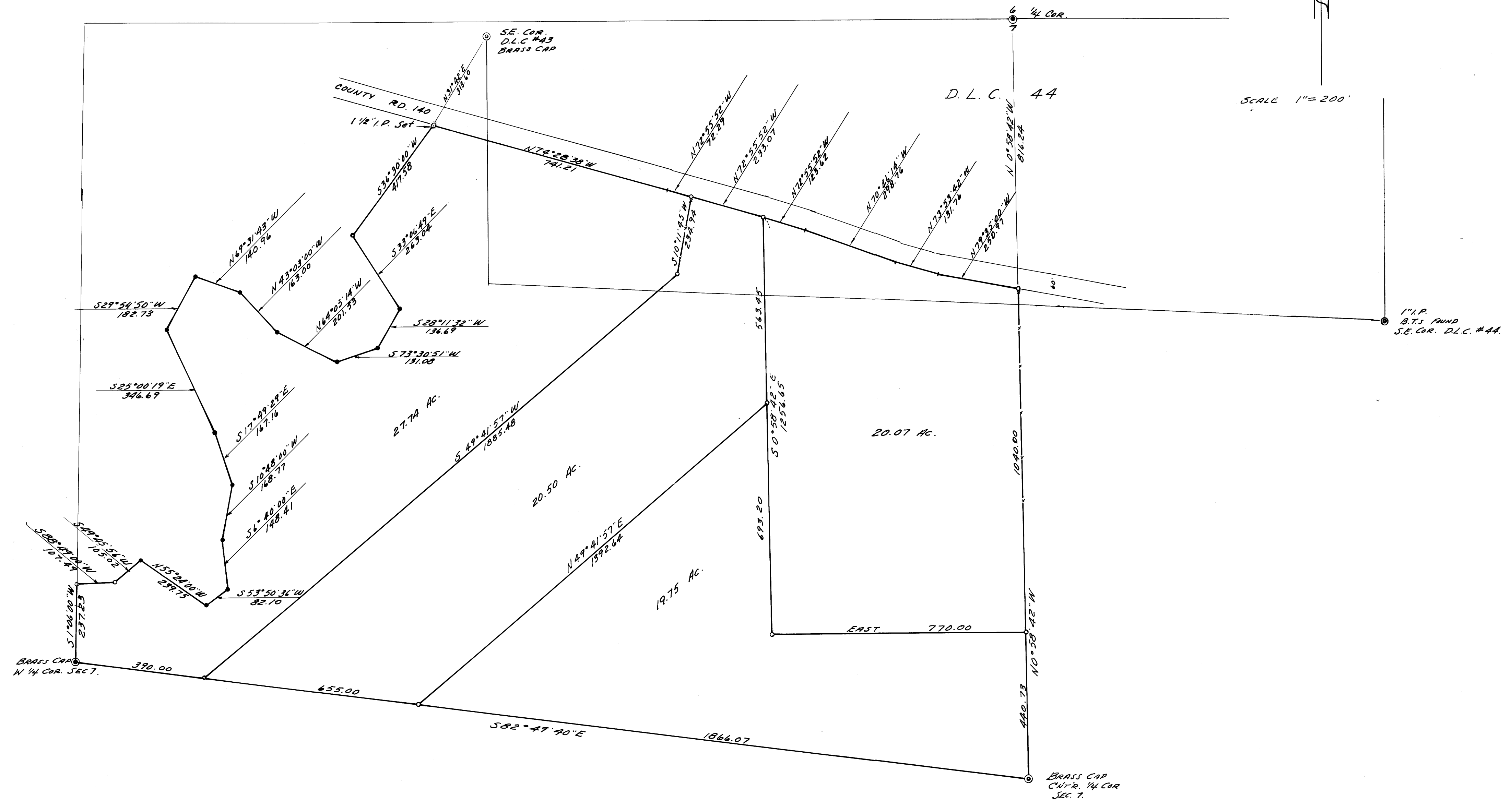
SURVEYED FOR - EUGENE THOMPSON
SURVEYED BY - W.S. BARNES

OCT. 1976

COUNTY SURVEYORS FILE DATA
DO NOT REMOVE FROM OFFICE

FILED
RECEIVED
NOV 9 1976
COUNTY SURVEYOR
KINGBEE COUNTY, ORE.

SCALE 1" = 200'



- Denotes $\frac{5}{8}$ " iron rods found
 - Denotes $\frac{3}{8}$ " iron rods set.
- Base bearing taken from N-S centerline Sec. 7.
Reference - C.S. Map M20-48

COUNTY SURVEYORS FILE DATA
DO NOT REMOVE FROM OFFICE

