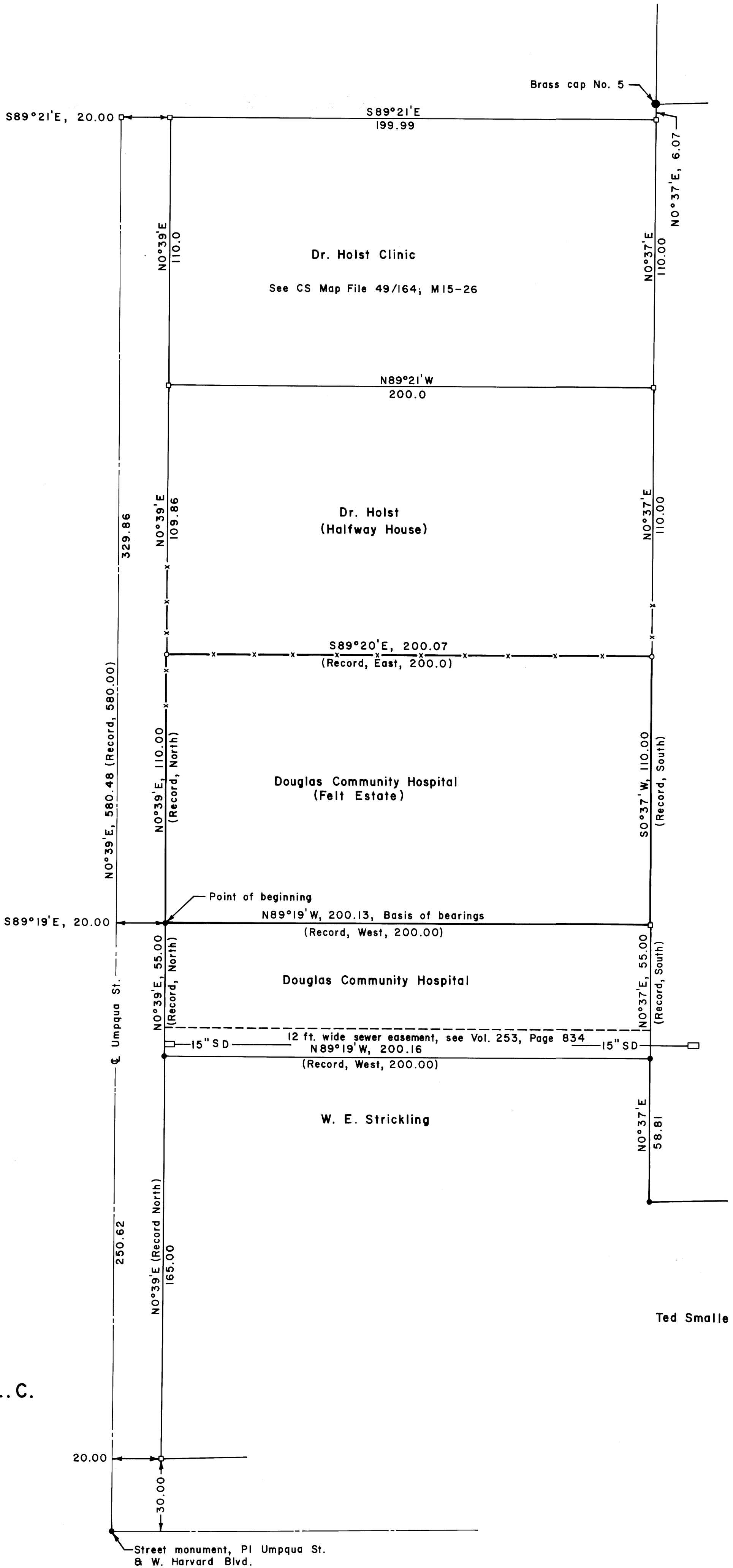
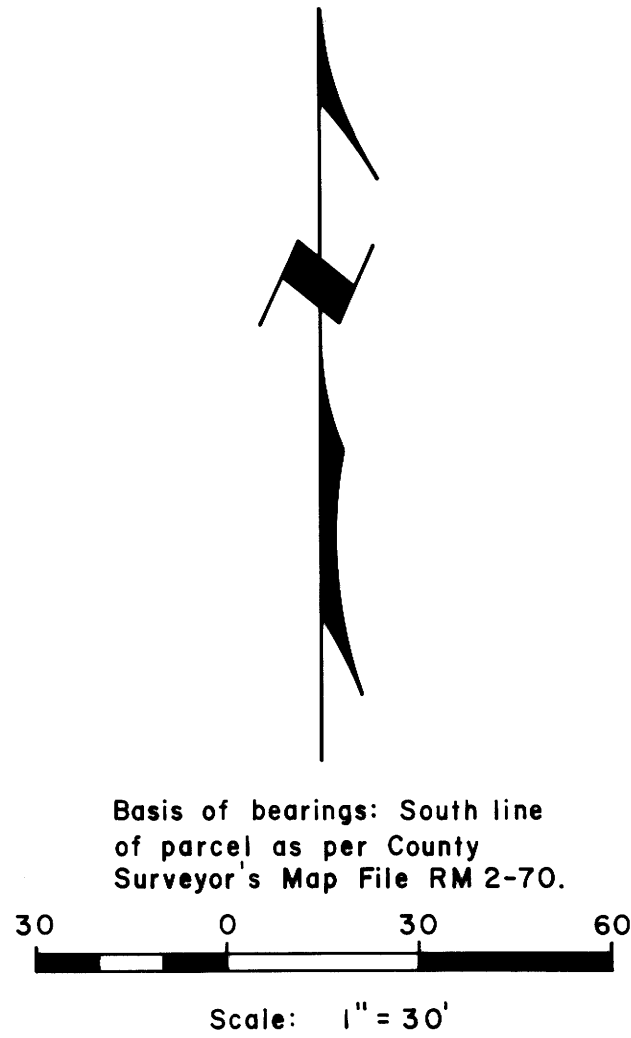
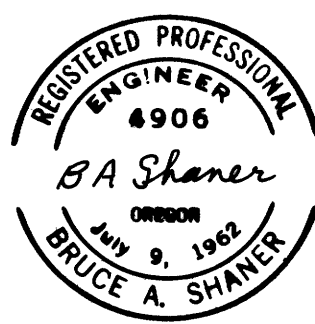


FILED ✓  
RECEIVED ✓  
NOV 2 1976  
COUNTY SURVEYOR  
DOUGLAS COUNTY, ORE.  
✓



LEGEND

- Corner found, 5/8" iron rod unless noted •
- Corner set, 5/8" iron rod with aluminum cap ○
- Corner computed, not set □
- Fence -x-x-
- Storm drain -15" SD-



PROPERTY LINE SURVEY IN THE J. HUNTLEY D.L.C.  
NO. 56 & SECS. 13 & 24, T. 27 S., R. 6 W., W. M.

For: Douglas Community Hospital  
Roseburg, Oregon

By: Shaner Engineering, Inc.

November 1, 1976