

FILED ✓  
RECEIVED MLL  
OCT 14 1976  
COUNTY SURVEYOR  
DOUGLAS COUNTY, ORE.  
✓

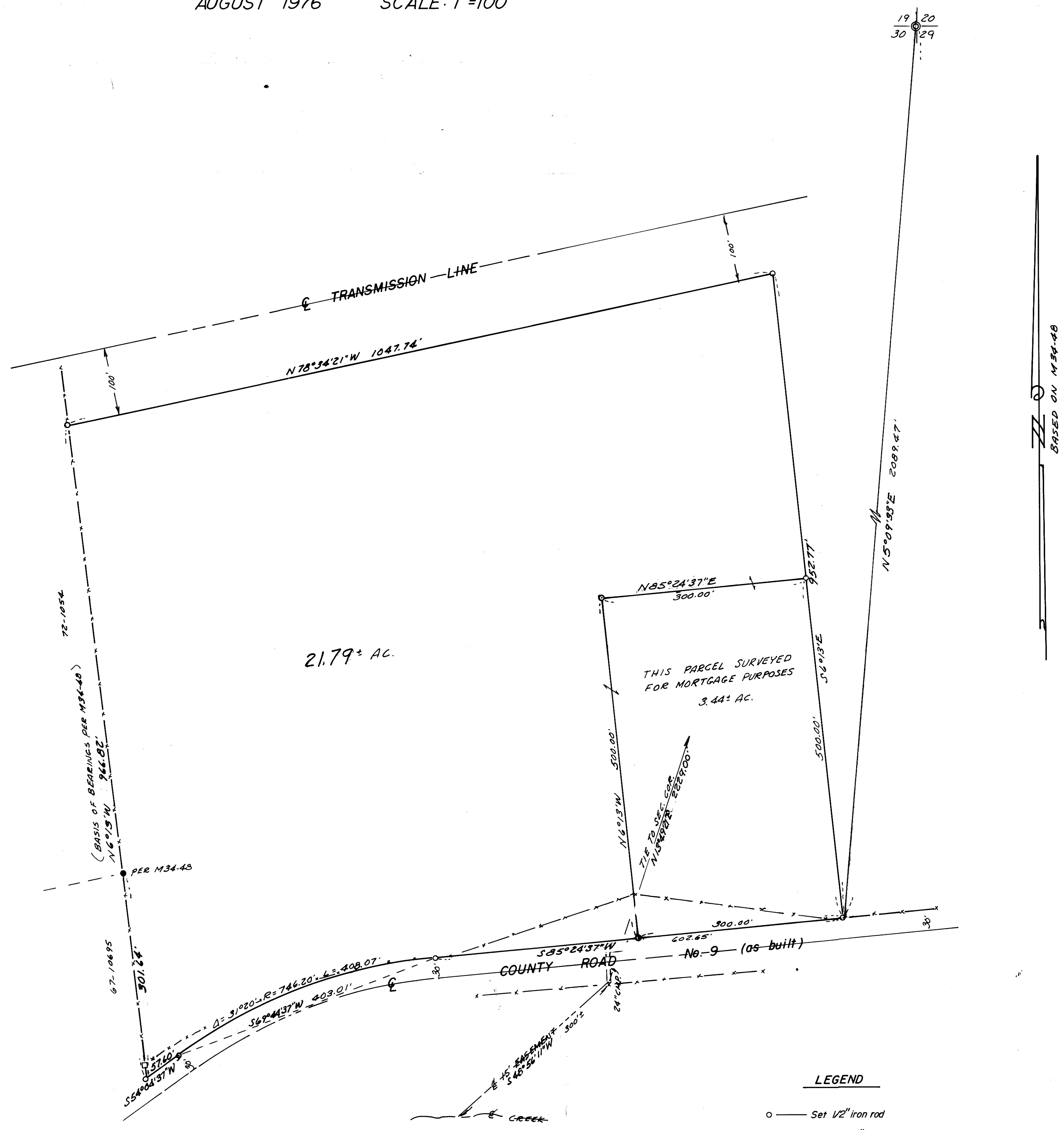
# SURVEY FOR DESCRIPTION

## IN SECTION 30, T.25S.R.6W.W.M.

### FOR: FLOYD ROSS

### BY: BAUGHMAN SURVEYING SERVICE

AUGUST 1976 SCALE: 1"=100'



BASED ON M34-48

#### LEGEND

- — Set 1/2" iron rod
- — Found 5/8" iron rod
- ⊙ — Found Brass cap

REGISTERED  
PROFESSIONAL  
LAND SURVEYOR

*Glenn S. Baughman*

OREGON  
JULY 14 1964  
GLENN S. BAUGHMAN  
535