

SURVEY FOR JOHN ATKINSON ET. AL.  
FOR LAND DIVISION IN SEC. 31, T27S, R5W, W.M.  
SEPT, 1976  
BY HAROLD BALL - C.E. - ROSEBURG

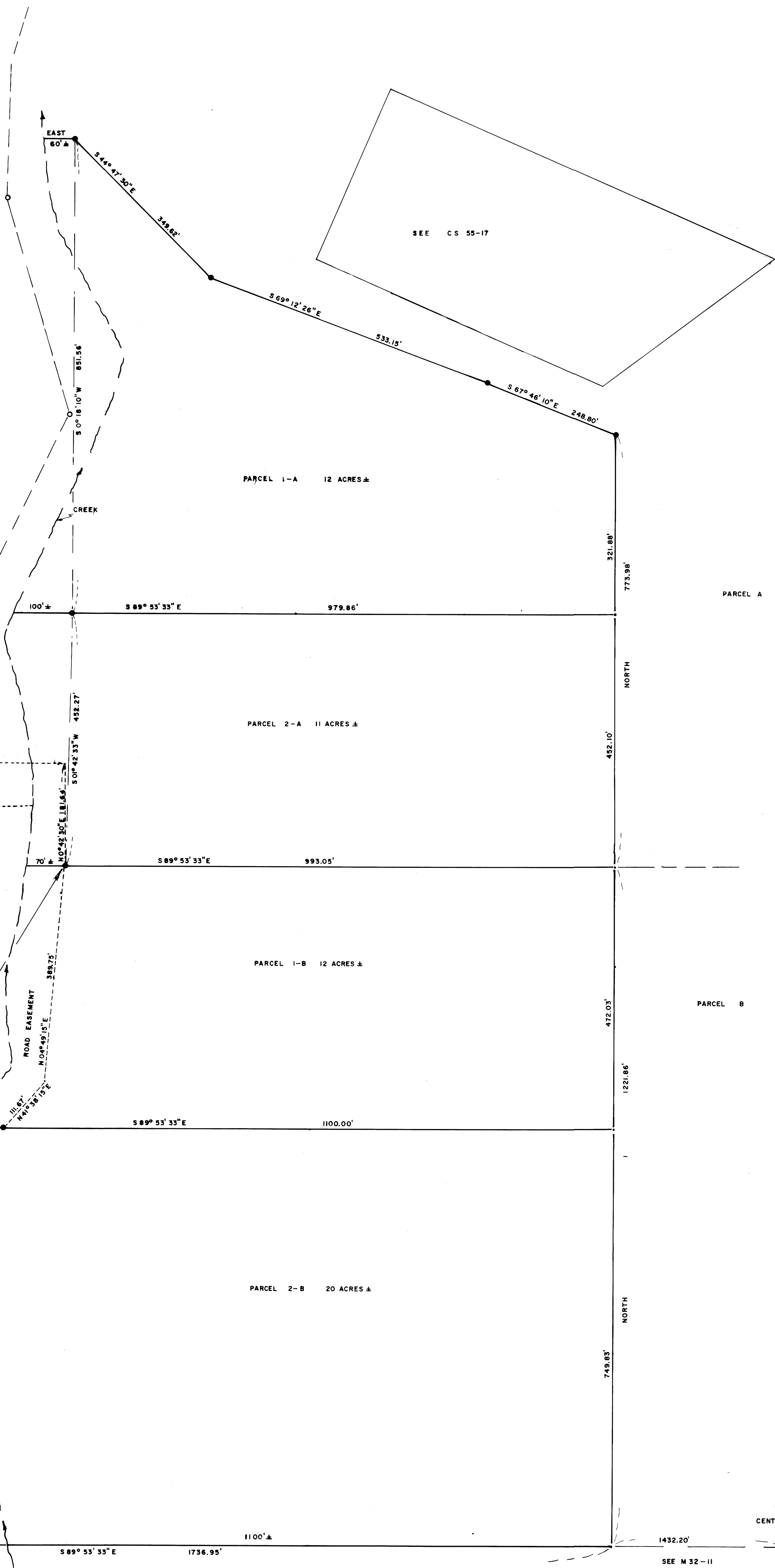


BASIS OF BEARING  
M32-11 AND TIED  
TO 42-50

- SET 5/8" I. ROD
- FD. 3/4" I. ROD



SEE M-32-11



CENTER OF SEC 31, T27S, R5W, WM

MAP FILE M36-53