

COUNTY SURVEYORS FILE DATA  
DO NOT REMOVE FROM OFFICE

FILED  
RECEIVED 27  
AUG 19 1976  
COUNTY SURVEYOR  
DOUGLAS COUNTY, ORE

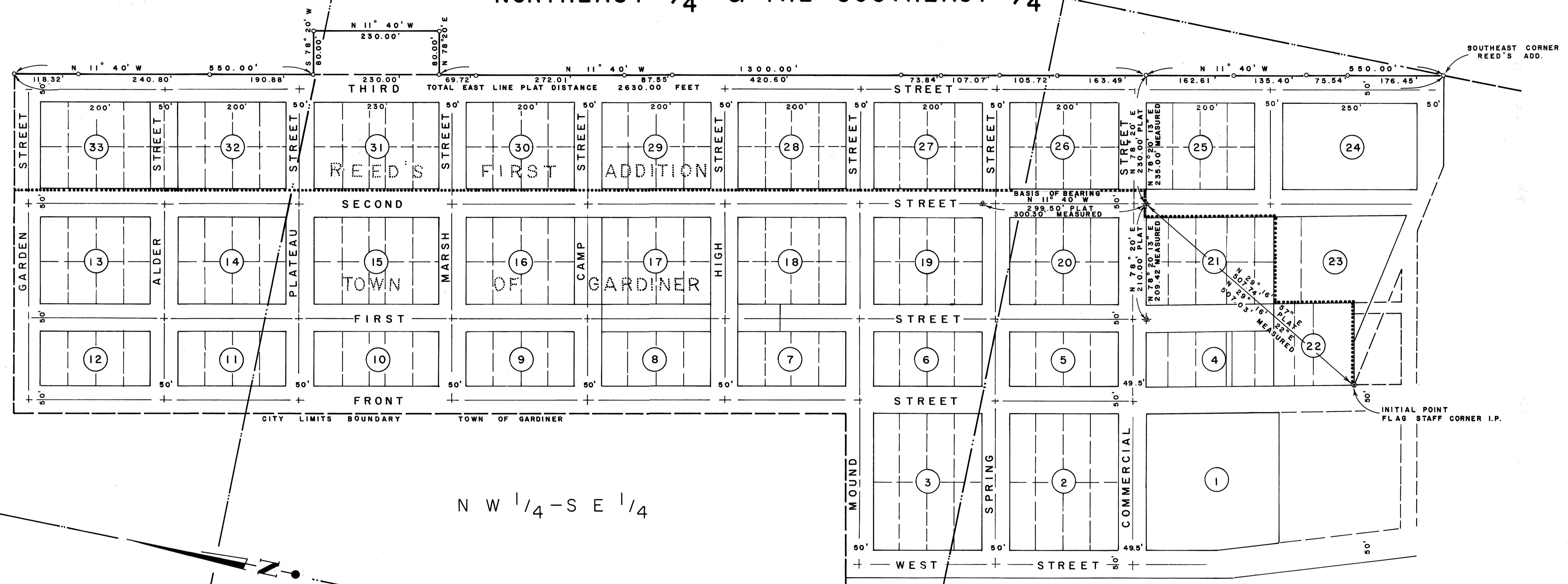
# PROPERTY SURVEY

## TOWN OF GARDINER

### SECTION 22, TOWNSHIP 21 SOUTH, RANGE 12 WEST, DOUGLAS COUNTY, OREGON

#### SURVEY FOR LOCATION - IN THE NORTHEAST 1/4 & THE SOUTHEAST 1/4

SW 1/4 - NE 1/4



NW 1/4 - SE 1/4

SW 1/4 - SE 1/4

SCALE 1" = 100'  
JULY 23, 1976

FOR: INTERNATIONAL PAPER COMPANY  
LONG-BELL DIVISION, GARDINER, OREGON  
PURCHASE ORDER NO. 103-3805

### LEGEND

- ▲ FOUND IRON PIPE MONUMENT
- SET 1" IRON PIPE

REGISTERED  
PROFESSIONAL  
LAND SURVEYOR  
*Robert Wade*  
OREGON  
OCTOBER 4, 1967  
ROBERT W. WADE  
433

COUNTY SURVEYORS FILE DATA  
DO NOT REMOVE FROM OFFICE

IG  
E INC

ENGINEERS - PLANNERS

STRAND-HIGHLAND  
PLANNING-OREGON  
205-1166