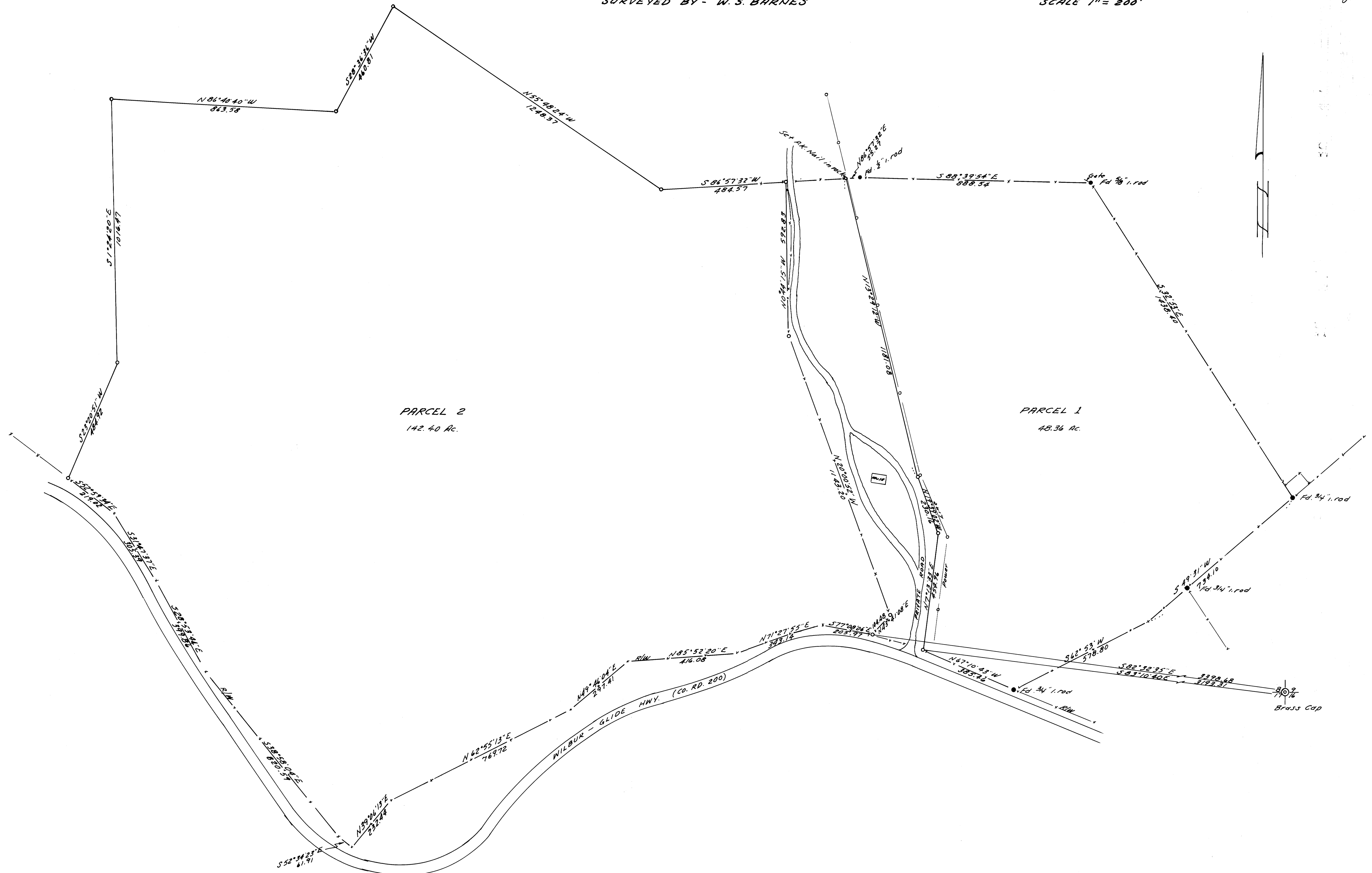


COUNTY SURVEYORS FILE DATA
DO NOT REMOVE FROM OFFICE

FILED
RECEIVED
AUG 16 1976
COUNTY SURVEYOR
DOUGLAS COUNTY, ORE.
✓

SURVEY IN SECTIONS 7, 8, 17 & 18, T 26 S, R 4 W. W. M.
SURVEYED FOR - ROBT PHILLIPS
SURVEYED BY - W. S. BARNES
JULY, 1976
SCALE 1" = 200'



- Denotes monuments found.
- Denotes 5/8" iron rods set.

Base bearing taken from east property line - S32°53'E (See C.S. Map 33-39)

COUNTY SURVEYORS FILE DATA
DO NOT REMOVE FROM OFFICE

