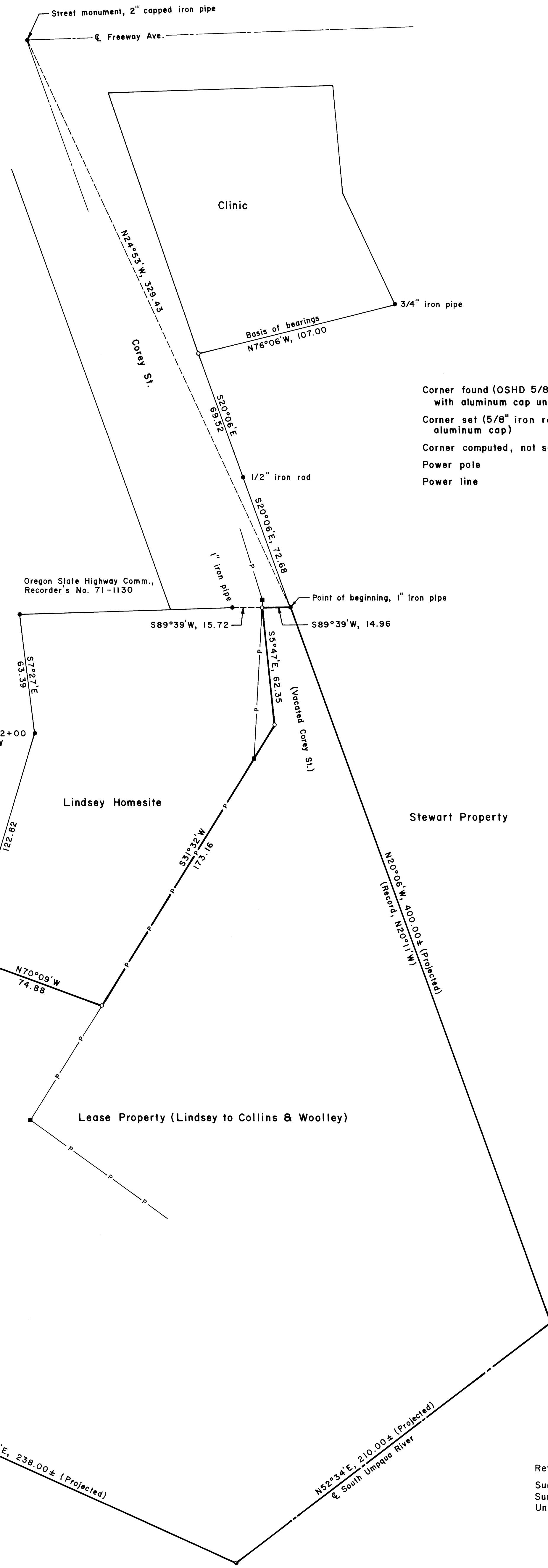
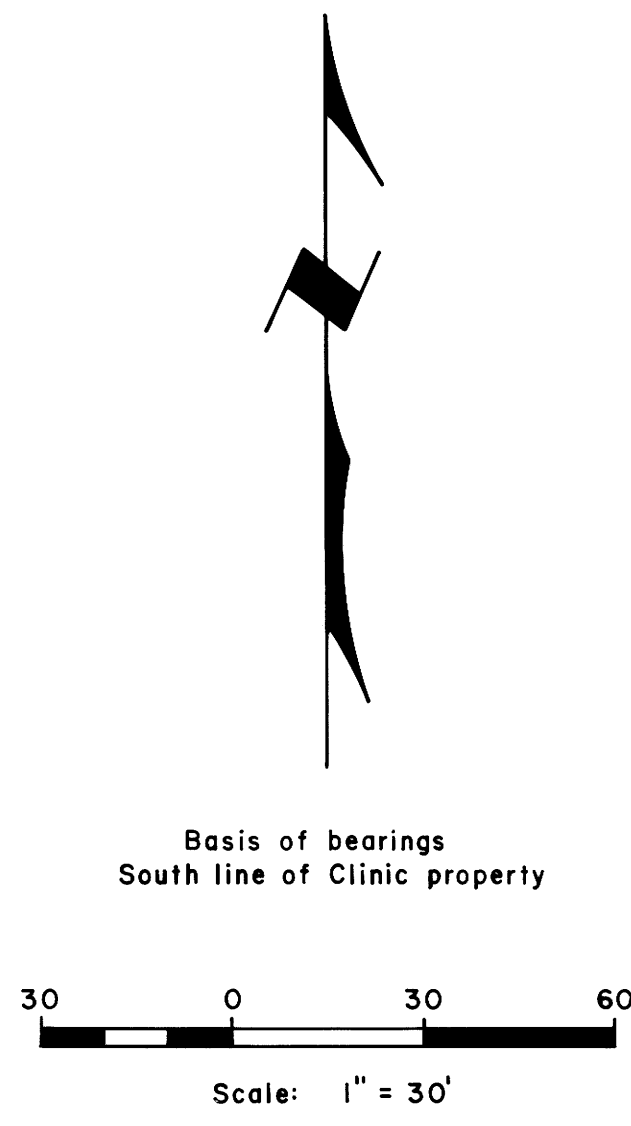


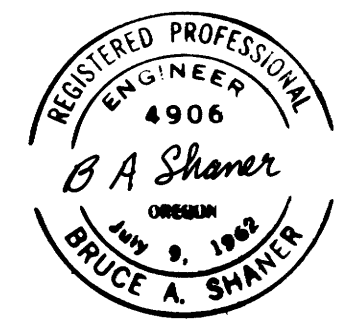
FILED  
RECEIVED *mmc*  
JUL 2 1976  
COUNTY SURVEYOR  
CLATSOP COUNTY, ORE.

MAP FILE 156-58



LEGEND

- Corner found (OSHD 5/8" iron rod with aluminum cap unless noted) •
- Corner set (5/8" iron rod with aluminum cap) ○
- Corner computed, not set ◦
- Power pole ■
- Power line —P—P—



LEASE BOUNDARY SURVEY IN  
NW 1/4 NE 1/4 OF SECTION 24,  
T. 27 S., R. 6 W., W. M.,  
ROSEBURG, OREGON  
For: Collins & Woolley  
By: Shaner Engineering, Inc.  
July 2, 1976

Reference Surveys:  
Survey by Boyer for Fullerton, Aug. 8-10, 1936  
Survey by Byron for Dr. Mooers, Sept. 25, 1964 (M28-72)  
Unrecorded survey by James Daugherty for H. Lindsey

MAP FILE 156-58