

FILED 2  
RECEIVED *Ad*  
JUN 08 1976  
COUNTY SURVEYOR  
DOUGLAS COUNTY, ORE.  
2

SURVEY FOR  
DOUGLAS COUNTY LAND DEPT.  
SEC. 17 T.26 S. R.3 W., W.M.

Surveyed by Douglas County Surveyor's Office  
Francis L. Ingram County Surveyor  
Scale 1" = 30' May 1976

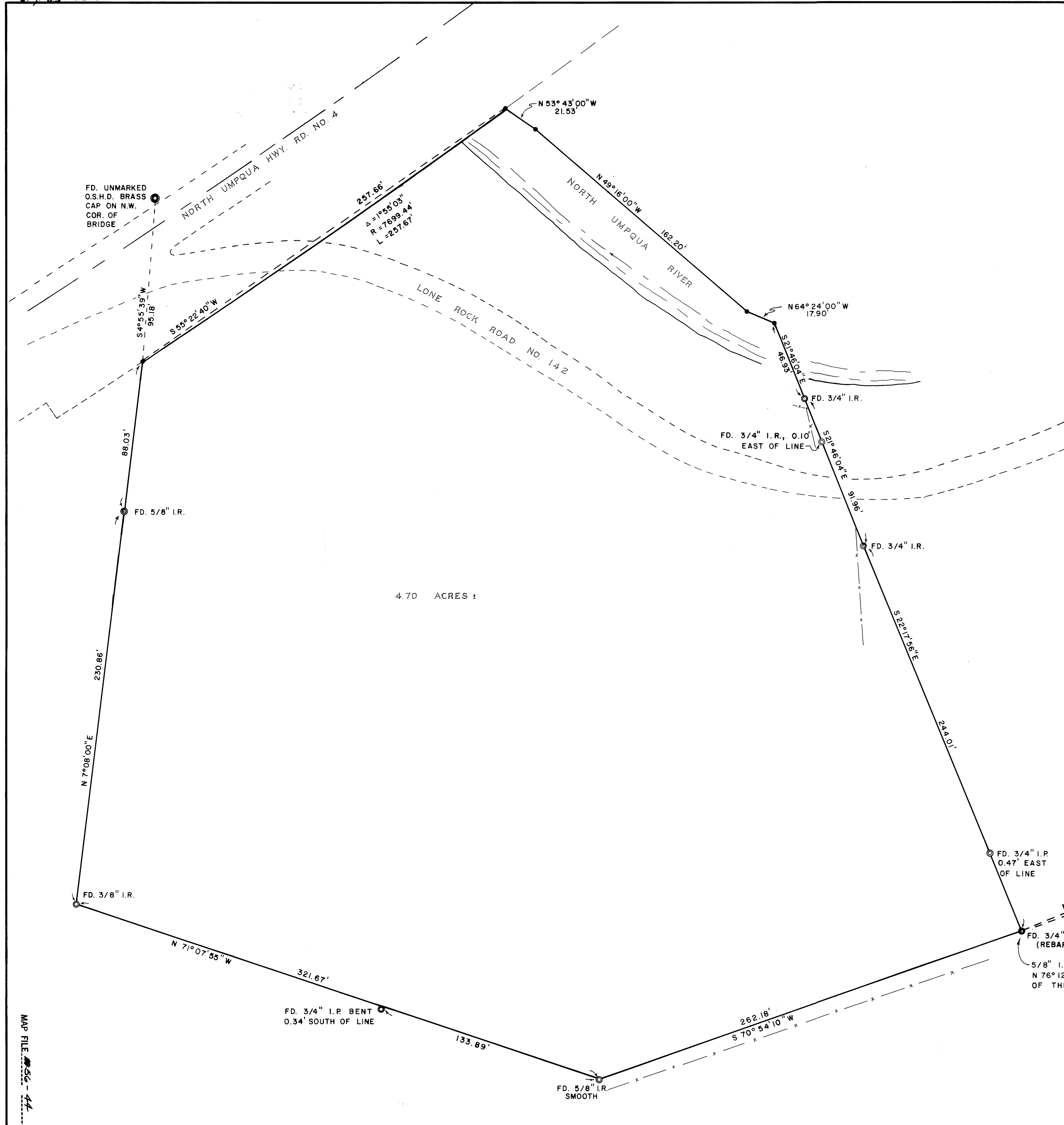
4.70 ACRES ±

REGISTERED  
PROFESSIONAL  
LAND SURVEYOR  
*Francis L. Ingram*  
OREGON  
JULY 11, 1969  
FRANCIS L. INGRAM  
902

LEGEND: ● Fd. Brass Cap  
○ Fd. Monument - as noted  
• Computed - not set

NOTE: Bearings And Distances Shown Are True.  
Survey Based On The Oregon State Plane  
Coordinate System, South Zone, Using  
The Following Control Station

GLIDE	604,997.7	N
	1,307,635.4	E
NU-25	609,529.7	N
	1,315,883.3	E



MAP FILE 56-44

CS FILE NOT SCANNED

SUPPORT DATA FOR SURVEY