

COUNTY SURVEYORS FILE DATA
DO NOT REMOVE FROM OFFICE

RECEIVED JUN 07 1976
COUNTY SURVEYOR
DOUGLAS COUNTY, ORE

FIELD SURVEY of LOT 2, SECTION 19, and part of CARSON D.L.C. N^o 42, T29S, R4W, W.M. for

Ronald Wilson
Suzanne Coffey
Leo Phillips

SURVEYED CONCURRENTLY WITH
SUBDIVISION OF SECTION 19,
COUNTY SURVEYOR FILE N^o M60-35

LEGEND:

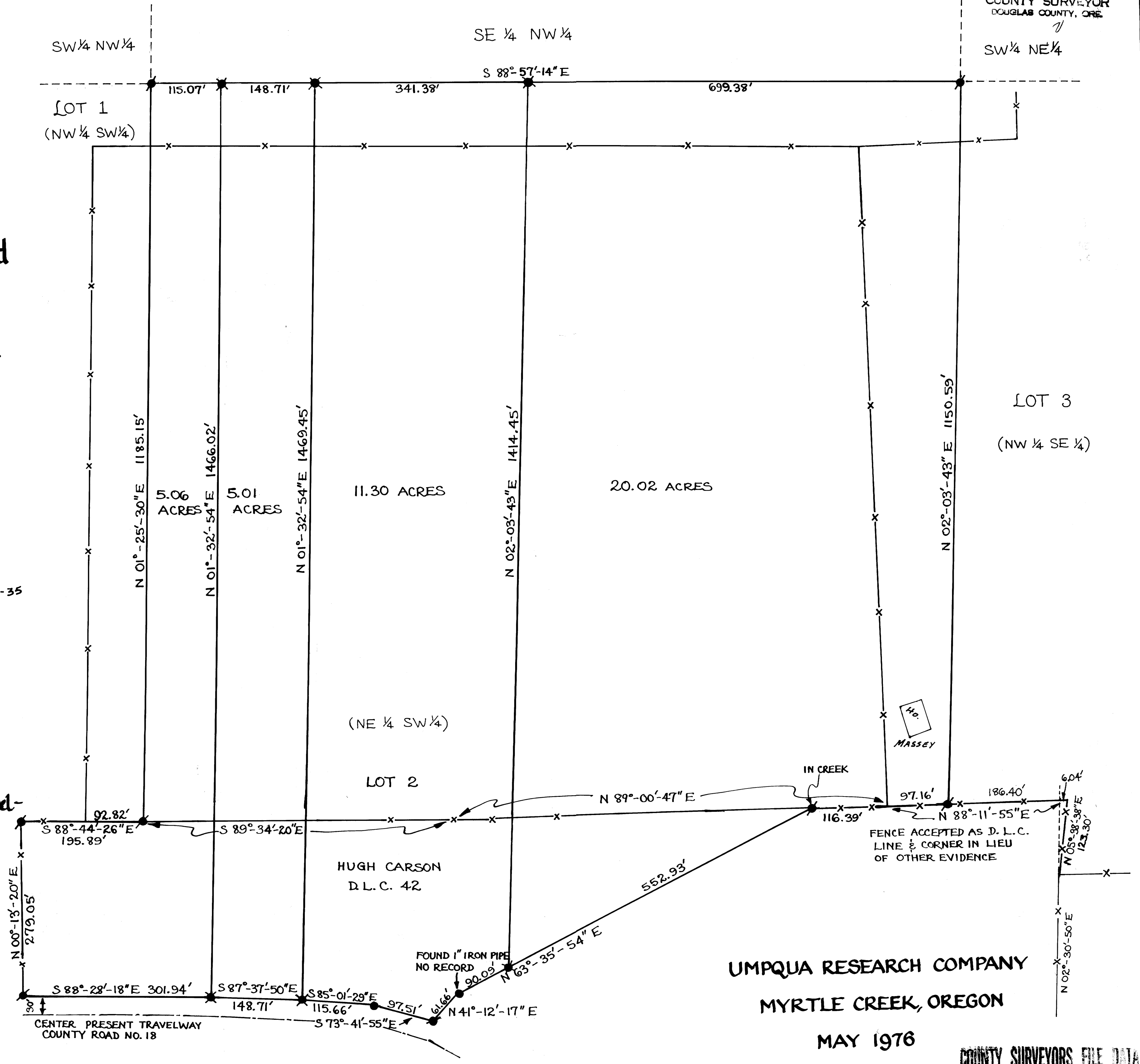
- set 5/8" iron rod
- ✱ set 1/2" iron rod
- point 30 ft from center present travelway, County Road N^o 18

Basis of Bearing:
Solar per File N^o M60-35

SCALE: 1" = 100'

REGISTERED
OREGON
LAND SURVEYOR

W. J. Ruppert
JULY 12, 1968
WILLIAM J. RUPPERT
866



UMPQUA RESEARCH COMPANY
MYRTLE CREEK, OREGON

MAY 1976

COUNTY SURVEYORS FILE DATA
DO NOT REMOVE FROM OFFICE