

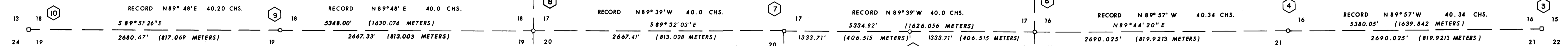
DESCRIPTION OF MONUMENTS AND ACCESSORY TIES

SEE MAP NO. M 58-66
FOR MONUMENT AND
ACCESSORIES DESCRIPTION

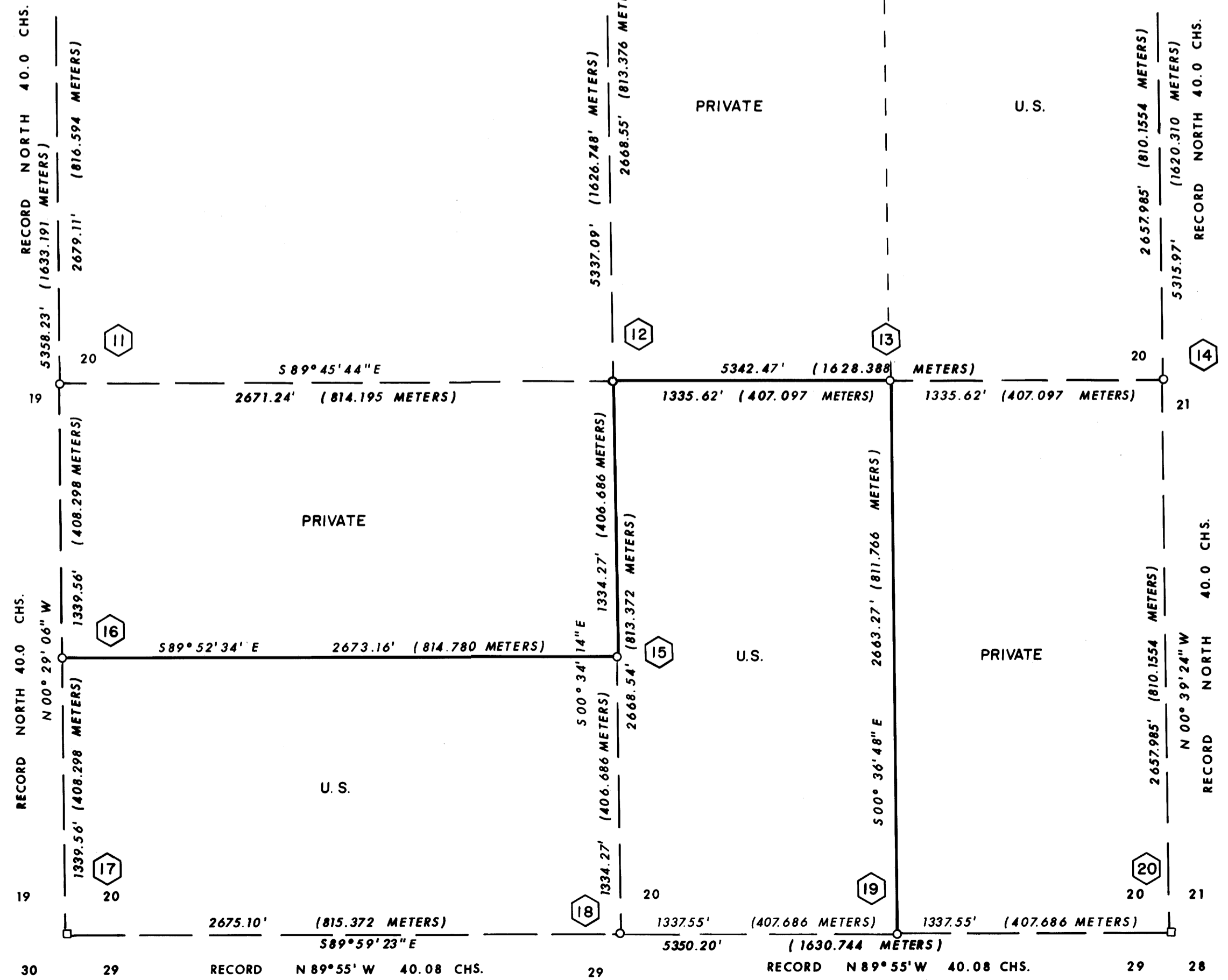
- 1 SET 2" PIPE WITH 3" BRASS DISK TOP STAMPED:
FROM WHICH: A 10" FIR BEARS N 33°00'W 46.7', SCRIBED 1/4 S18 BT.
A 12" FIR BEARS S 75°30'E 40.3', SCRIBED 1/4 S17 BT.
A 24" FIR STUMP, ORIG. B.T., BEARS N 85°E 12.54', OPENED FOR SCRIBE.
- 2 FOUND 1" PIPE WITH 2 1/2" BRASS DISK TOP STAMPED:
FROM WHICH: A 6" DOUGLAS FIR BEARS S 82°W 16.5', SCRIBE VISIBLE
A 8" DOUGLAS FIR BEARS S 43°E 14.8', SCRIBE VISIBLE
A 20" WHITE OAK O.B.T. BEARS S 75°E 16.5', SCRIBE VISIBLE.
- 3 FOUND 1" PIPE WITH 2 1/2" BRASS DISK TOP STAMPED:
FROM WHICH: A 23" WHITE OAK BEARS N 50°W 66.0', O.B.T. OPENED BY COUNTY SURVEYOR.
A 12" DOUGLAS FIR BEARS N 54°W 3.0', SHOWS SCARS
A 11" DOUGLAS FIR BEARS N 56°30'E 10.0', SHOWS SCARS
A 14" DOUGLAS FIR BEARS S 53°E 23.4', SHOWS SCARS.
- 4 SET 2" PIPE WITH 3" BRASS DISK TOP STAMPED:
FROM WHICH: A 18" FIR BEARS S 35°30'E 61.6', SCRIBED 1/4 S21 BT.
A 16" FIR BEARS S 39°W 51.5', SCRIBED 1/4 S21 BT.
- 5 SET 2" PIPE WITH 3" BRASS DISK TOP STAMPED:
FROM WHICH: A 20" CEDAR BEARS N 84°54'E 8.8', SCRIBED E 1/16 S17 BT.
A 14" MAPLE BEARS S 79°25'W 38.8', SCRIBED E 1/16 S20 BT.

- 11 SET 2" PIPE WITH 3" BRASS DISK TOP STAMPED:
FROM WHICH: A 12" FIR BEARS S 88°35'E, 33.5', SCRIBED 1/4 S20 BT.
A 8" FIR BEARS N 53°55'W 13.5', SCRIBED 1/4 S19 BT.
- 12 SET 2" PIPE WITH 3" BRASS DISK TOP STAMPED:
FROM WHICH: A 12" FIR BEARS N 14°39'W 17.3', SCRIBED C 1/4 S20 BT.
A 8" FIR BEARS N 79°12'E 6.0', SCRIBED C 1/4 S20 BT.
- 13 SET 2" PIPE WITH 3" BRASS DISK TOP STAMPED:
FROM WHICH: A 8" FIR BEARS N 56°02'E 26.9', SCRIBED CE 1/16 S20 BT.
A 16" FIR BEARS S 03°01' 15.4', SCRIBED CE 1/16 S20 BT.
- 14 SET 2" PIPE WITH 3" BRASS DISK TOP STAMPED:
FROM WHICH: A 8" FIR BEARS S 72°30'W 43.5', SCRIBED 1/4 S20 BT.
A 8" FIR BEARS S 57°45'E 27.8', SCRIBED 1/4 S21 BT.
- 15 SET 2" PIPE WITH 3" BRASS DISK TOP STAMPED:
FROM WHICH: A 8" FIR BEARS S 81°50'E 16.7', SCRIBED CS 1/16 S20 BT.
A 8" FIR BEARS S 80°10'W 42.7', SCRIBED CS 1/16 S20 BT.

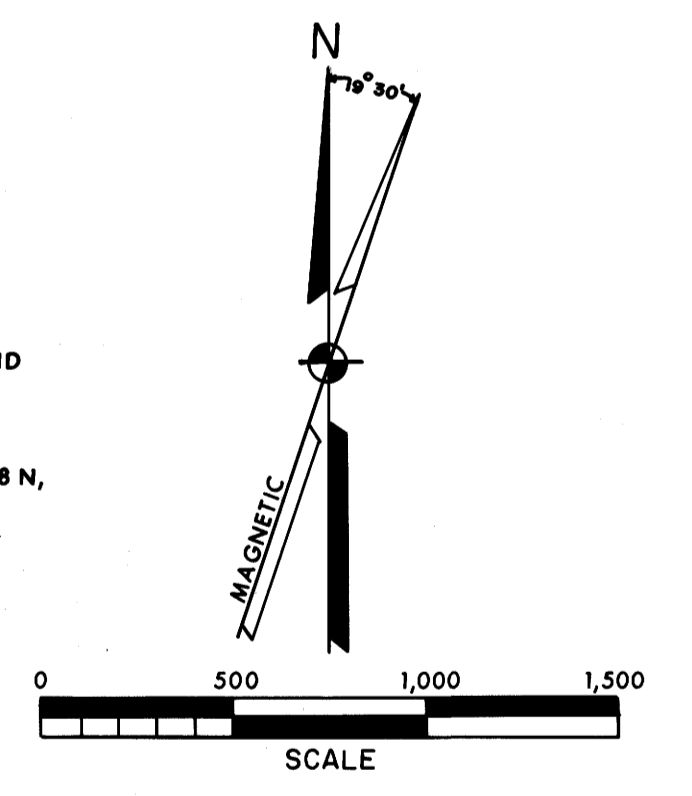
- 16 SET 2" PIPE WITH 3" BRASS DISK TOP STAMPED:
FROM WHICH: A 15" FIR BEARS N 53°58'W 5.2', SCRIBED S1/16 S19 BT.
A 8" FIR BEARS S 87°12'E 46.9', SCRIBED S1/16 S20 BT.
- 17 FOUND 1" PIPE WITH 2 1/2" BRASS DISK TOP STAMPED:
FROM WHICH: A 4" DEAD FIR O.B.T. BEARS S 47°E 23.1', BT. SCRIBE VISIBLE
A 23" DEAD FIR O.B.T. BEARS S 89°W 7.9', SCRIBE VISIBLE
A 4" FIR BEARS N 15°W 28.8', SHOWS SCARS
A 24" FIR BEARS N 15°30'E 26.5', SCRIBE VISIBLE
A 12" FIR BEARS S 33°E 33.4', SCRIBE VISIBLE
A 36" FIR BEARS S 45°W 44.9', SCRIBE VISIBLE
- 18 SET 2" PIPE WITH 3" BRASS DISK TOP STAMPED:
FROM WHICH: A 9" HEMLOCK BEARS N 41°W 47.3', SCRIBED 1/4 S20 BT.
A 12" FIR BEARS S 39°E 38.7', SCRIBED 1/4 S29 BT.
- 19 SET 2" PIPE WITH 3" BRASS DISK TOP STAMPED:
FROM WHICH: A 10" FIR BEARS S 38°W 41.9', SCRIBED E 1/16 S29 BT.
A 8" FIR BEARS N 62°45'W 23.2', SCRIBED E 1/16 S20 BT.
- 20 FOUND 1" PIPE WITH 2 1/2" BRASS DISK TOP STAMPED:
FROM WHICH: A 30" DEAD FIR O.B.T. BEARS N 60°W 21.8', SCRIBE VISIBLE
A 12" DEAD CEDAR O.B.T. BEARS S 2°E 50.8', BURNT OUT.
A 18" CEDAR BEARS S 3°30'E 72.2', SCRIBE VISIBLE
A 20" CEDAR BEARS S 53°W 39.5', SCRIBE VISIBLE
A 34" FIR BEARS N 81°W 68.0', SCRIBE VISIBLE
A 10" MADRONE BEARS N 79°E 25.6', SCRIBE VISIBLE



- 6 SET 2" PIPE WITH 3" BRASS DISK TOP STAMPED:
FROM WHICH: A 20" FIR BEARS N 69°45'W 44.6', SCRIBED T30S. RIW. S17 BT.
A 36" TWIN CEDAR BEARS N 72°30'E, 33.9', SCRIBED T30S. RIW. S16 BT.
A 36" CEDAR BEARS S 22°30'E 29.6', SCRIBED T30S. RIW. S21 BT.
A 20" FIR BEARS S 65°30'W 67.3', SCRIBED T30S. RIW. S20 BT.
- 7 SET 2" PIPE WITH 3" BRASS DISK TOP STAMPED:
FROM WHICH: A 10" FIR BEARS S 82°00'E 31.3', SCRIBED 1/4 S20 BT.
A 12" FIR BEARS S 03°39'E 38.7', SCRIBED 1/4 S20 BT.
- 8 SET 2" PIPE WITH 3" BRASS DISK TOP STAMPED:
FROM WHICH: A 14" FIR BEARS N 78°05'E 47.1', SCRIBED T30S. RIW. S17 BT.
A 24" PINE BEARS S 21°31'E 97.0', SCRIBED T30S. RIW. S20 BT.
A 10" FIR BEARS S 44°42'W 97.1', SCRIBED T30S. RIW. S19 BT.
A 10" MADRONE BEARS N 26°37' 28.8', SCRIBED T30S. RIW. S18 BT.
- 9 SET 2" PIPE WITH 3" BRASS DISK TOP STAMPED:
FROM WHICH: A 8" FIR BEARS N 26°08'E 16.4', SCRIBED 1/4 S18 BT.
A 8" CHINQUAPIN BEARS S 65°28'W 39.2', SCRIBED 1/4 S19 BT.
- 10 FOUND 1" PIPE WITH 2 1/2" BRASS DISK TOP STAMPED:
FROM WHICH: A 24" FIR BEARS N 56°E 20.0', BARK SCRIBE VISIBLE
A 20" FIR BEARS S 53°30'E 14.8', BARK SCRIBE VISIBLE
A 18" FIR BEARS S 79°30'W 19.4', BARK SCRIBE VISIBLE
A 24" FIR BEARS N 62°30'W 48.2', BARK SCRIBE VISIBLE



LEGEND:
 □ = FOUND MONUMENT AS SHOWN.
 ○ = SET MONUMENT AS SHOWN.
 — = TRUE LINE POSTED WITH STEEL FENCE POSTS AND GOVERNMENT PROPERTY SIGNS.
 BASIS OF BEARINGS: POLARIS OBSERVATION.
 FIELD BOOKS REFERENCED UNDER CONTRACT NO. 004938 N, FIELD BOOKS 11, 12, 13, & 14.



I, LARRY J. FRIAR, A REGISTERED LAND SURVEYOR IN THE STATE OF OREGON, HEREBY CERTIFY THAT THIS PLAT AND THE NOTES HEREON ARE A CORRECT REPRESENTATION OF A SURVEY I PERFORMED DURING FEBRUARY, 1976, FOR THE U.S. FOREST SERVICE, IN ACCORDANCE WITH THE STATUTES OF THE STATE OF OREGON AND THE ARTICLES OF MY CONTRACT.

REGISTERED
 LAND SURVEYOR
 LARRY J. FRIAR
 917 E 6th St
 July 16, 1971
 LARRY J. FRIAR
 917

Larry J. Friar
 LARRY J. FRIAR
 REGISTERED LAND SURVEYOR NO. 961

PLAT OF SURVEY
 FOR
 THE UNITED STATES DEPARTMENT OF AGRICULTURE
UMPQUA NATIONAL FOREST
 CONTRACT NO. 004938N
 BEING SECTION 20, T30S, R1 W, WM,
 DOUGLAS CO. SCALE: 1"=500'
 OREGON FEBRUARY, 1976
 TILLER LAND SURVEY NO. 18
 PREPARED BY
 FRIAR-MOFFIT SURVEYING CO.
 MEDFORD, OREGON