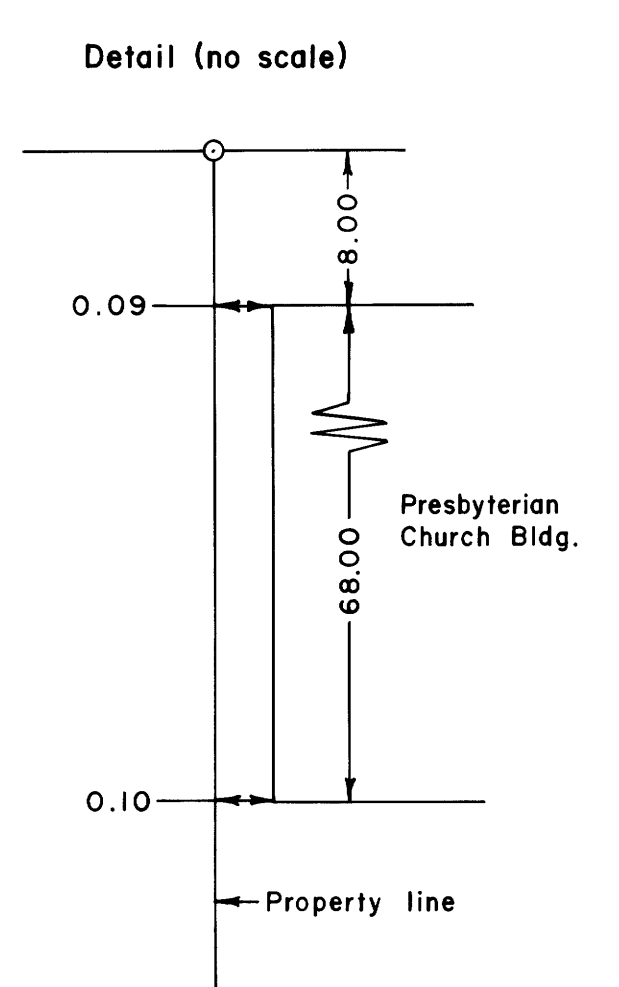
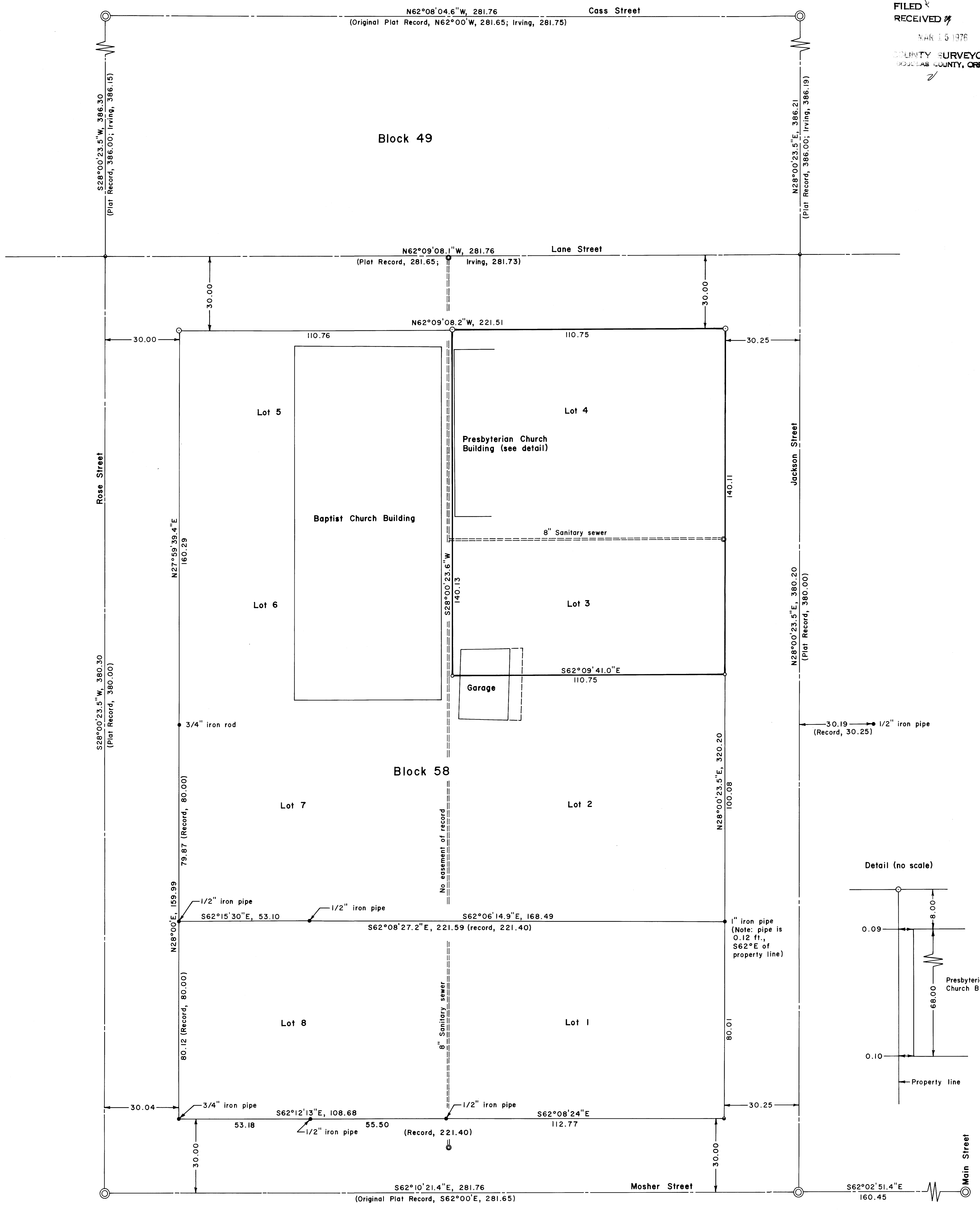


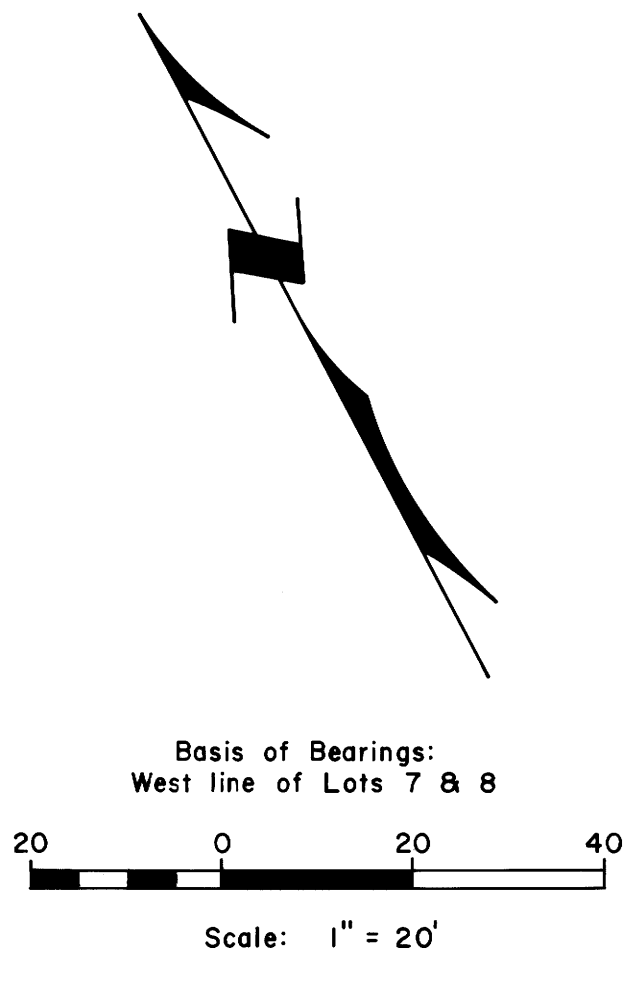
FILED  
RECEIVED  
MAR 15 1976  
COUNTY SURVEYOR  
DOUGLAS COUNTY, ORE.

MAP FILE M-52 - 36



- LEGEND**
- Standard street monument
  - Brass disc set (1 1/4")
  - Corner found (as noted)
  - Corner set (5/8" iron rod with aluminum cap)
  - Corner computed (not set)
  - Sanitary sewer manhole
  - Property line

Note:  
See original Plat of Roseburg & survey by Irving, County Surveyor Map File M7-74.



**PROPERTY LINE SURVEY IN BLOCK 58,  
CITY OF ROSEBURG, OREGON, IN THE  
NW 1/4 SW 1/4 SEC. 19, T. 27 S., R. 5 W., W. M.**  
For: First Presbyterian Church,  
Roseburg, Oregon  
By: Shaner Engineering, Inc.

March 13, 1976



MAP FILE M-52 - 36