

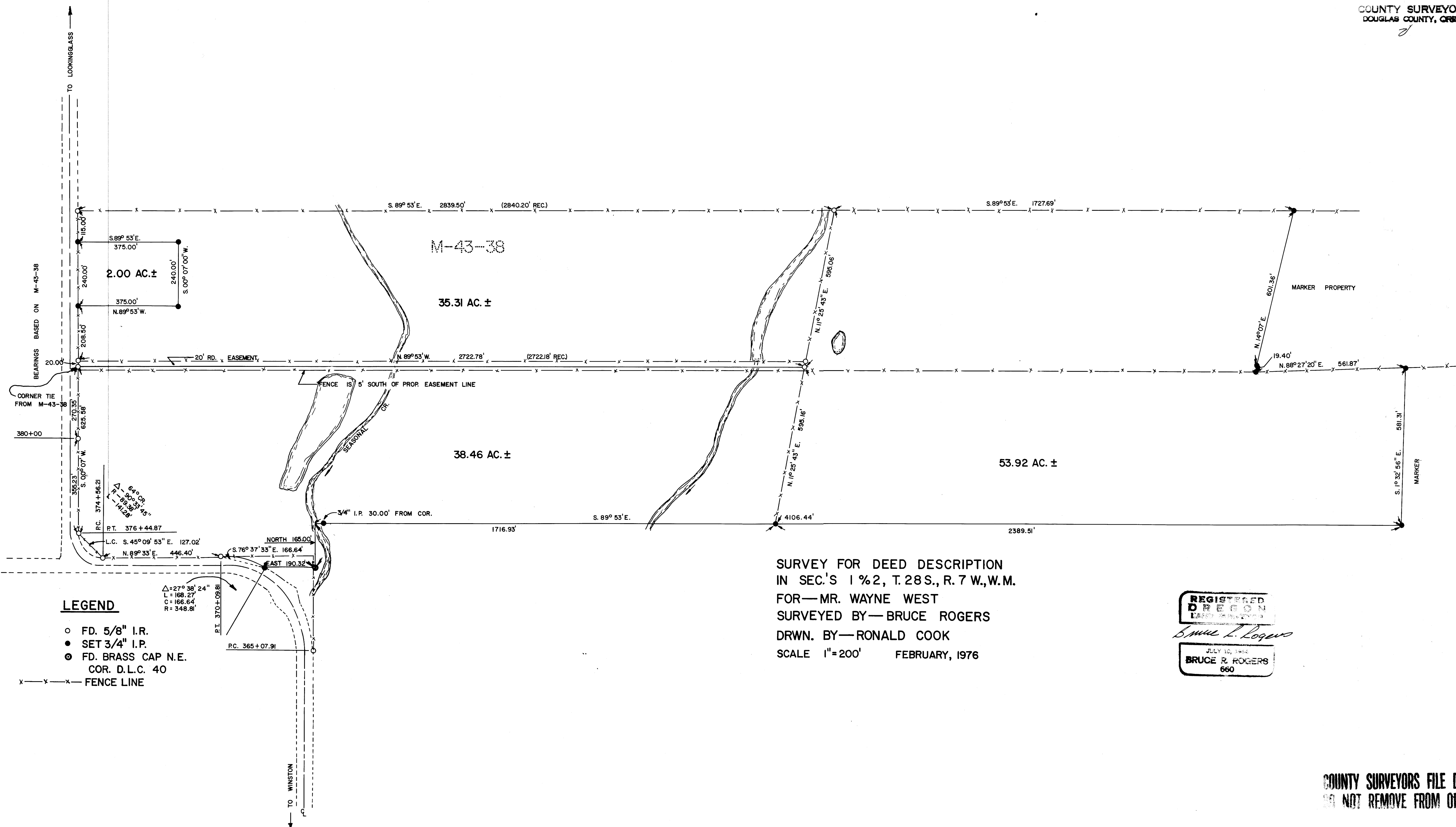
COUNTY SURVEYORS FILE DATA  
DO NOT REMOVE FROM OFFICE

FILED *mg*  
RECEIVED *mg*

FEB 13 1976

COUNTY SURVEYOR  
DOUGLAS COUNTY, ORE.

MAP FILE 11-50-38



**LEGEND**

- FD. 5/8" I.R.
- SET 3/4" I.P.
- ⊙ FD. BRASS CAP N.E.  
COR. D.L.C. 40
- x-x-x-x FENCE LINE

SURVEY FOR DEED DESCRIPTION  
IN SEC.'S 1 & 2, T. 28 S., R. 7 W., W.M.  
FOR—MR. WAYNE WEST  
SURVEYED BY—BRUCE ROGERS  
DRWN. BY—RONALD COOK  
SCALE 1"=200' FEBRUARY, 1976

REGISTERED  
OREGON  
LAND SURVEYOR  
*Bruce L. Rogers*  
JULY 10, 1952  
BRUCE R. ROGERS  
660

COUNTY SURVEYORS FILE DATA  
DO NOT REMOVE FROM OFFICE

MAP FILE