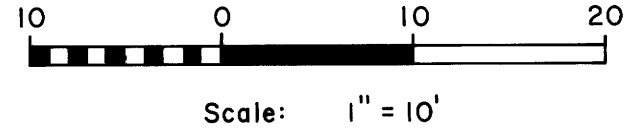
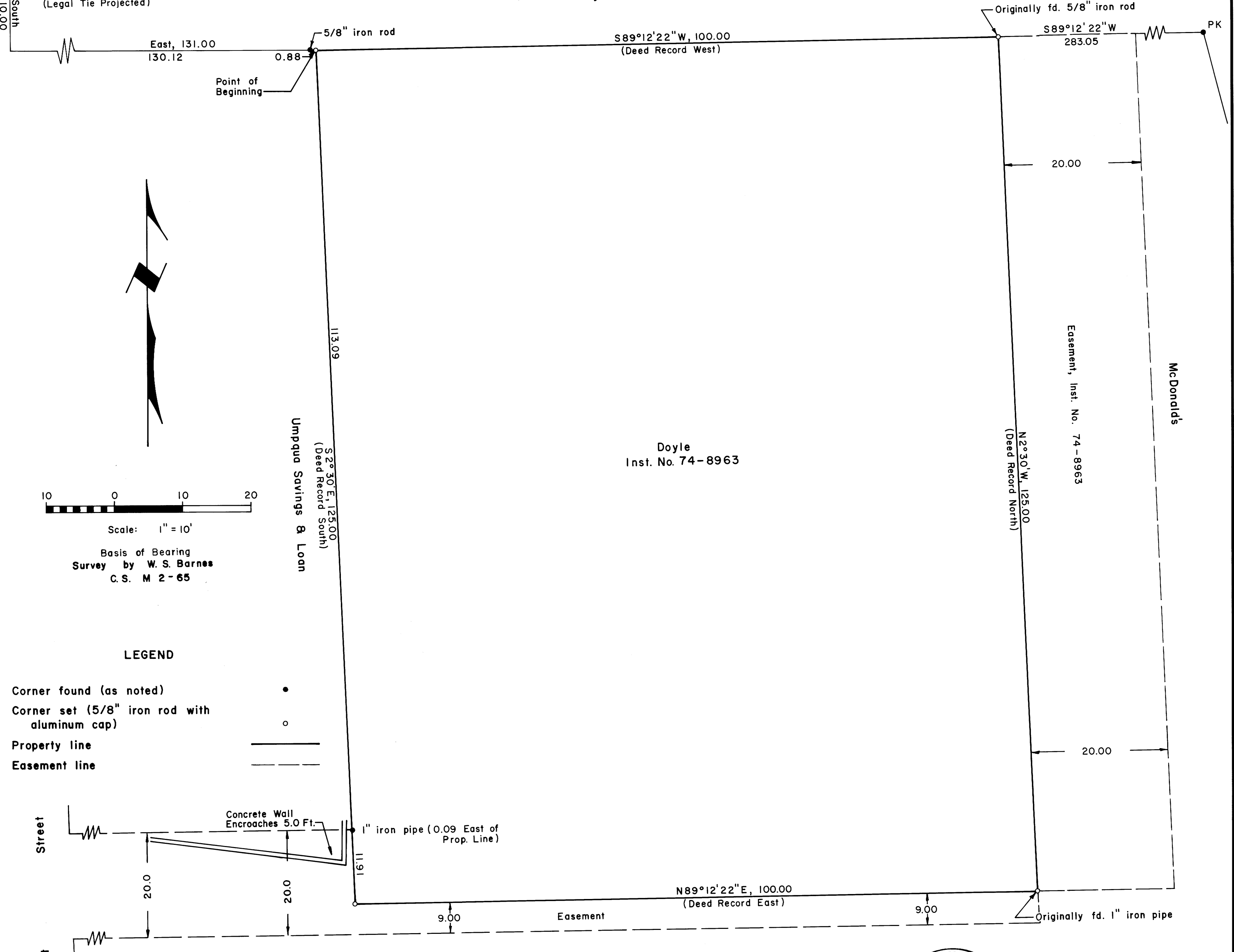


FILED
RECEIVED *Mg*
NOV 3 1975

COUNTY SURVEYOR
DOUGLAS COUNTY, OREGON

Garden Valley Blvd.

NW Cor. Block 23
Riverside Addition
City of Roseburg
(Legal Tie Projected)



Basis of Bearing
Survey by W. S. Barnes
C. S. M 2-65

LEGEND

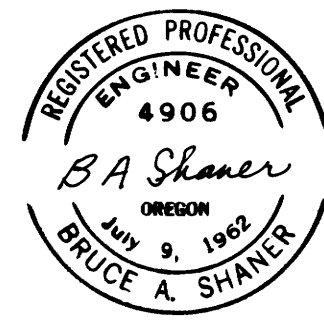
- Corner found (as noted) •
- Corner set (5/8" iron rod with aluminum cap) ○
- Property line ———
- Easement line - - - - -

PROPERTY LINE SURVEY IN SEC. 13, T. 27 S., R. 6 W., W. M.

City of Roseburg

For: Western States Farms and Ranches

By: Shaner Engineering, Inc.



Nov. 3, 1975