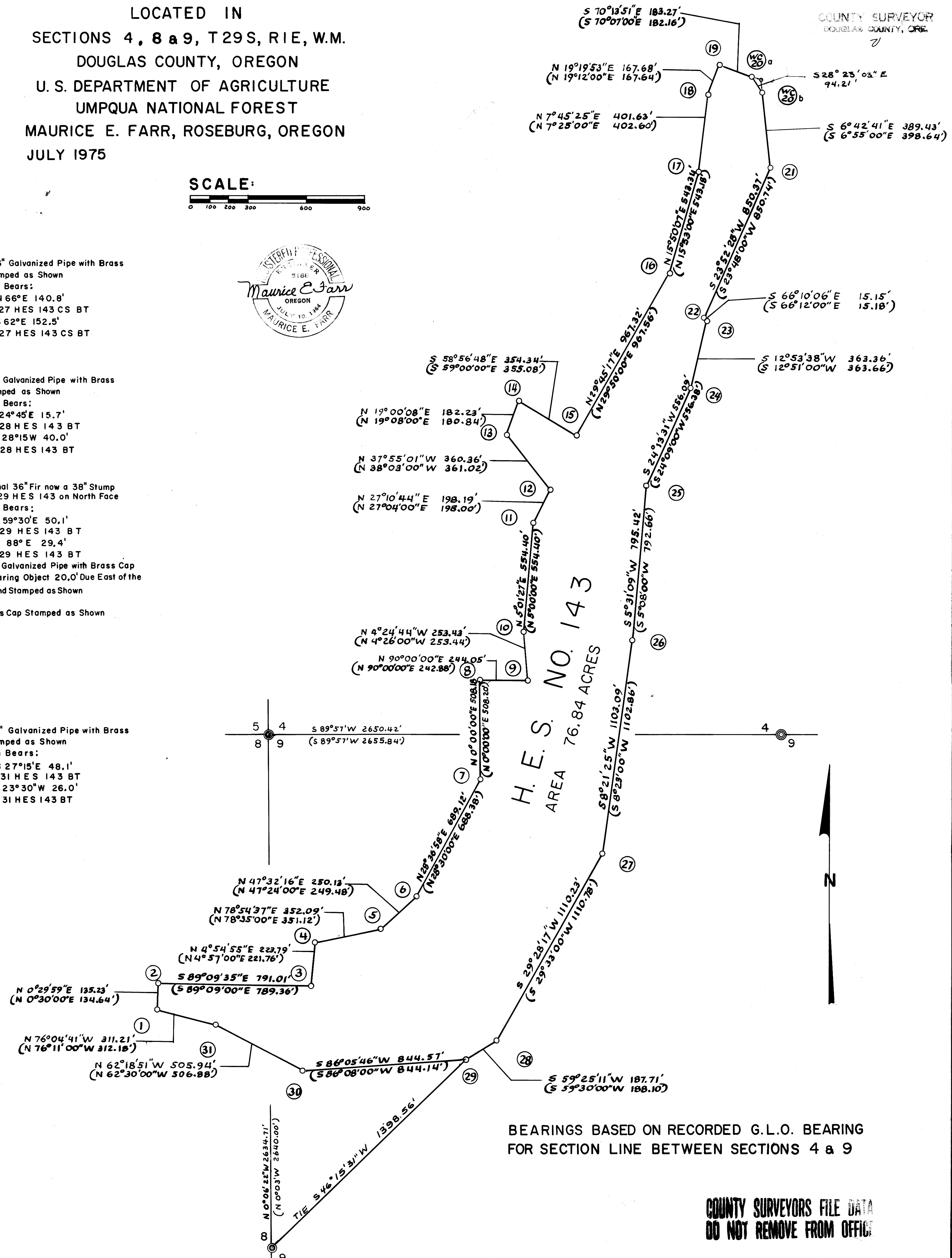
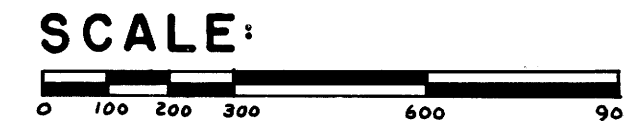


COUNTY SURVEYORS FILE DATA
DO NOT REMOVE FROM OFFICE

PLAT OF SURVEY OF H.E.S. 143
LOCATED IN
SECTIONS 4, 8 & 9, T29S, R1E, W.M.
DOUGLAS COUNTY, OREGON
U. S. DEPARTMENT OF AGRICULTURE
UMPQUA NATIONAL FOREST
MAURICE E. FARR, ROSEBURG, OREGON
JULY 1975

FILED 1105
RECEIVED
COUNTY SURVEYOR
DOUGLAS COUNTY, ORE.
7

- 1. Set 1" x 36" Galvanized Pipe with Brass Cap Stamped as Shown From which Bears: A 9" Hemlock S 6°E 8.8' Scriber 1 HES 143 BT A 16" Hemlock S 80°W 66.3' Scriber 1 HES 143 BT
- 2. Found 1" Galvanized Pipe with Brass Cap Stamped as Shown From which Bears: A 20" Cedar N 80°E 109.6' Scriber 2 HES 143 CS BT
- 3. Set 1" x 36" Galvanized Pipe with Brass Cap Stamped as Shown From which Bears: A 14" Cedar N 64°30'W 146.8' Scriber 3 HES 143 BT A 20" Fir N 17°15'W 117.9' Scriber 3 HES 143 BT
- 4. Found 24" Fir with the 2 Original Witness Corner Stones out of Place Two Bearing Trees were Established as Follows: A 10" Cedar N 25°45'E 27.2' Scriber 4 HES 143 BT A 7" Fir S 35°W 95.6' Scriber 4 HES 143 BT
- 5. Found Original Corner Stone in Place with Visible Scribe HES 143 on SE Face Set 1" x 36" Galvanized Pipe with Brass Cap Stamped as Shown. The Original Corner Stone is Buried Along the NW Side of Pipe. From which Bears: A 27" Fir N 87°W 121.1' Scriber 5 HES 143 BT A 8" Fir N 5°15'E 77.6' Scriber 5 HES 143 BT
- 6. Set 1" x 36" Galvanized Pipe with Brass Cap Stamped as Shown From which Bears: A 13" Fir N 62°30'E 17.3' Scriber 6 HES 143 BT A 7" Cedar S 62°W 90.0' Scriber 6 HES 143 BT
- 7. Set 1" x 36" Galvanized Pipe with Brass Cap Stamped as Shown From which Bears: A 16" Cedar N 75°W 106.9' Scriber 7 HES 143 BT A 24" Cedar N 51°45'W 102.4' Scriber 7 HES 143 BT
- 8. Set 1" x 36" Galvanized Pipe with Brass Cap Stamped as Shown From which Bears: A 9" Fir S 30°30'W 44.6' Scriber 8 HES 143 BT A 23" Maple S 85°45'W 52.7' Scriber 8 HES 143 BT
- 9. Set 1" x 36" Galvanized Pipe with Brass Cap Stamped as Shown From which Bears: A 10" Fir N 84°30'W 188.1' Scriber 9 HES 143 BT A 17" Cedar N 20°W 157.3' Scriber 9 HES 143 BT
- 10. Set 1" x 36" Galvanized Pipe with Brass Cap Stamped as Shown From which Bears: A 22" Cedar S 47°30'W 103.8' Scriber 10 HES 143 BT A 16" Cedar S 86°30'W 217.3' Scriber 10 HES 143 BT
- 11. Set 1" x 36" Galvanized Pipe with Brass Cap Stamped as Shown From which Bears: A 8" Hemlock N 71°45'W 33.3' Scriber 11 HES 143 BT A 6" Fir N 29°W 42.5' Scriber 11 HES 143 BT
- 12. Set 1" x 36" Galvanized Pipe with Brass Cap Stamped as Shown From which Bears: A 6" Fir S 49°W 55.3' Scriber 12 HES 143 BT A 12" Maple N 85°30'W 12.9' Scriber 12 HES 143 BT
- 13. Found Brass Cap Stamped as Shown From which Bears: A 7" Fir N 59°W 43.8' Scriber Visible A 10" Maple N 84°E 51.6' Scriber Visible
- 14. Found Brass Cap Stamped as Shown From which Bears: A 18" Cedar N 70°E 54.2' Scriber Visible
- 15. Set 1" x 36" Galvanized Pipe with Brass Cap Stamped as Shown From which Bears: A 14" Pine N 26°W 213.5' Scriber 15 HES 143 BT A 5" Fir N 16°45'E 96.2' Scriber 15 HES 143 BT
- 16. Set 1" x 36" Galvanized Pipe with Brass Cap Stamped as Shown From which Bears: A 6" Maple S 62°45'W 109.4' Scriber 16 HES 143 BT A 6" Fir N 15°30'W 83.6' Scriber 16 HES 143 BT
- 17. Found Brass Cap Stamped as Shown From which Bears: A 13" Fir S 36°30'W 99.0' Scriber 17 HES 143 BT A 14" Fir N 5°W 145.6' Scriber 17 HES 143 BT
- 18. Found Brass Cap Stamped as Shown From which Bears: A 17" Fir N 25°W 74.3' Scriber 18 HES 143 BT
- 19. Set 1" x 36" Galvanized Pipe with Brass Cap Stamped as Shown From which Bears: A 16" Fir S 66°W 60.9' Scriber 19 HES 143 BT A 6" Fir N 26°45'W 44.4' Scriber 19 HES 143 BT
- 20. Found Brass Cap Stamped as Shown
- 21. Found Brass Cap Stamped as Shown From which Bears: A 9" Fir S 47°E 33.4' Scriber Visible A 8" Fir N 5°E 33.3' Scriber 21 HES 143 CS BT
- 22. Set 1" x 36" Galvanized Pipe with Brass Cap Stamped as Shown From which Bears: A 9" Fir S 34°W 29.8' Scriber 22 & 23 HES 143 BT A 13" Fir N 68°30'E 25.0' Scriber 22 & 23 HES 143 BT Bearing Trees Reference Only Bearing Object is 53.2' S 66°10'E from Corner 22
- 23. Set 1" x 36" Galvanized Pipe with Brass Cap Stamped as Shown From which Bears: A 9" Fir S 34°W 29.8' Scriber 23 HES 143 BT A 13" Fir N 68°30'E 25.0' Scriber 23 HES 143 BT Bearing Trees Reference Only Bearing Object is 38.0' S 66°10'E from Corner 23
- 24. Found Original Corner Stone out of Place Set 1" x 36" Galvanized Pipe with Brass Cap Stamped as Shown From which Bears: A 13" Hemlock S 38°15'E 43.0' Scriber 24 HES 143 BT A 7" Hemlock N 56°15'E 55.8' Scriber 24 HES 143 BT
- 25. Found Brass Cap Stamped as Shown From which Bears: A 17" Fir N 2°E 48.8' Scriber 25 HES 143 CS BT
- 26. Found Stump of Original 26", now 32" Fir Corner Tree From which Bears: A 9" Maple S 43°E 21.5' Scriber 26 HES 143 CS BT A 16" Fir N 52°E 15.2' Scriber 26 HES 143 CS BT Found a Brass Cap on 1" Pipe Stamped as Shown Brass Cap is 2' West of Center of Corner Stump
- 27. Set 1" x 36" Galvanized Pipe with Brass Cap Stamped as Shown From which Bears: A 13" Fir N 66°E 140.8' Scriber 27 HES 143 CS BT A 18" Fir S 62°E 152.5' Scriber 27 HES 143 CS BT
- 28. Set 1" x 36" Galvanized Pipe with Brass Cap Stamped as Shown From which Bears: A 5" Fir S 24°45'E 15.7' Scriber 28 HES 143 BT A 6" Fir S 28°15'W 40.0' Scriber 28 HES 143 BT
- 29. Found Original 36" Fir now a 38" Stump Scriber 29 HES 143 on North Face From which Bears: A 5" Fir N 59°30'E 50.1' Scriber 29 HES 143 BT A 7" Fir N 88°E 29.4' Scriber 29 HES 143 BT Set 1" x 36" Galvanized Pipe with Brass Cap as a Bearing Object 20.0' Due East of the Corner and Stamped as Shown
- 30. Found Brass Cap Stamped as Shown
- 31. Set 1" x 36" Galvanized Pipe with Brass Cap Stamped as Shown From which Bears: A 6" Fir S 27°15'E 48.1' Scriber 31 HES 143 BT A 6" Fir S 23°30'W 26.0' Scriber 31 HES 143 BT



BEARINGS BASED ON RECORDED G.L.O. BEARING FOR SECTION LINE BETWEEN SECTIONS 4 & 9

COUNTY SURVEYORS FILE DATA
DO NOT REMOVE FROM OFFICE