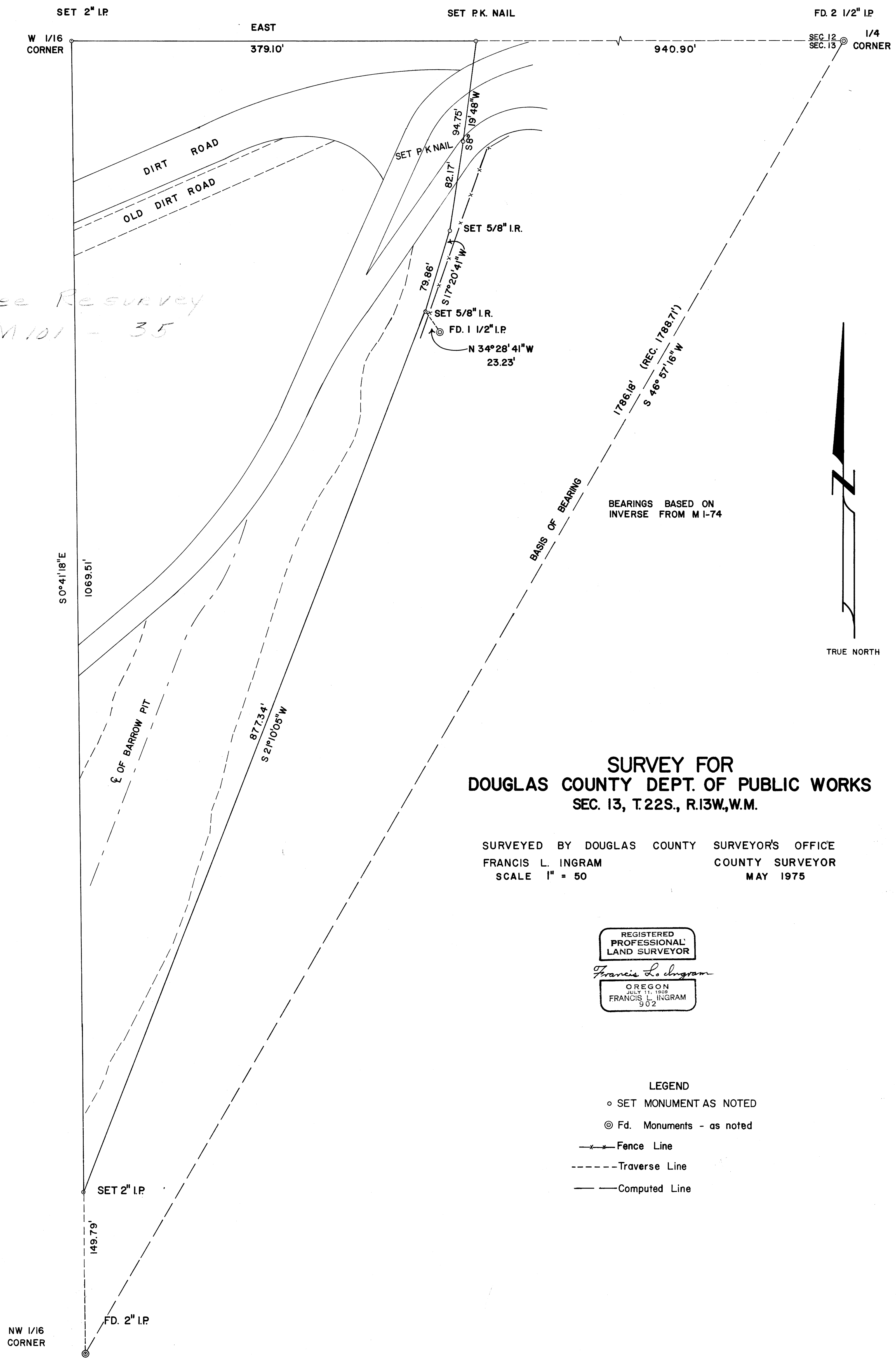


FILED  
RECEIVED  
MAY 29 1975  
COUNTY SURVEYOR  
DOUGLAS COUNTY, ORE.

See Resurvey  
M 101 - 35



**SURVEY FOR  
DOUGLAS COUNTY DEPT. OF PUBLIC WORKS  
SEC. 13, T.22S., R.13W., W.M.**

SURVEYED BY DOUGLAS COUNTY SURVEYOR'S OFFICE  
FRANCIS L. INGRAM COUNTY SURVEYOR  
SCALE 1" = 50 MAY 1975

REGISTERED  
PROFESSIONAL  
LAND SURVEYOR  
*Francis L. Ingram*  
OREGON  
JULY 11, 1958  
FRANCIS L. INGRAM  
902

- LEGEND
- SET MONUMENT AS NOTED
  - ⊙ Fd. Monuments - as noted
  - x-x- Fence Line
  - - - - - Traverse Line
  - Computed Line

C.S. File 57-1-34  
Map File M54-F-14

CS FILE NOT SCANNED

SUPPORT DATA FOR SURVEY