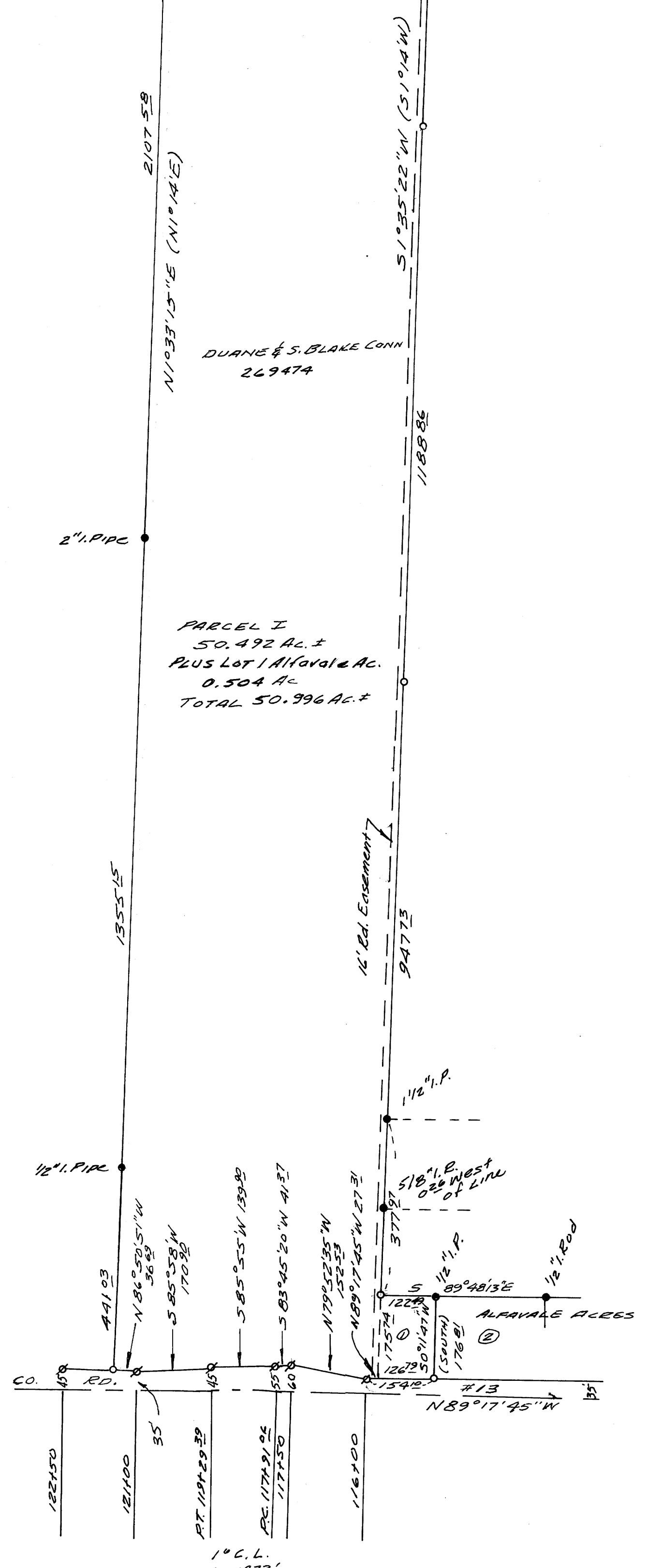
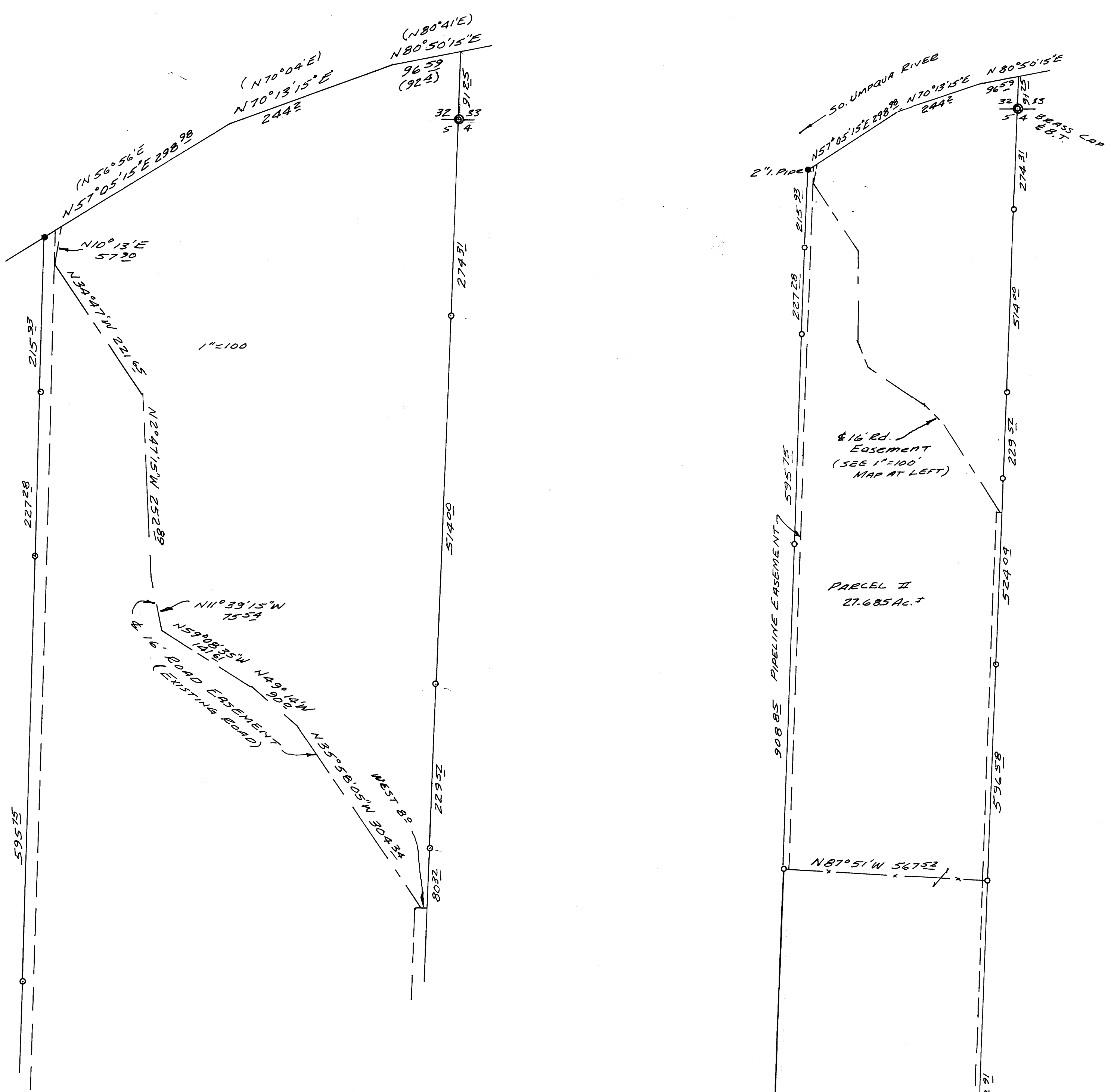


FILED 2  
RECEIVED  
COUNTY SURVEYORS  
CLATSOP COUNTY, ORE

MAP FILE 156-12



SURVEY FOR DEED DESCRIPTION  
IN SEC. 5, 8, 13, T. 21 S., R. 6 W. W. M.  
& SEC. 32, T. 26 S., R. 6 W. W. M.  
FOR S. BLAKE CONN & DUANE CONN  
BY BRUCE ROGERS  
APR., 1975  
1" = 200'

Bruce R. Rogers  
BRUCE R. ROGERS  
SURVEYOR

- - FOUND MONUMENTS
- - CO. R/W PINS
- - SET 3/8" IRON RODS
- BEARINGS BASED ON  
NO. LINE CO. RD. #13

MAP FILE 156-12