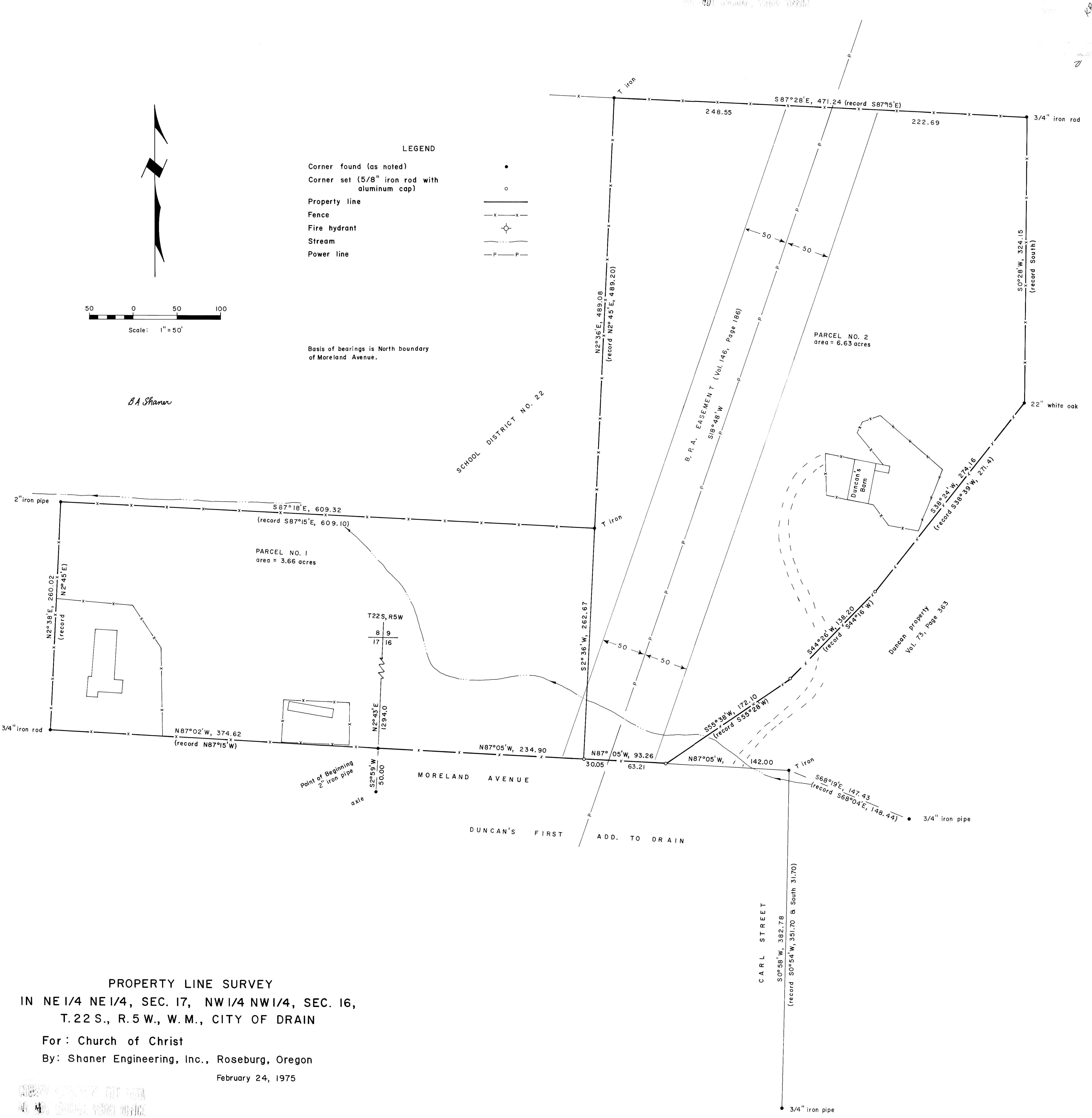


LEGEND

Corner found (as noted)	•
Corner set (5/8" iron rod with aluminum cap)	o
Property line	—
Fence	-x-x-
Fire hydrant	⊕
Stream	~
Power line	-P-P-

Basis of bearings is North boundary of Moreland Avenue.

BA Shaner



PROPERTY LINE SURVEY
 IN NE 1/4 NE 1/4, SEC. 17, NW 1/4 NW 1/4, SEC. 16,
 T. 22 S., R. 5 W., W. M., CITY OF DRAIN

For: Church of Christ
 By: Shaner Engineering, Inc., Roseburg, Oregon
 February 24, 1975

SHANER ENGINEERING, INC.
 100 N. 10TH STREET, ROSEBURG, OREGON