

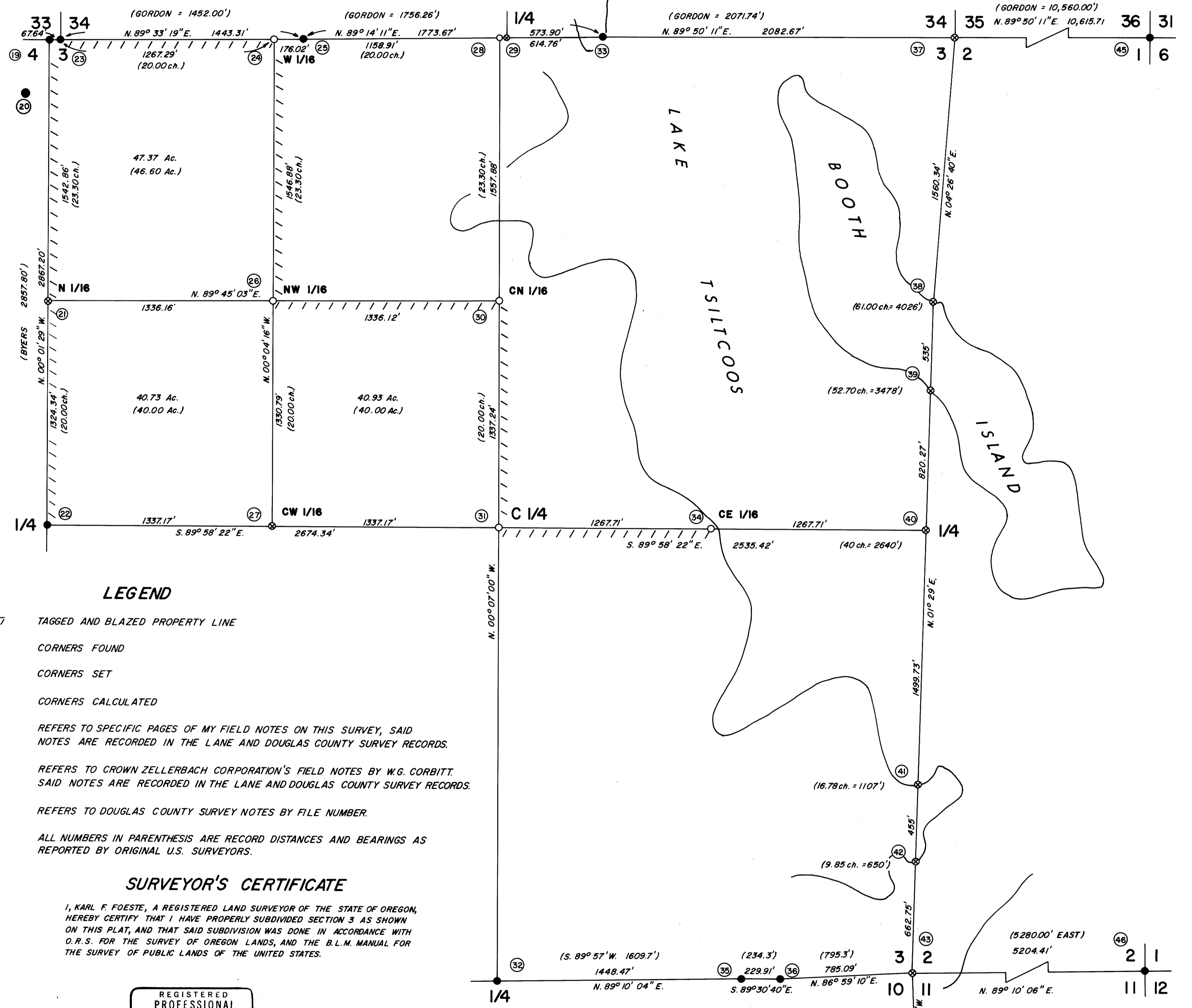
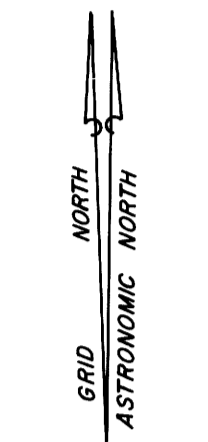
# TRANSIT AND TAPE SURVEY

FILED 2/  
RECEIVED 2/  
DEC 17 1974  
COUNTY SURVEYOR  
DOUGLAS COUNTY, ORE.

COR. OREGON STATE PLANE ACCESSORIES—(BEARING TREES AND REFERENCES)  
NO. COORDINATES, SOUTH ZONE

- 19 824,186.52  
1,044,580.81  
I FOUND BOTH ORIGINAL SPRUCE BEARING TREES. THE SOUTHWEST BEARING TREE IS NOW A ROTTEN SNAG WITH SCRIBING VISIBLE. THE SOUTH EAST BEARING TREE IS A ROTTEN STUMP. AT RECORD DISTANCES FROM CENTERS OF SAID BEARING TREES I SET FLUSH A 2 IN. X 3/8 IN. CONCRETE FILLED GALVANIZED IRON PIPE WITH 3 IN. BRASS CAP FULLY STAMPED, FROM WHICH I SET TWO NEW BEARING TREES: 24 IN. SPRUCE BEARS S. 35° W. 33.11'. TO FACE SCRIBED "T 205 R 12 W S 4 BT"; A 24 IN. SPRUCE BEARS S. 70° E. 26.61'. TO FACE SCRIBED "T 205 R 12 W S 3 BT". (FN, PG. 3)
- 21 822,645.08  
1,044,514.72  
CALCULATED CORNER
- 22 821,321.95  
1,044,458.05  
I FOUND 1 1/2 IN. X 27 IN. IRON PIPE SET BY KRUGER IN 1941, FROM WHICH: THE ORIGINAL 10 IN. HEMLOCK BEARING TREE, NOW A STUMP BEARS S. 10° E. 9.21'. TO FACE WITH PORTION OF SCRIBING VISIBLE. CORBITT'S 22 IN. FIR SNAG BEARS N. 4° W. 27.21'. TO NAIL IN FACE. I REMOVED KRUGER'S IRON PIPE AND IN ITS PLACE SET FLUSH A 2 IN. X 3/8 IN. CONCRETE FILLED GALVANIZED IRON PIPE WITH 3 IN. BRASS CAP FULLY STAMPED, FROM WHICH I SET TWO NEW BEARING TREES: 8 IN. HEMLOCK BEARS S. 62° W. 3.61'. TO FACE SCRIBED, "1/4 S 4 BT". 13 IN. HEMLOCK BEARS S. 51° E. 27.35'. TO FACE SCRIBED "1/4 S 3 BT". (FN, PG. 4, C.Z.C. BK. I, PG. 33)
- 23 824,183.59  
1,044,648.38  
I FOUND THREE OF THE ORIGINAL FOUR BEARING TREES SET BY HARVEY GORDON IN 1858. MEASURING FROM THEIR CENTERS I SET FLUSH A 2 IN. X 3/8 IN. CONCRETE FILLED GALVANIZED IRON PIPE WITH 3 IN. BRASS CAP FULLY STAMPED, FROM WHICH THE CENTERS OF THE ORIGINAL BEARING TREES BEAR AS FOLLOWS: 70 IN. SPRUCE STUMP BEARS N. 71 1/2° E. 32.61'. SCRIBING VISIBLE. 30 IN. SPRUCE STUMP BEARS S. 46 1/4° E. 52.61'. RECONSTRUCTED POSITION OF 80 IN. SPRUCE WINDFALL (HEMLOCK IN U.S. NOTES) BEARS N. 49 1/2° W. 53.11'. I SET TWO NEW BEARING TREES: 24 IN. TWIN SPRUCE BEARS N. 43° E. 14.71'. TO FACE SCRIBED "T 195 R 12 W S 4 BT". 22 IN. SPRUCE BEARS N. 7° W. 24.91'. TO FACE SCRIBED "T 195 R 12 W S 3 BT". (FN, PG. 12)
- 24 824,139.59  
1,045,914.92  
I SET FLUSH A 2 IN. X 3/8 IN. CONCRETE FILLED IRON PIPE WITH 3 IN. BRASS CAP FULLY STAMPED, FROM WHICH I SET TWO BEARING TREES: 16 IN. SPRUCE BEARS S. 63° W. 19.71'. TO FACE SCRIBED "W 1/6 S 3 BT". 9 IN. HEMLOCK BEARS S. 70° E. 19.41'. TO FACE SCRIBED "W 1/6 S 3 BT". (FN, PG. 13)
- 25 824,132.34  
1,046,090.78  
FOUND ORIGINAL 100 IN. SPRUCE LINE TREE (NOW A STUMP)
- 26 822,593.08  
1,045,849.87  
I SET FLUSH A 2 IN. X 3/8 IN. CONCRETE FILLED GALVANIZED IRON PIPE WITH 3 IN. BRASS CAP FULLY STAMPED, FROM WHICH I SET TWO BEARING TREES: 20 IN. HEMLOCK BEARS N. 85° E. 22.21'. TO FACE SCRIBED "NW 1/6 S 3 BT". 24 IN. SPRUCE BEARS N. 10° W. 33.91'. TO FACE SCRIBED "NW 1/6 S 3 BT". (FN, PG. 14)
- 27 821,263.46  
1,045,793.94  
CALCULATED CORNER
- 28 824,097.63  
1,047,249.17  
THIS CORNER WAS CREATED, BUT NOT SET, DURING Wm. H. BYERS 1902 SURVEY OF SECTION 3, T.20S, R.12W, W.M. I SET FLUSH A 2 IN. X 3/8 IN. CONCRETE FILLED GALVANIZED IRON PIPE WITH 3 IN. BRASS CAP FULLY STAMPED, FROM WHICH I SET TWO BEARING TREES: 19 IN. FIR BEARS S. 17° E. 60.31'. TO FACE SCRIBED "1/4 S 3 BT". 18 IN. SPRUCE BEARS S. 15° W. 48.11'. TO FACE SCRIBED "1/4 S 3 BT". (FN, PG. 15)
- 29 824,096.41  
1,047,290.07  
CORNER LOST, CALCULATED POSITION BY SINGLE PROPORTION BETWEEN FOUND 100 IN. SPRUCE LINE TREE AND FOUND MEANDER CORNER BETWEEN SECTIONS 34 AND 3.
- 30 822,541.07  
1,047,184.96  
I SET FLUSH A 2 IN. X 3/8 IN. CONCRETE FILLED GALVANIZED IRON PIPE WITH 3 IN. BRASS CAP FULLY STAMPED, FROM WHICH I SET TWO BEARING TREES: 24 IN. SPRUCE BEARS S. 52° W. 15.61'. TO FACE SCRIBED "CN 1/6 S 3 BT". 24 IN. SPRUCE BEARS N. 7° W. 15.41'. TO FACE SCRIBED "CN 1/6 S 3 BT". (FN, PG. 16)
- 31 821,204.97  
1,047,129.83  
I SET FLUSH A 2 IN. X 3/8 IN. CONCRETE FILLED GALVANIZED IRON PIPE WITH 3 IN. BRASS CAP FULLY STAMPED, FROM WHICH I SET TWO BEARING TREES: 24 IN. SPRUCE BEARS S. 88° W. 34.21'. TO FACE SCRIBED "C 1/4 S 3 BT". 24 IN. SPRUCE BEARS N. 51 1/2° E. 35.21'. TO FACE SCRIBED "C 1/4 S 3 BT". (FN, PG. 17)
- 32 818,529.07  
1,047,019.40  
I FOUND 1 1/2 IN. IRON PIPE SET BY CORBITT IN 1943, ALSO FOUND CORBITT'S BEARING TREES WHICH BEAR AS FOLLOWS: 30 IN. CEDAR SNAG BEARS S. 4° W. 27.21'. TO BOAT SPIKE. 24 IN. CEDAR STUMP BEARS N. 16 1/2° E. 37.31'. TO BOAT SPIKE. (SEE C.Z.C. BK. I, PG. 32). I ALSO FOUND BEARING TREES SET BY DOUGLAS COUNTY SURVEYORS: 8 IN. ALDER, NOW DYING, BEARS N. 30° E. 8.61'. TO SCRIBED FACE. 13 IN. SPRUCE BEARS S. 24° W. 17.41'. TO SCRIBED FACE. (SEE COUNTY SURVEY FILE NO. 53/86 NO. 43). I REMOVED CORBITT'S IRON PIPE AND IN ITS PLACE SET A 2 IN. X 3/8 IN. CONCRETE FILLED GALVANIZED IRON PIPE WITH 3 IN. BRASS CAP FULLY STAMPED, FROM WHICH I SET ONE NEW BEARING TREE: 7 IN. SPRUCE BEARS N. 24° E. 34.11'. TO FACE SCRIBED "1/4 S 3 BT". (FN, PG. 18)
- 33 824,079.22  
1,047,863.63  
I FOUND THE ORIGINAL NORTHWEST SPRUCE BEARING TREE SET BY HARVEY GORDON IN 1858. IT IS NOW A ROTTEN SNAG WITH "BT" PLAINLY SCRIBED ON LOWER BOWEL. AT RECORD DISTANCE OF 11 LINKS AND RECORD BEARING OF S. 13° E. FROM SAID BEARING TREE I SET FLUSH A 2 IN. X 3/8 IN. CONCRETE FILLED GALVANIZED IRON PIPE WITH 3 IN. BRASS CAP FULLY STAMPED, FROM WHICH I SET TWO NEW BEARING TREES: 16 IN. FIR BEARS N. 14° E. 26.61'. TO FACE SCRIBED "T 195 R 12 W S 4 MC BT". 11 IN. FIR BEARS N. 67° W. 21.11'. TO FACE SCRIBED "T 195 R 12 W S 3 MC BT". (FN, PG. 19)
- 34 821,149.52  
1,048,396.32  
I SET FLUSH A 2 IN. X 3/8 IN. CONCRETE FILLED GALVANIZED IRON PIPE WITH 3 IN. BRASS CAP FULLY STAMPED, FROM WHICH I SET TWO BEARING TREES: 40 IN. SPRUCE BEARS S. 22° W. 17.31'. TO FACE SCRIBED "CE 1/6 BT 3". 40 IN. SPRUCE BEARS S. 33° E. 31.41'. TO FACE SCRIBED "CE 1/6 S 3 BT". (FN, PG. 20)
- 35 818,487.43  
1,048,467.27  
FOUND CORBITT'S 1 1/2 IN. X 4 1/4 IN. IRON PIPE SET IN 1943 FROM WHICH: THE ORIGINAL 14 IN. HEMLOCK, NOW AN 18 IN. SNAG, BEARS S. 63° E. 12.51'. TO BOAT SPIKE IN FACE SCRIBED "BT". ORIGINAL 24 IN. HEMLOCK, NOW 30 IN. STUMP HAS BEEN MOVED BY CAT. CORBITT'S 30 IN. CEDAR BEARS S. 19° E. 13.01'. TO NAIL IN FACE. I REMOVED CORBITT'S IRON PIPE AND IN ITS PLACE SET A 2 IN. X 3/8 IN. CONCRETE FILLED GALVANIZED IRON PIPE WITH 3 IN. BRASS CAP FULLY STAMPED, FROM WHICH I SET ONE NEW BEARING TREE: 20 IN. CEDAR BEARS S. 26° E. 14.21'. TO FACE SCRIBED "MC S 10 BT". (FN, PG. 21; COUNTY SURVEY FILE 52/91)
- 36 818,475.32  
1,048,696.87  
I FOUND CORBITT'S 1 1/2 IN. X 4 1/4 IN. IRON PIPE SET IN 1943, FROM WHICH: CORBITT'S 4 IN. ALDER, NOW 6 IN. ALDER WITH TOP CUT OFF, BEARS N. 48° W. 6.61'. TO NAIL. THE ORIGINAL NORTHWEST BEARING TREE IS BLOWN OVER AND ROTTEN. THE ORIGINAL SOUTHWEST BEARING TREE IS MISSING. I DID NOT LOOK FOR CORBITT'S 4 1/4 IN. FIR STUMP. I REMOVED CORBITT'S IRON PIPE AND IN ITS PLACE SET A 2 IN. X 3/8 IN. CONCRETE FILLED GALVANIZED IRON PIPE WITH 3 IN. BRASS CAP FULLY STAMPED, FROM WHICH I SET ONE NEW BEARING TREE: 20 IN. HEMLOCK BEARS N. 70° W. 42.01'. TO FACE SCRIBED "T 205 R 12 W S 3 MC BT". (FN, PG. 22; COUNTY SURVEY FILE NO. 52/91)
- 37 823,995.05  
1,049,944.61  
CALCULATED POSITION
- 38 822,446.10  
1,049,756.49  
TOPOGRAPHIC CALLS ARE THE ONLY EVIDENCE I COULD FIND FOR RE-ESTABLISHING THE EAST LINE OF SECTION 3. ACTUAL FIELD MEASUREMENTS TAKEN BY ME OF THE UPLAND VEGETATION LINE ON THE PENINSULA AND BOOTH ISLAND HAVE SHOWN THAT THERE IS ONLY A SMALL EAST-WEST AREA THROUGH WHICH THIS LINE COULD PASS AND CLOSELY MEET THE CALLS AS RECORDED BY HARVEY GORDON IN 1858.
- 39 821,912.38  
1,049,719.52  
CALCULATED USING DOUBLE PROPORTION. LATITUDE BETWEEN CORNERS 42 AND 44 DEPARTURE BETWEEN CORNERS 36 AND 46.
- 40 821,094.07  
1,049,662.82  
I FOUND THE ORIGINAL 36 IN. FIR BEARING TREE SET BY HARVEY GORDON IN 1858. IT IS NOW A STUMP WITH NAIL ABOVE SPRING BOARD HOLE AS REPORTED BY W. G. CORBITT IN APRIL 1943. SCRIBING IS NO LONGER VISIBLE AND I COULD NOT FIND CORBITT'S 1 1/2 IN. IRON PIPE. I MEASURED FROM SAID NAIL S. 21° E. 28.81'. AND SET FLUSH A 2 IN. X 3/8 IN. CONCRETE FILLED GALVANIZED IRON PIPE WITH 3 IN. BRASS CAP FULLY STAMPED. THE NORTHEAST BEARING TREE IS MISSING. (FN, PG. 23; C.Z.C. SECTION LINE NOTES BY W.G. CORBITT, PG. 20)
- 41 819,597.93  
1,049,359.18  
I FOUND THIS CORNER AS RECORDED IN COUNTY SURVEY FILE NO. 53/85.
- 42 819,144.01  
1,049,527.72  
I FOUND THE 1 1/2 IN. IRON PIPE SET BY W. G. CORBITT IN 1942. FOR SOUTHEAST CORNER SECTION 2 (SEE C.Z.C. SECTION LINE NOTES BY W.G. CORBITT, PG. 9). FROM WHICH I FOUND THE FOLLOWING BEARING TREES SET BY LEICHLIDER IN 1958 TO BEAR AS FOLLOWS: 10 IN. POWER POLE BEARS N. 24° E. 25.11'. SCRIBED "S 1 R 4079". SPRUCE SNAG BEAR S. 40° E. 40.811'. WITH SCRIBING VISIBLE. SPRUCE STUMP BEARS S. 5° E. 68.11'. WITH SCRIBING VISIBLE. 54 IN. SPRUCE BEARS N. 88° W. 132.21'. SCRIBED "R 4079 S 2". (COUNTY SURVEY FILE)
- 43 818,482.84  
1,049,481.92  
CALCULATED USING DOUBLE PROPORTION. LATITUDE BETWEEN CORNERS 42 AND 44 DEPARTURE BETWEEN CORNERS 36 AND 46.
- 44 817,878.30  
1,049,481.22  
I FOUND THE ORIGINAL 36 IN. FIR BEARING TREE SET BY HARVEY GORDON IN 1858. IT IS NOW A STUMP WITH NAIL ABOVE SPRING BOARD HOLE AS REPORTED BY W. G. CORBITT IN APRIL 1943. SCRIBING IS NO LONGER VISIBLE AND I COULD NOT FIND CORBITT'S 1 1/2 IN. IRON PIPE. I MEASURED FROM SAID NAIL S. 21° E. 28.81'. AND SET FLUSH A 2 IN. X 3/8 IN. CONCRETE FILLED GALVANIZED IRON PIPE WITH 3 IN. BRASS CAP FULLY STAMPED. THE NORTHEAST BEARING TREE IS MISSING. (FN, PG. 23; C.Z.C. SECTION LINE NOTES BY W.G. CORBITT, PG. 20)
- 45 823,566.02  
1,060,351.68  
I FOUND THIS CORNER AS RECORDED IN COUNTY SURVEY FILE NO. 53/85.
- 46 818,333.17  
1,054,684.18  
I FOUND THE 1 1/2 IN. IRON PIPE SET BY W. G. CORBITT IN 1942. FOR SOUTHEAST CORNER SECTION 2 (SEE C.Z.C. SECTION LINE NOTES BY W.G. CORBITT, PG. 9). FROM WHICH I FOUND THE FOLLOWING BEARING TREES SET BY LEICHLIDER IN 1958 TO BEAR AS FOLLOWS: 10 IN. POWER POLE BEARS N. 24° E. 25.11'. SCRIBED "S 1 R 4079". SPRUCE SNAG BEAR S. 40° E. 40.811'. WITH SCRIBING VISIBLE. SPRUCE STUMP BEARS S. 5° E. 68.11'. WITH SCRIBING VISIBLE. 54 IN. SPRUCE BEARS N. 88° W. 132.21'. SCRIBED "R 4079 S 2". (COUNTY SURVEY FILE)
- 20 823,886.44  
1,044,430.48  
I FOUND SILTCOOS LOOKOUT TOWER TRIANGULATION STATION. IT IS A U.S.D.A. FOREST SERVICE DISK STAMPED "SILTCOOS 1936". THIS STATION WAS USED AS THE BASIS OF COORDINATES FOR THIS SURVEY.

θ = 2° 28' 47"



### LEGEND

- — — — — TAGGED AND BLAZED PROPERTY LINE
- CORNERS FOUND
- CORNERS SET
- ⊙ CORNERS CALCULATED
- FN. PG. REFERS TO SPECIFIC PAGES OF MY FIELD NOTES ON THIS SURVEY, SAID NOTES ARE RECORDED IN THE LANE AND DOUGLAS COUNTY SURVEY RECORDS.
- C.Z.C. REFERS TO CROWN ZELLERBACH CORPORATION'S FIELD NOTES BY W.G. CORBITT. SAID NOTES ARE RECORDED IN THE LANE AND DOUGLAS COUNTY SURVEY RECORDS.
- C.S. FILE NO. REFERS TO DOUGLAS COUNTY SURVEY NOTES BY FILE NUMBER.
- ALL NUMBERS IN PARENTHESIS ARE RECORD DISTANCES AND BEARINGS AS REPORTED BY ORIGINAL U.S. SURVEYORS.

### SURVEYOR'S CERTIFICATE

I, KARL F. FOESTE, A REGISTERED LAND SURVEYOR OF THE STATE OF OREGON, HEREBY CERTIFY THAT I HAVE PROPERLY SUBDIVIDED SECTION 3 AS SHOWN ON THIS PLAT, AND THAT SAID SUBDIVISION WAS DONE IN ACCORDANCE WITH O.R.S. FOR THE SURVEY OF OREGON LANDS, AND THE B.L.M. MANUAL FOR THE SURVEY OF PUBLIC LANDS OF THE UNITED STATES.

REGISTERED  
PROFESSIONAL  
LAND SURVEYOR

*Karl F. Foeste*

OREGON  
JULY 12, 1948  
KARL F. FOESTE  
0849

DRAWN BY L.G. RAKE