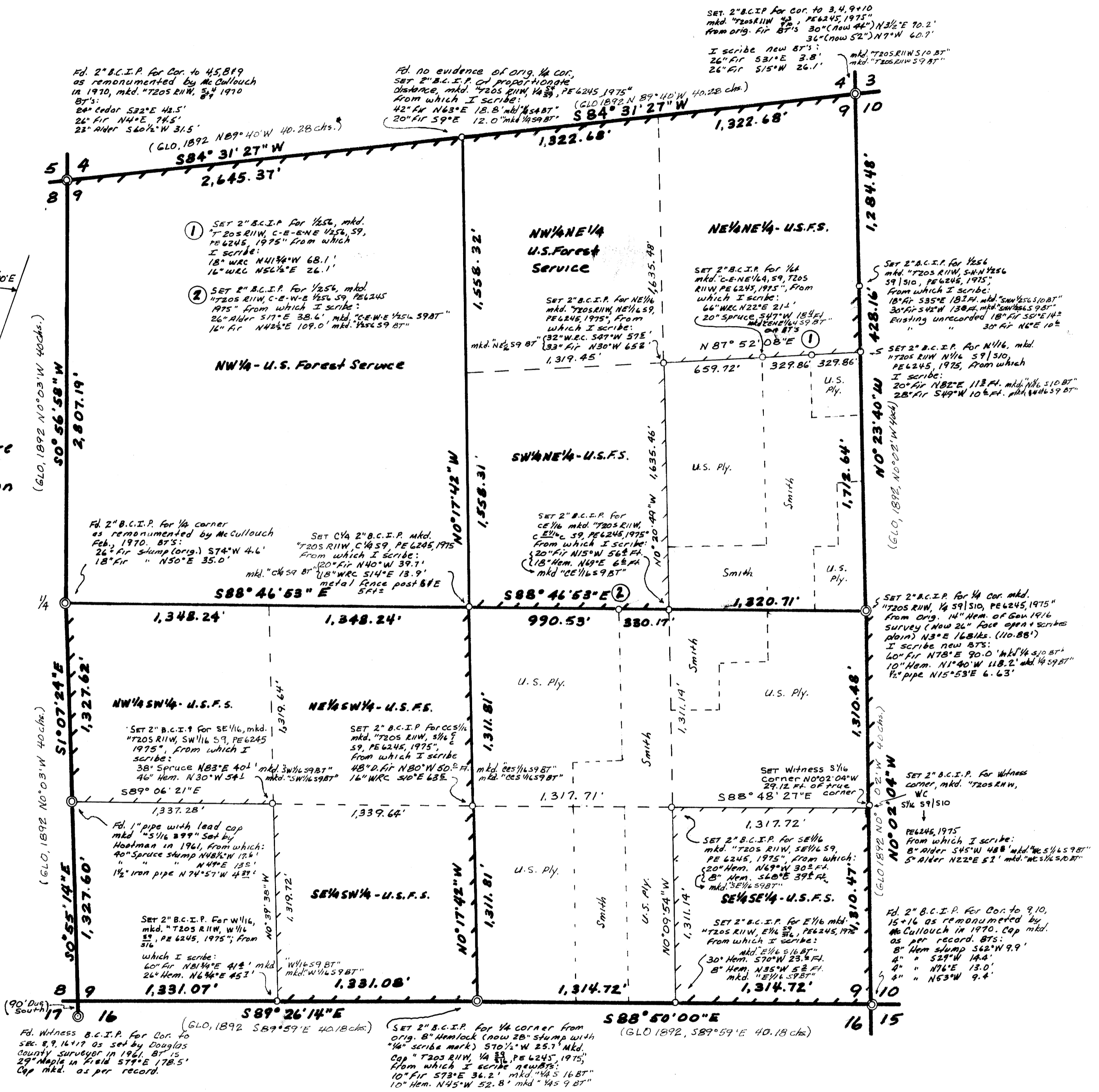


SUBDIVISION SEC. 9, T.20S, R.11W, W.M., DOUGLAS CO.,

SCALE 1" = 500'

OREGON

APRIL 21, 1975



LEGEND

- Corners Found ○
- Corners Set ○
- Boundary Lines Posted with metal fence posts & u.s.f.s. Boundary signs. ———

NOTES: Survey method was theodolite traverse. Distances taken with Geodimeter "76" Laser and 200 Ft. steel tape. All lines & corners were run through closed circuits. All bearing trees were scribed with lettering and blaze as per instructions in the 1973 BLM surveying manual. Brass washers stamped "PE 6245" were nailed in the BT Blaze. All brass caps were stamped as per instructions in the 1973 manual. All BT'S have various signs posted on the front and back. Each corner is guarded by one or two signs + metal fence posts. For further corner information, Refer to field note books 1 thru 4, Siuslaw National Forest survey contract # 004649N.

I, Ronald E. Stuntzner, a registered professional engineer in the state of Oregon, hereby certify that this plat and notes hereon, are a correct representation of a survey I performed during January - April, 1975, for the U.S. Forest Service, in accordance with the statutes of the State of Oregon and with the Articles of my contract.

1st Ronald E. Stuntzner
Registered Professional Engineer
Ore. License # 6245

Witnesses: Thomas M. Hoshall, Technician
Robert B. Deveny, "

