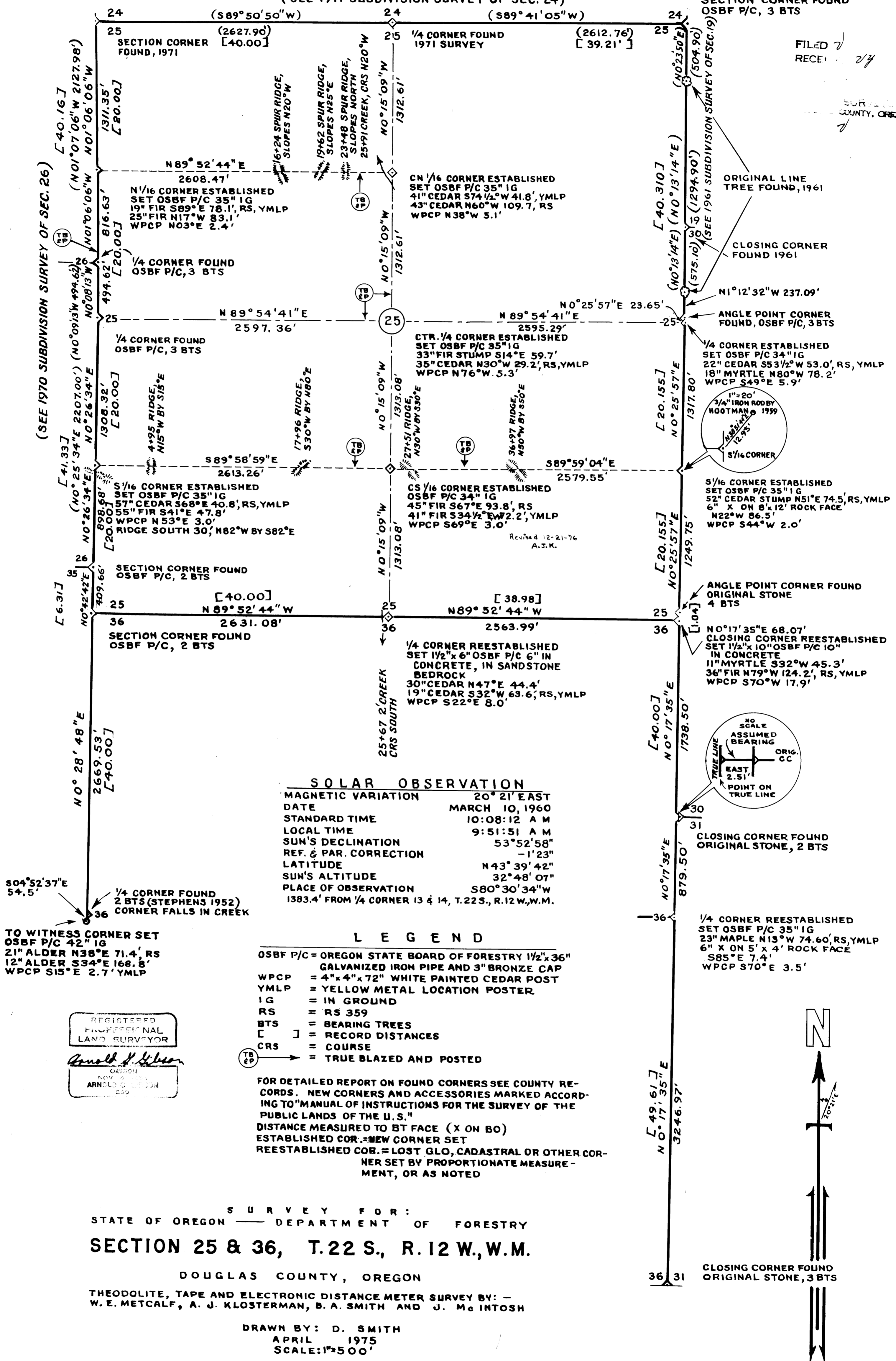


(SEE 1971 SUBDIVISION SURVEY OF SEC. 24)

SECTION CORNER FOUND
OSBF P/C, 3 BTS

FILED 7
RECEIVED 2/4

SURVEYED
COUNTY, ORE.



REGISTERED
PROFESSIONAL
LAND SURVEYOR
Arnold J. Wilson
OREGON
NOV 9 1959
ARNOLD J. WILSON
259

