

SURVEY IN LOT 14, PLAT E, UMPQUA FRUITLANDS, SEC. 23, TWP. 27 SOUTH, RNG. 6 WEST, WILLAMETTE MER.

Surveyed for Com-tronics by Don E. Garrett

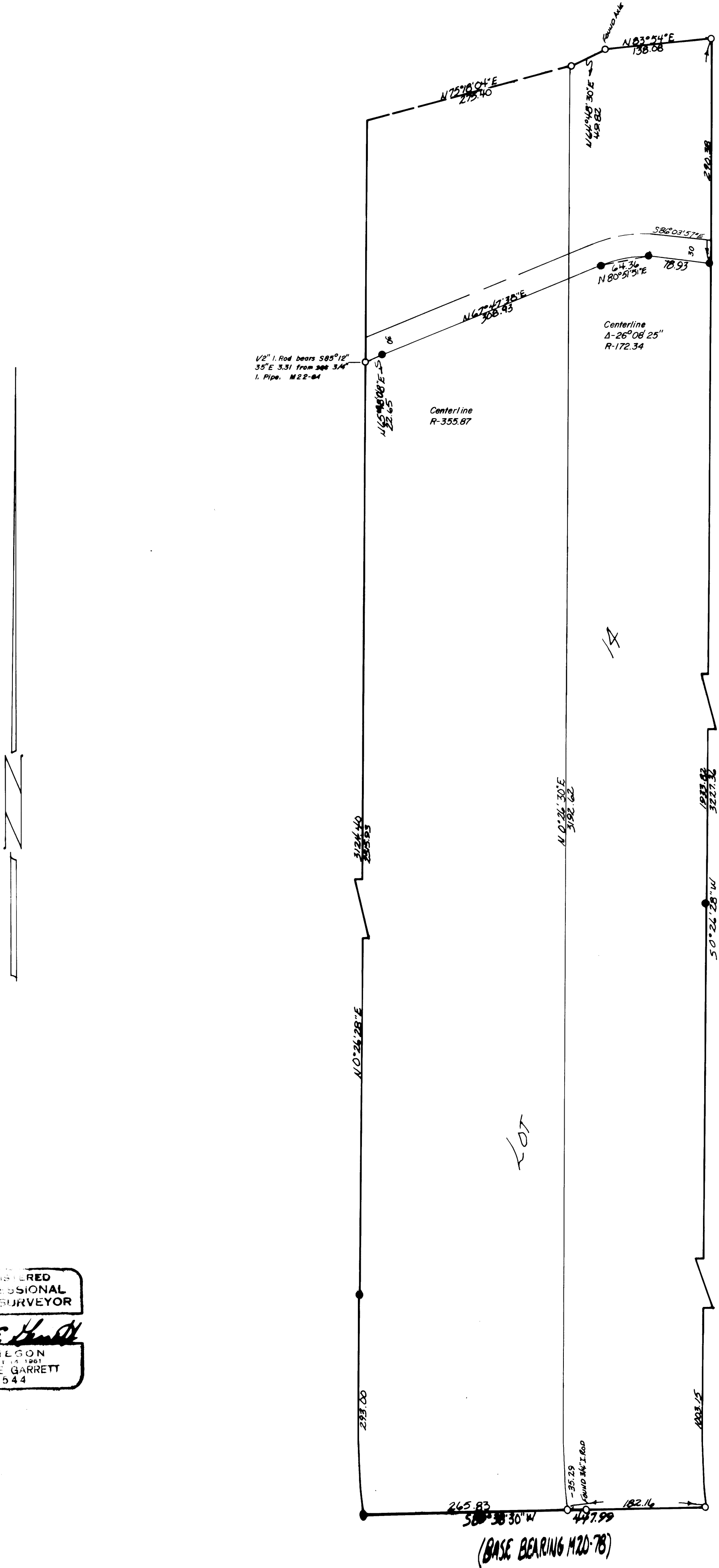
April, 1975

COUNTY SURVEYORS FILE DATA
DO NOT REMOVE FROM OFFICE

Scale 1" = 100'

- Set 3/4" Iron Pipe
- Found Steel tube with cap

FILED
REC'D
K.E.



Description of 60' road Vol. 356 Pg. 26 and M 22-64

REGISTERED
PROFESSIONAL
LAND SURVEYOR

Don E. Garrett

OREGON
JULY 14, 1961
DON E. GARRETT
544

(BASE BEARING M20-78)