

# SURVEY TO ESTABLISH PROPERTY CORNERS SITUATED IN SECTION 18, T.26S.,R.3W.W.M. FOR - STEVE DUNCAN & FRED SMITH BY - BAUGHMAN SURVEYING SERVICE MARCH 1975                      SCALE 1"=50'

COUNTY SURVEYORS FILE DATA  
DO NOT REMOVE FROM OFFICE

FILED 7  
RECEIVED 21  
COUNTY SURVEYOR  
CLATSOP COUNTY, ORE.

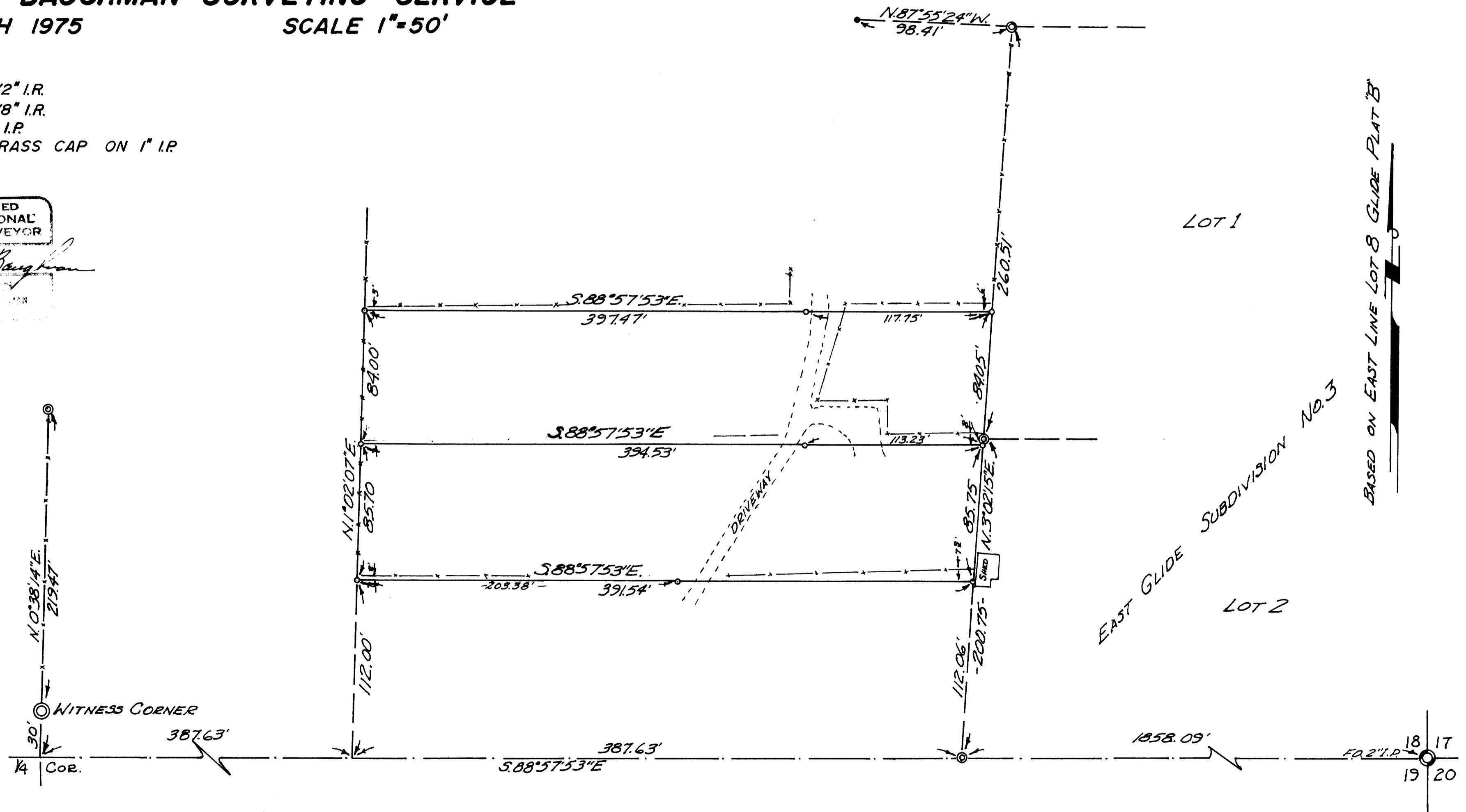
**LEGEND**

- SET 1/2" I.R.
- FD. 5/8" I.R.
- ⊙ FD. 1" I.P.
- ⊙ FD. BRASS CAP ON 1" I.P.

REGISTERED  
PROFESSIONAL  
SURVEYOR

GLEN B. BAUGHMAN  
E.S.

Glen B. Baughman



MAP FILE M.555-64

MAP FILE M.555-64