

COUNTY SURVEYORS FILE DATA  
DO NOT REMOVE FROM OFFICE

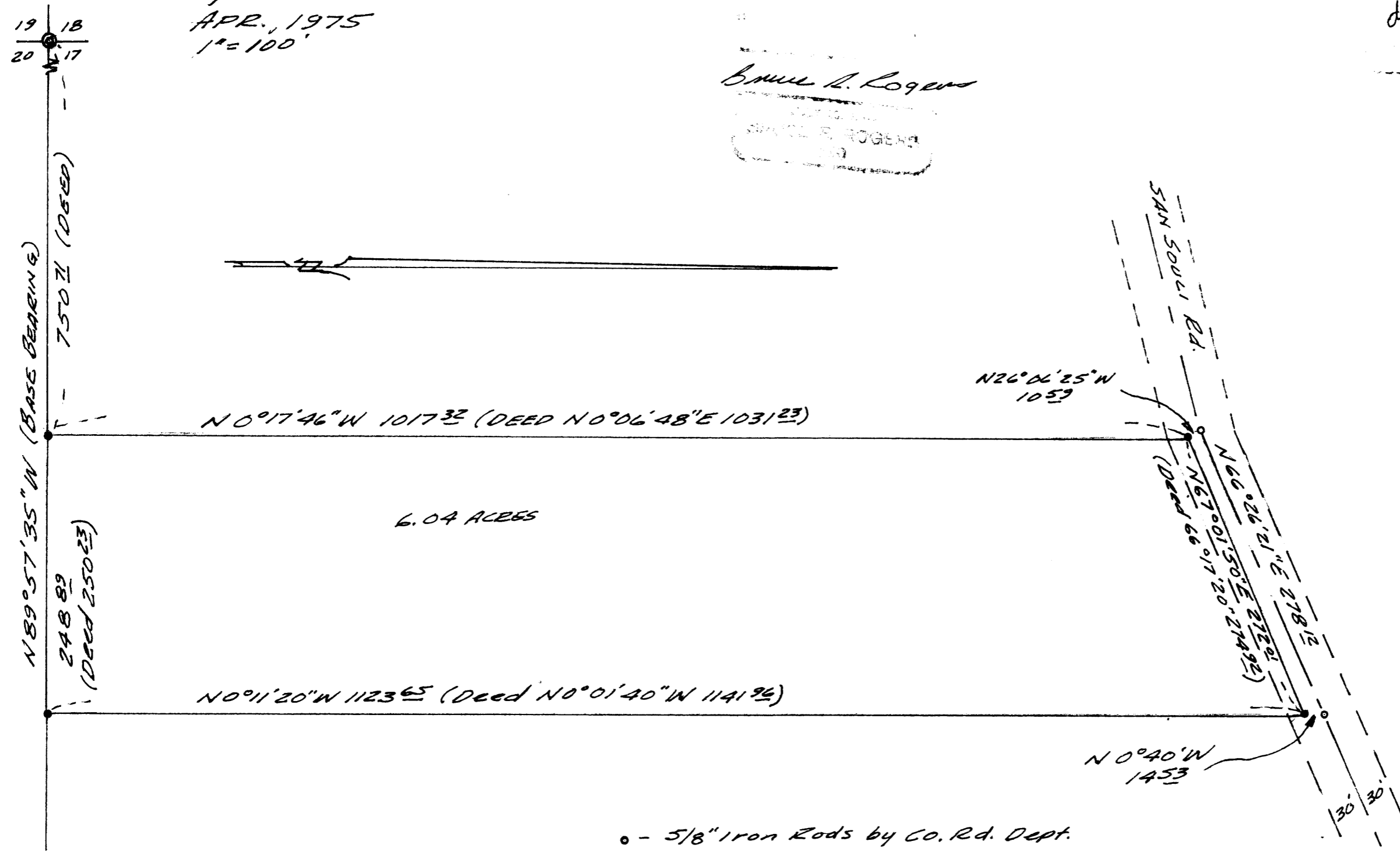
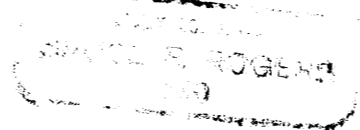
PROPERTY LINE SURVEY  
IN SEC. 17, T. 27 S., R. 6 W. W.M.  
FOR BOB SHERMAN  
by BRUCE ROGERS  
APR., 1975  
1" = 100'

FILED ✓  
RECEIVED

APR 18 1975

COUNTY SURVEYOR  
WHEELER COUNTY, ORE

Bruce A. Rogers



- - 5/8" Iron Rods by Co. Rd. Dept.
- - 5/8" Iron Rods. - M33-12

MAP FILE 055-67

MAP FILE 055-67