

CENTER LINE CURVE DATA

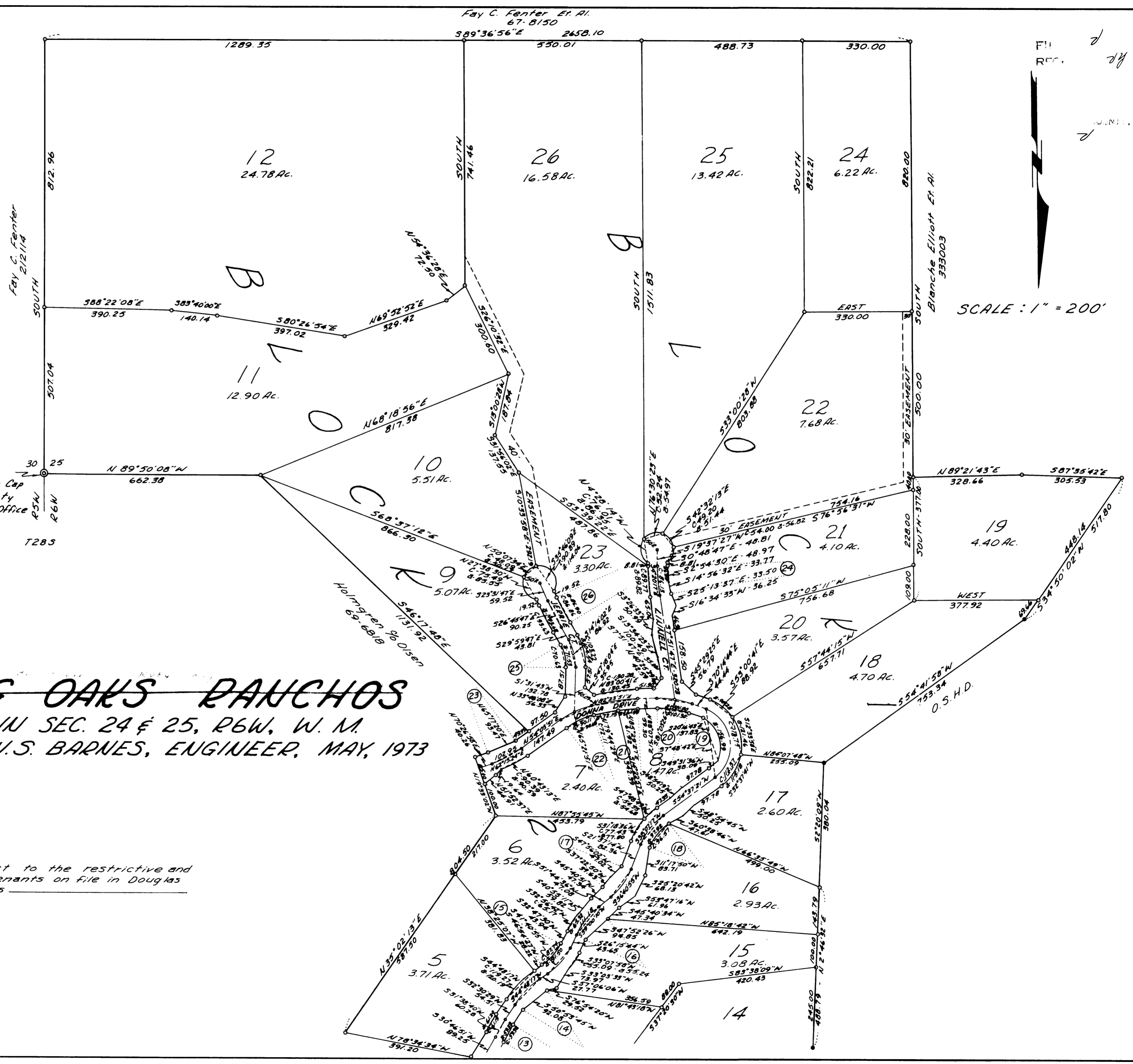
- ⑭ Δ 24°35'37"  
R 250  
T 54.49  
L 107.31
- ⑮ Δ 30°50'22"  
R 200  
T 55.16  
L 107.65
- ⑯ Δ 25°28'52"  
R 250  
T 56.52  
L 111.18
- ⑰ Δ 30°07'22"  
R 200  
T 53.82  
L 105.15
- ⑱ Δ 33°00'07"  
R 200  
T 59.25  
L 115.20
- ⑲ Δ 124°52'05"  
R 120  
T 229.87  
L 261.52
- ⑳ Δ 21°37'25"  
R 300  
T 57.29  
L 113.22
- ㉑ Δ 11°28'00"  
R 700  
T 70.28  
L 140.09
- ㉒ Δ 22°36'00"  
R 259.93  
T 51.94  
L 102.53
- ㉓ Δ 16°23'07"  
R 360  
T 51.83  
L 102.95
- ㉔ Δ 7°03'00"  
R 700  
T 43.12  
L 86.13
- ㉕ Δ 31°31'30"  
R 160  
T 45.16  
L 88.03
- ㉖ Δ 6°28'00"  
R 800  
T 45.19  
L 90.29

Initial Point  
1/4 Cor. Brass Cap  
Set by County  
Surveyor's Office

# ROLLING OAKS RANCHOS

A SUBDIVISION IN SEC. 24 & 25, R6W, W. M.  
SURVEYED BY W.S. BARNES, ENGINEER, MAY, 1973

This plat subject to the restrictive and protective covenants on file in Douglas County Records



SCALE: 1" = 200'

FILE REC.

