

UNAPPROVED SUBDIVISION SURVEY ONLY

# ROLLING OAKS RANCHOS

A SUBDIVISION IN SEC. 24 & 25, T28S, R6W, W.M. SURVEYED BY W.S. BARNES, ENGINEER, MAY 1973

SCALE: 1" = 200'

- Base of Bearings-- Solar Observation
- o Denotes 3/8" I.R. Set
  - Denotes 3/4" I.R. Found
  - Denotes Computed Points

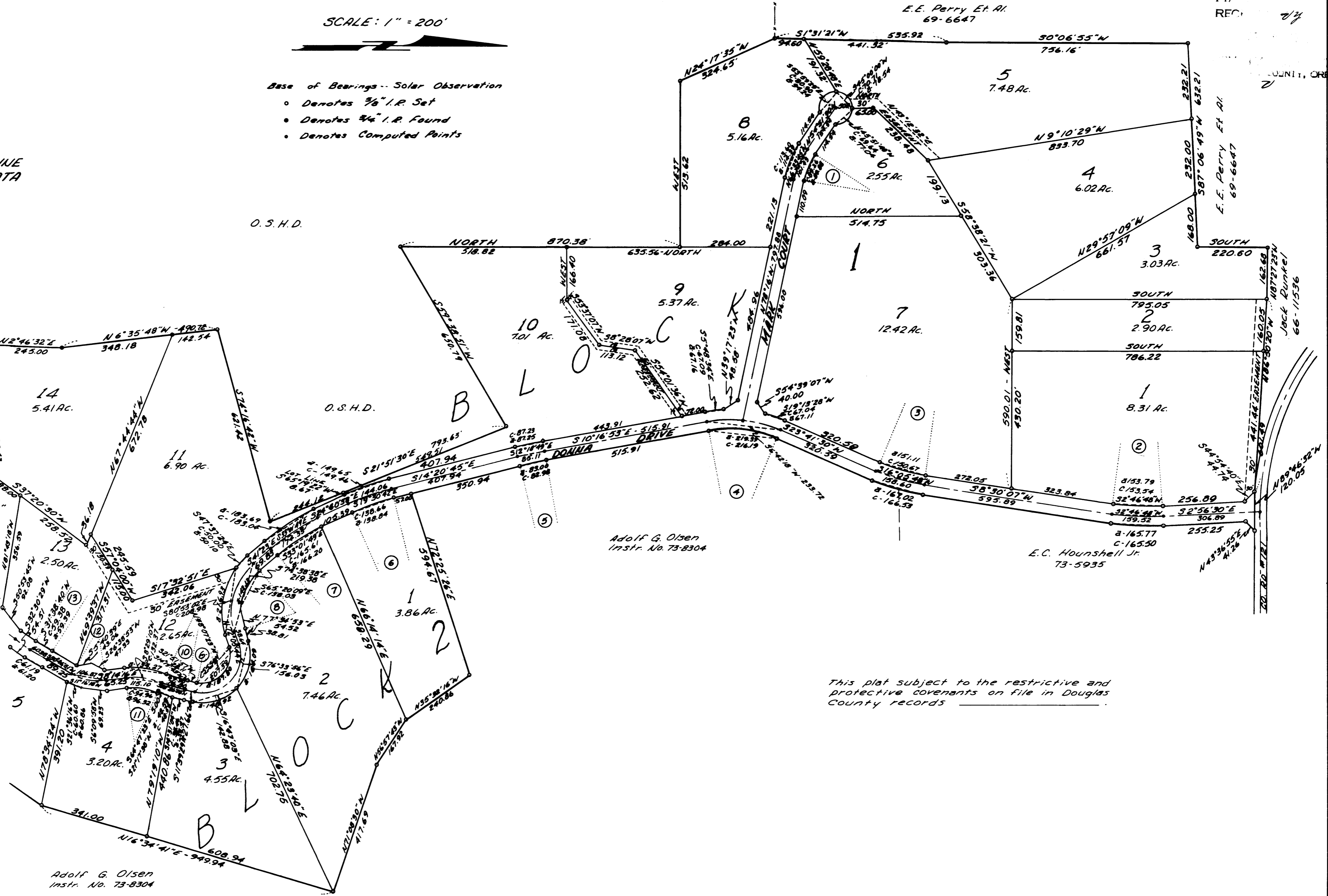
### CENTER LINE CURVE DATA

- ① Δ 23°24'30"  
R 250'  
T 51.79'  
L 102.14'
- ② Δ 11°26'37"  
R 800'  
T 80.16'  
L 159.78'
- ③ Δ 15°11'23"  
R 600'  
T 80.00'  
L 159.07'
- ④ Δ 33°58'23"  
R 400'  
T 122.19'  
L 237.18'
- ⑤ Δ 4°03'52"  
R 1200'  
T 42.58'  
L 85.12'
- ⑥ Δ 10°19'53"  
R 800'  
T 72.32'  
L 144.25'
- ⑦ Δ 16°42'22"  
R 600'  
T 88.10'  
L 174.94'
- ⑧ Δ 66°31'16"  
R 200'  
T 131.18'  
L 232.20'
- ⑨ Δ 119°33'45"  
R 120'  
T 206.02'  
L 250.41'
- ⑩ Δ 13°33'08"  
R 325.45'  
T 38.67'  
L 76.98'
- ⑪ Δ 33°26'53"  
R 200'  
T 60.09'  
L 116.75'
- ⑫ Δ 39°09'07"  
R 160'  
T 56.69'  
L 108.96'
- ⑬ Δ 1°43'38"  
R 2000'  
T 30.15'  
L 60.29'

O.S.H.D.

O.S.H.D.

Adolf G. Olsen  
Instr. No. 73-8304



This plat subject to the restrictive and protective covenants on file in Douglas County records