

UNAPPROVED SUBDIVISION SURVEY ONLY

ROLLING OAKS RANCHOS

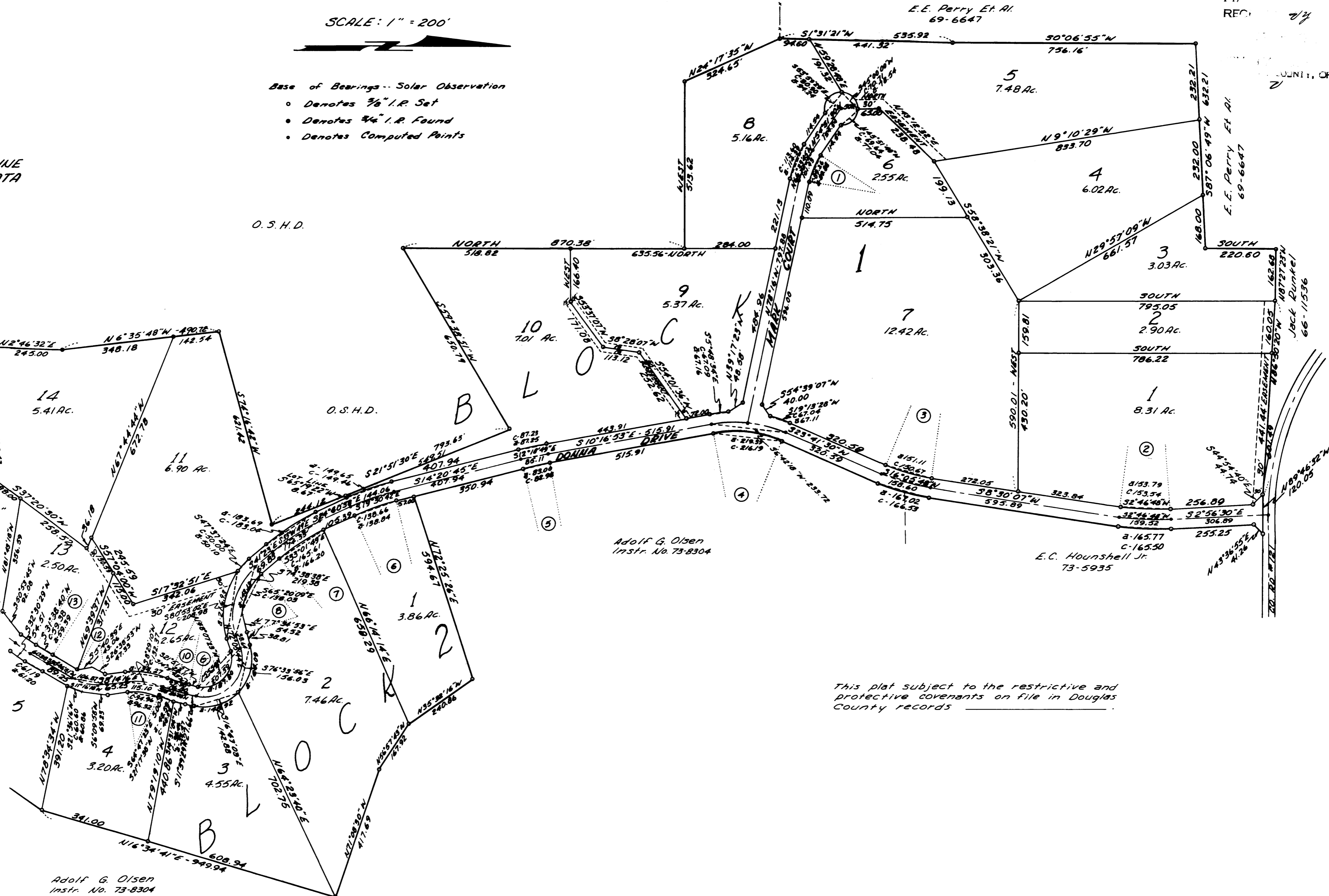
A SUBDIVISION IN SEC. 24 & 25, T28S, R6W, W.M. SURVEYED BY W.S. BARNES, ENGINEER, MAY 1973

SCALE: 1" = 200'

- Base of Bearings-- Solar Observation
- Denotes 3/8" I.R. Set
 - Denotes 3/4" I.R. Found
 - Denotes Computed Points

CENTER LINE CURVE DATA

- ① Δ 23°24'30"
R 250'
T 51.79'
L 102.14'
- ② Δ 11°26'37"
R 800'
T 80.16'
L 159.78'
- ③ Δ 15°11'23"
R 600'
T 80.00'
L 159.07'
- ④ Δ 33°58'23"
R 400'
T 122.19'
L 237.18'
- ⑤ Δ 4°03'52"
R 1200'
T 42.58'
L 85.12'
- ⑥ Δ 10°19'53"
R 800'
T 72.32'
L 144.25'
- ⑦ Δ 16°42'22"
R 600'
T 88.10'
L 174.94'
- ⑧ Δ 66°31'16"
R 200'
T 131.18'
L 232.20'
- ⑨ Δ 119°33'45"
R 120'
T 206.02'
L 250.41'
- ⑩ Δ 13°33'08"
R 325.45'
T 38.67'
L 76.98'
- ⑪ Δ 33°26'53"
R 200'
T 60.09'
L 116.75'
- ⑫ Δ 39°09'07"
R 160'
T 56.69'
L 108.96'
- ⑬ Δ 1°43'38"
R 2000'
T 30.15'
L 60.29'



Adolf G. Olsen
Instr. No. 73-8304

This plat subject to the restrictive and protective covenants on file in Douglas County records

MAP FILE M-555 - 529A

MAP FILE M-555 - 529A

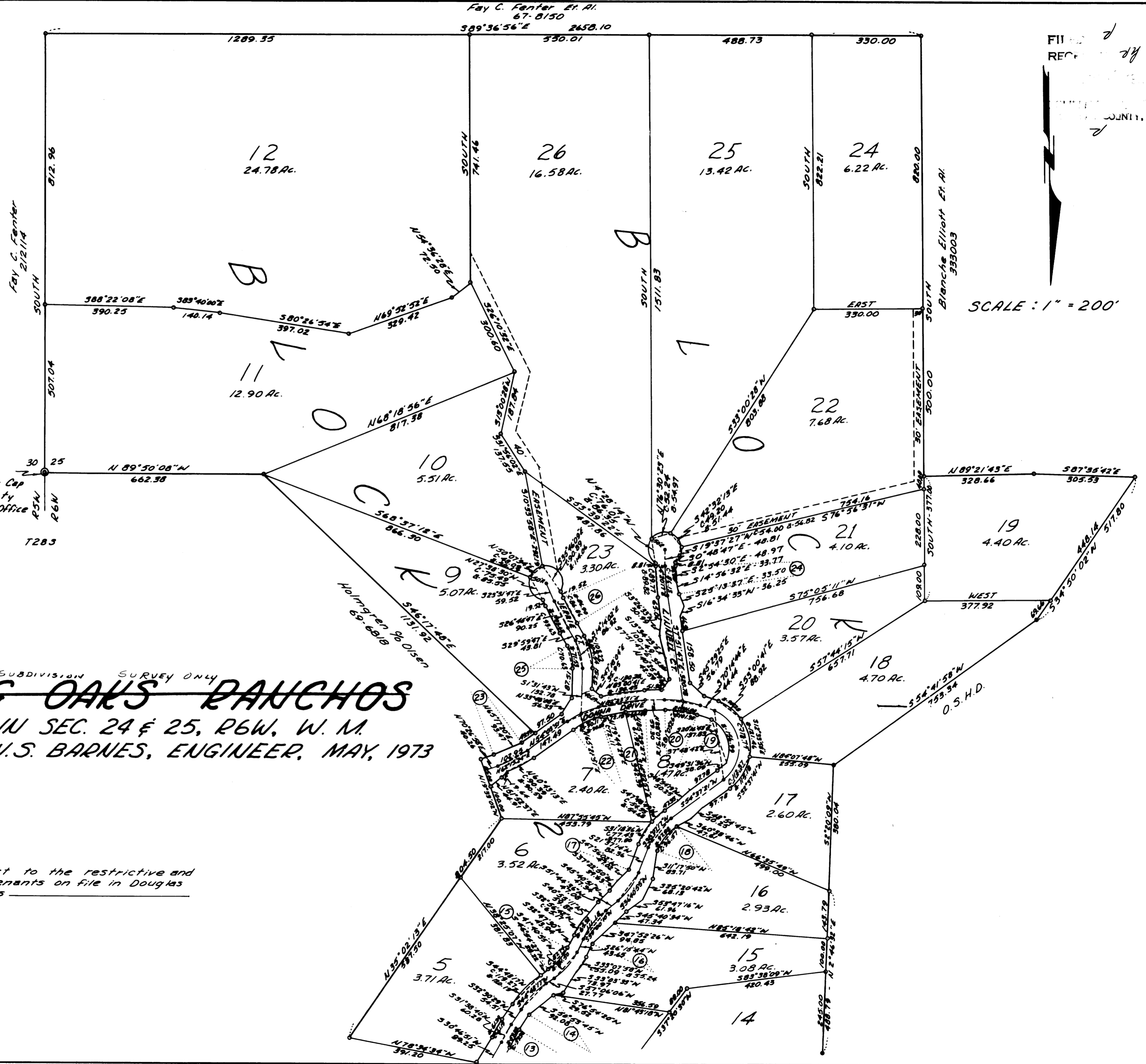
CENTER LINE
CURVE DATA

- ⑭ Δ 24°35'37"
R 250
T 54.49
L 107.31
- ⑮ Δ 30°50'22"
R 200
T 55.16
L 107.65
- ⑯ Δ 25°28'52"
R 250
T 56.52
L 111.18
- ⑰ Δ 30°07'22"
R 200
T 53.82
L 105.15
- ⑱ Δ 33°00'07"
R 200
T 59.25
L 115.20
- ⑲ Δ 124°52'05"
R 120
T 229.87
L 261.52
- ⑳ Δ 21°37'25"
R 300
T 57.29
L 113.22
- ㉑ Δ 11°28'00"
R 700
T 70.28
L 140.09
- ㉒ Δ 22°36'00"
R 259.93
T 51.94
L 102.53
- ㉓ Δ 16°23'07"
R 360
T 51.83
L 102.95
- ㉔ Δ 7°03'00"
R 700
T 43.12
L 86.13
- ㉕ Δ 31°31'30"
R 160
T 45.16
L 88.03
- ㉖ Δ 6°28'00"
R 800
T 45.19
L 90.29

Initial Point
1/4 Cor. Brass Cap
Set by County
Surveyor's Office

UNAPPROVED SUBDIVISION SURVEY ONLY
ROLLING OAKS RANCHOS
A SUBDIVISION IN SEC. 24 & 25, R6W, W. M.
SURVEYED BY W.S. BARNES, ENGINEER, MAY, 1973

This plat subject to the restrictive and
protective covenants on file in Douglas
County Records



FILED
RECORDED
DOUGLAS COUNTY, ORE.

SCALE: 1" = 200'