

FILE 13
REC. 13
di MAR 25 1975
COUNTY SURVEYOR
CLATSOP COUNTY, ORE

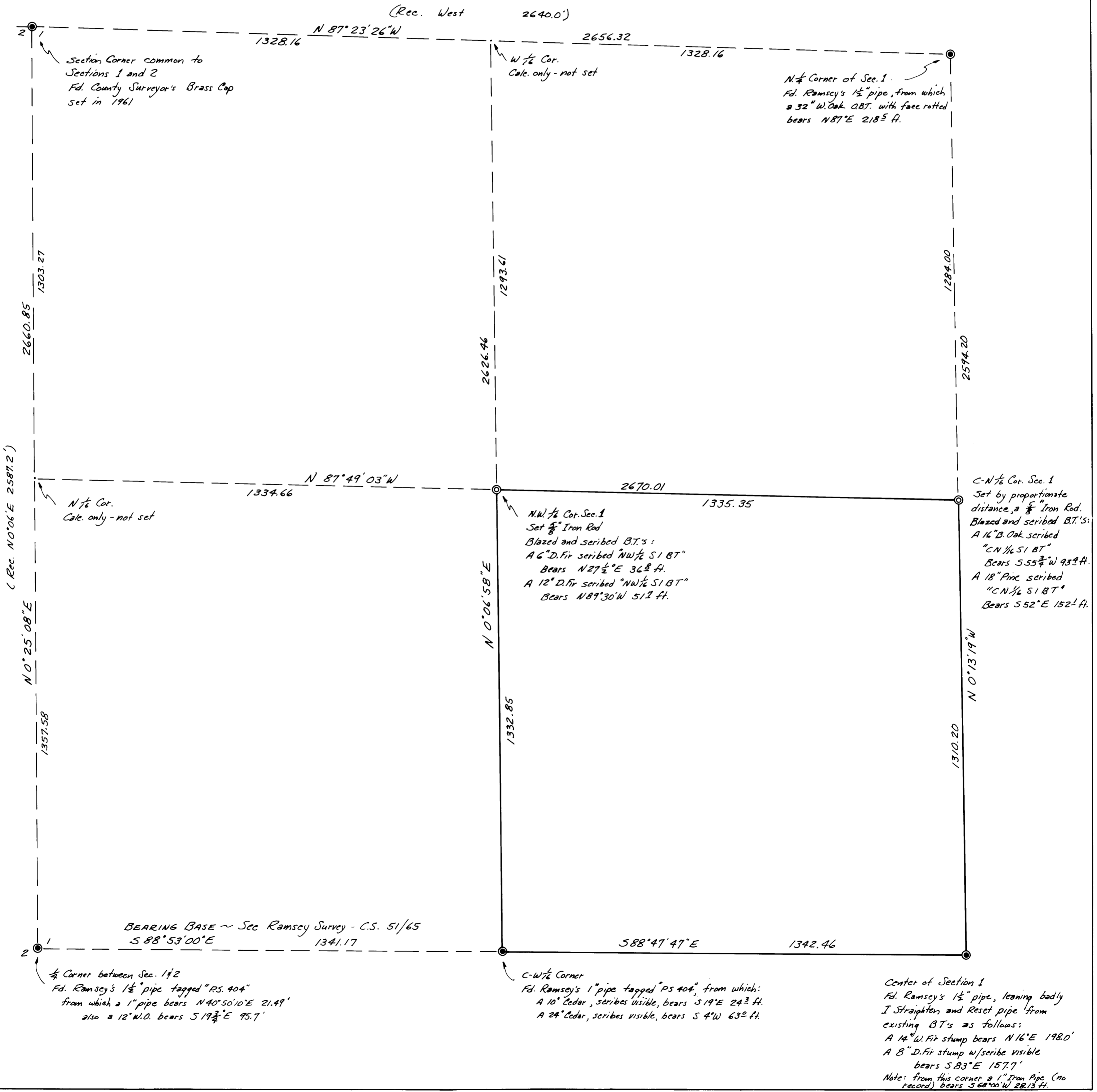
SURVEY TO SUBDIVIDE THE N.W. ¼ OF SEC. 1, T28S, R8W, W.M.

Surveyed for Edward A. Haynes by Victor M. McLind

March 1975

Scale: 1" = 200'

Victor M. McLind



(Rec. West 2640.0')

N 87° 23' 26" W 2656.32

1328.16

W ¼ Cor. Calc. only - not set

N ¼ Corner of Sec. 1. Fd. Ramsey's 1 ½" pipe, from which a 32" W. Oak OBT. with face rotted bears N 87° E 218 ½ ft.

1303.27

2660.85

Section Corner common to Sections 1 and 2. Fd. County Surveyor's Brass Cap set in 1961

1293.61

2626.46

N 87° 49' 03" W 1334.66

N ¼ Cor. Calc. only - not set

2670.01

N.W. ¼ Cor. Sec. 1. Set ¾" Iron Rod. Blazed and scribed B.T.'s: A 6" D. Fir scribed "NW ¼ S1 BT" Bears N 27 ½° E 36 ½ ft. A 12" D. Fir scribed "NW ¼ S1 BT" Bears N 89° 30' W 51 ½ ft.

1335.35

C-N ¼ Cor. Sec. 1. Set by proportionate distance, a ¾" Iron Rod. Blazed and scribed B.T.'s: A 16" B. Oak scribed "CN ¼ S1 BT" Bears S 55 ¾° W 93 ½ ft. A 18" Pine scribed "CN ¼ S1 BT" Bears S 52° E 152 ½ ft.

1357.58

N 0° 25' 08" E 1357.58

N 0° 06' 58" E 1332.85

BEARING BASE ~ Sec Ramsey Survey - C.S. 51/65 S 88° 53' 00" E 1341.17

588° 47' 47" E 1342.46

C-W ¼ Corner. Fd. Ramsey's 1" pipe tagged "PS 404" from which: A 10" Cedar, scribes visible, bears S 19° E 24 ¾ ft. A 24" Cedar, scribes visible, bears S 4° W 63° ft.

1310.20

N 0° 13' 19" W 1310.20

Center of Section 1. Fd. Ramsey's 1 ½" pipe, leaning badly. I Straighten and Reset pipe from existing B.T.'s as follows: A 14" W. Fir stump bears N 16° E 198.0' A 8" D. Fir stump w/ scribe visible bears S 83° E 157.7' Note: from this corner a 1" Iron Pipe (no record) bears S 68° 00' W 28.13 ft.