

COUNTY SURVEYORS FILE DATA  
DO NOT REMOVE FROM OFFICE

# SURVEY FOR DOUGLAS COUNTY LAND DEPT. SECS. 12 & 13, T. 22S., R. 6 W., W. M.

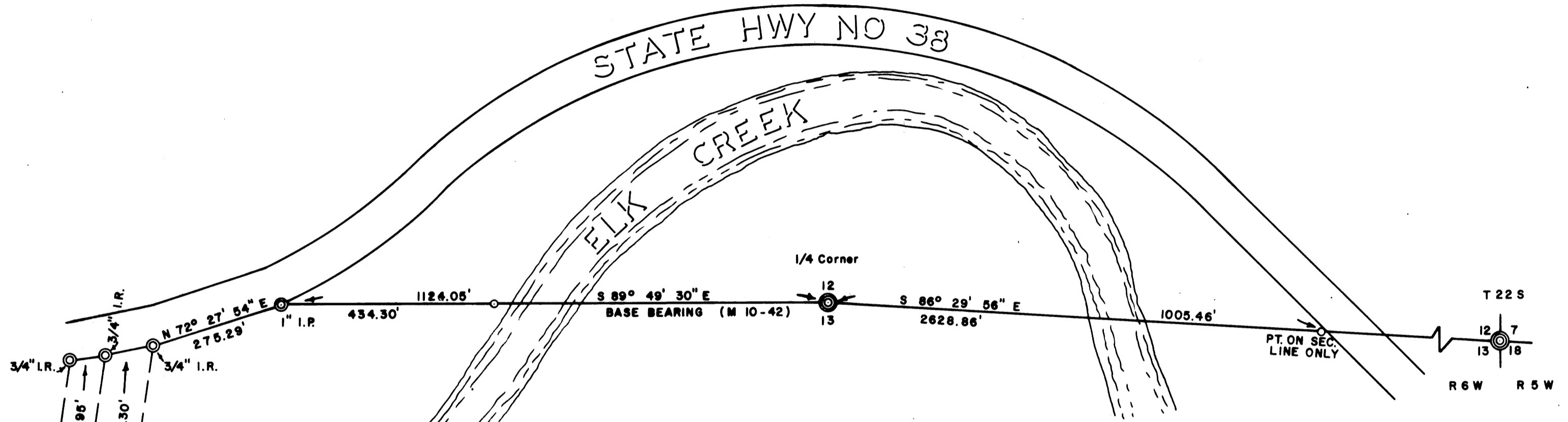
FILED <sup>2</sup>  
RECEIVED <sup>28</sup>

DEC 23 1974

COUNTY SURVEYOR  
DOUGLAS COUNTY, OREG.

C.S. 57 / 15

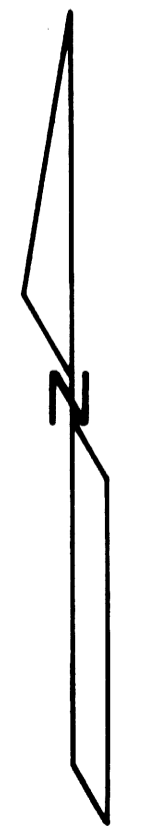
M55+5



### LEGEND

- ⊙ Fd. Brass Cap
- ⊙ Fd. Monuments - as noted
- Set 5/8" Iron Rod

Scale: 1" = 200'



True North

SURVEYED BY  
COUNTY SURVEYOR'S OFFICE  
DOUGLAS COUNTY, OREGON

DEC., 1974

FRANCIS L. INGRAM  
COUNTY SURVEYOR

REGISTERED  
PROFESSIONAL  
LAND SURVEYOR

*Francis L. Ingram*

OREGON  
JULY 11, 1969  
FRANCIS L. INGRAM  
902

C.S. 57 / 15  
M55+5

CS FILE NOT SCANNED

SUPPORT DATA FOR SURVEY