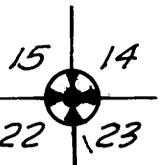


COUNTY SURVEYORS FILE DATA
DO NOT REMOVE FROM OFFICE

FILED 2
RECEIVED 24
MAR 6 1975

COUNTY SURVEYOR
DOUGLAS COUNTY, ORE.

SECTION CORNER
Fnd BLM brass cap
dated 1963
Bearing trees in evidence



N 0° 40' 43" W
2589.03



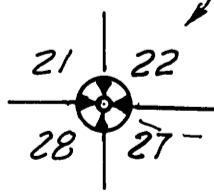
1/4 CORNER SECTIONS 22 & 23
Fnd T iron by Haines at corner
20" fir S 74° W 11 1/2 original BT
40" fir S 55° E 9 1/4 bark scribed
14" fir S 43° W 13 1/4 fuses
Set 2" iron pipe with brass cap
Mkd T 22 S R 6 W 1/4 S 22 | S 23 1975
RPLS 377 & place T iron in hole to South
Rescribe 40" fir S 55° E 9 1/4 1/4 S 23 BT

N 0° 31' 57" W
2742.66

SURVEY FOR CONE LUMBER CO.
SECTION 22 T 22 S, R 6 W, W.M.
EIMSTAD & ASSOCIATES
1717 WASHINGTON ST EUGENE,
FEBRUARY 1974 1975
SCALE
1 INCH = 500 FEET

SOUTH & EAST LINES OF SECTION 22
BLAZED AND FLAGGED

SECTION CORNER
Fnd BLM Brass cap
dated 1963 - bearing
trees in evidence



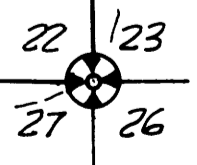
N 88° 18' 55" W
2703.24

1/4 CORNER SECTIONS 22 & 27
Fnd BLM brass cap dated 1963
bearing trees in evidence



SECTION CORNER
Fnd BLM Brass cap
dated 1963
Bearing trees in evidence

N 88° 23' 04" W
2705.36



REGISTERED
PROFESSIONAL
LAND SURVEYOR

OREGON
MAY 4, 1956
WILLIAM A. EIMSTAD
377

MAP FILE M 55 - 48

MAP FILE M 55 - 48