

COUNTY SURVEYORS FILE DAY
DO NOT REMOVE FROM OFFICE

SURVEY TO ESTABLISH PROPERTY CORNERS
IN SEC. 5, T29S, R6 W. W.M.

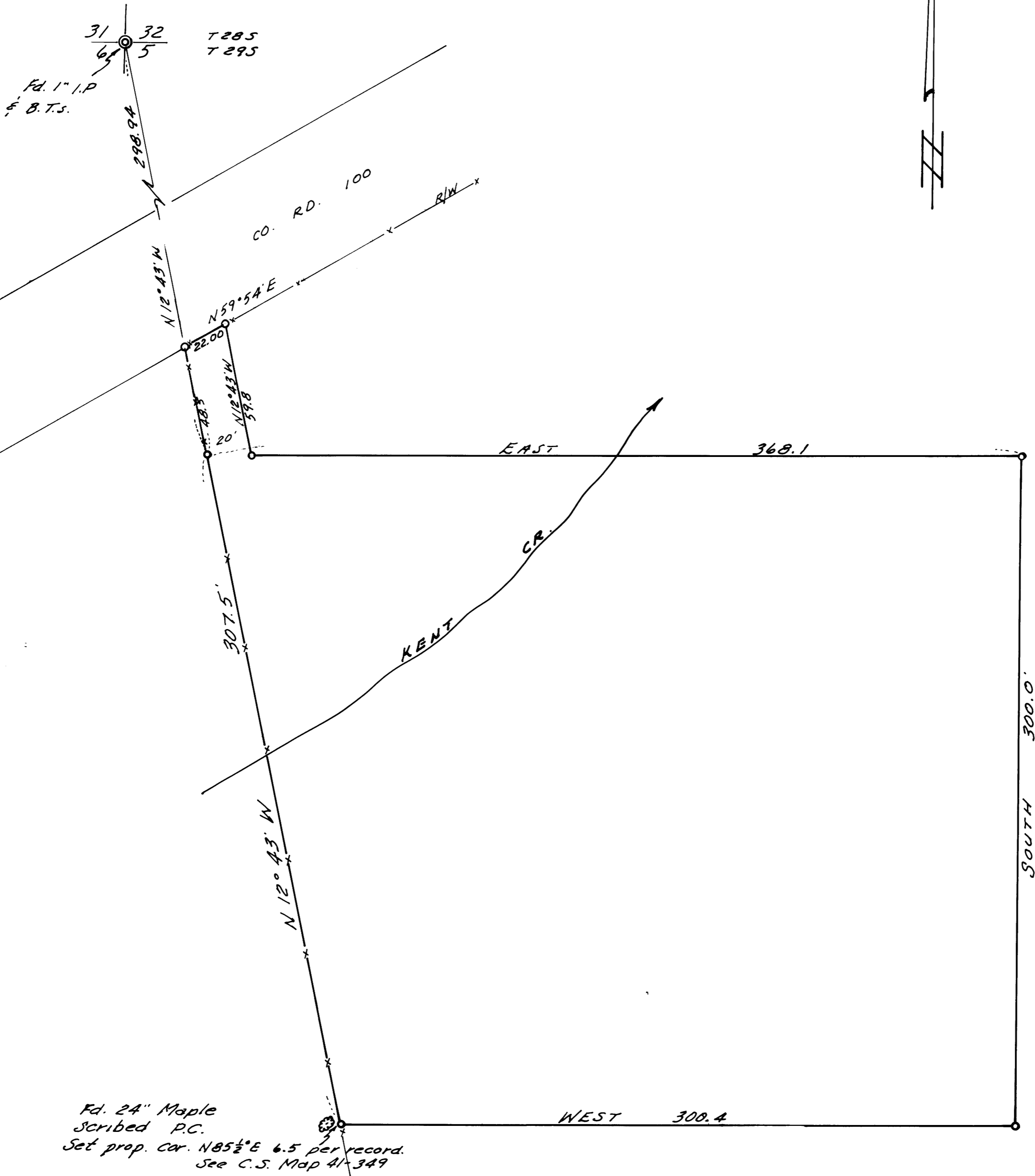
SURVEYED FOR- CHAS. WARD
SURVEYED BY- W. S. BARNES

FEB. 1975
SCALE 1"=40'

FILED
RECORDED

MAR 10 1975

COUNTY ENGINEER
DEPT. OF ASSESSMENT, ORE.



Fd. 24" Maple
Scribed P.C.
Set prop. cor. N 85 1/2° E 6.5 per record.
See C.S. Map 41-349

• 5/8" iron rods set.
Base brg. taken from west R. see Refr. Map- C.S. 41-349

REGISTERED PROFESSIONAL
SURVEYOR
W. S. Barnes