

COUNTY SURVEYORS FILE DATA  
DO NOT REMOVE FROM OFFICE

FILED  
RECEIVED  
FEB 18 1975  
COUNTY SURVEYOR  
DOUGLAS COUNTY, ORE.

# HARBORD ADDITION

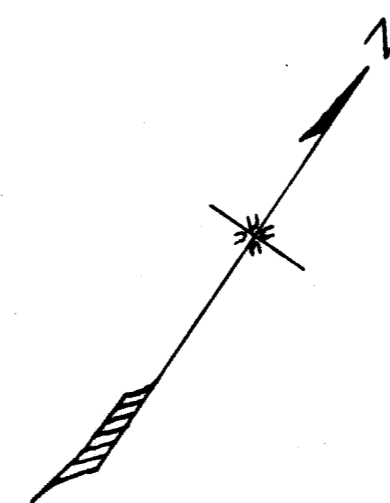
AN ADDITION TO RIDDLE, DOUGLAS COUNTY, OREGON.

SITUATED IN THE U.G.C. VANDENBOSCH D.L.C. No. 47, IN SEC. 24, T.30S, R.6E, W.M.

Surveyed Jan. 1947

By A. H. Mayne  
Registered Civil Engineer No. 2341

Scale - 1" = 100'



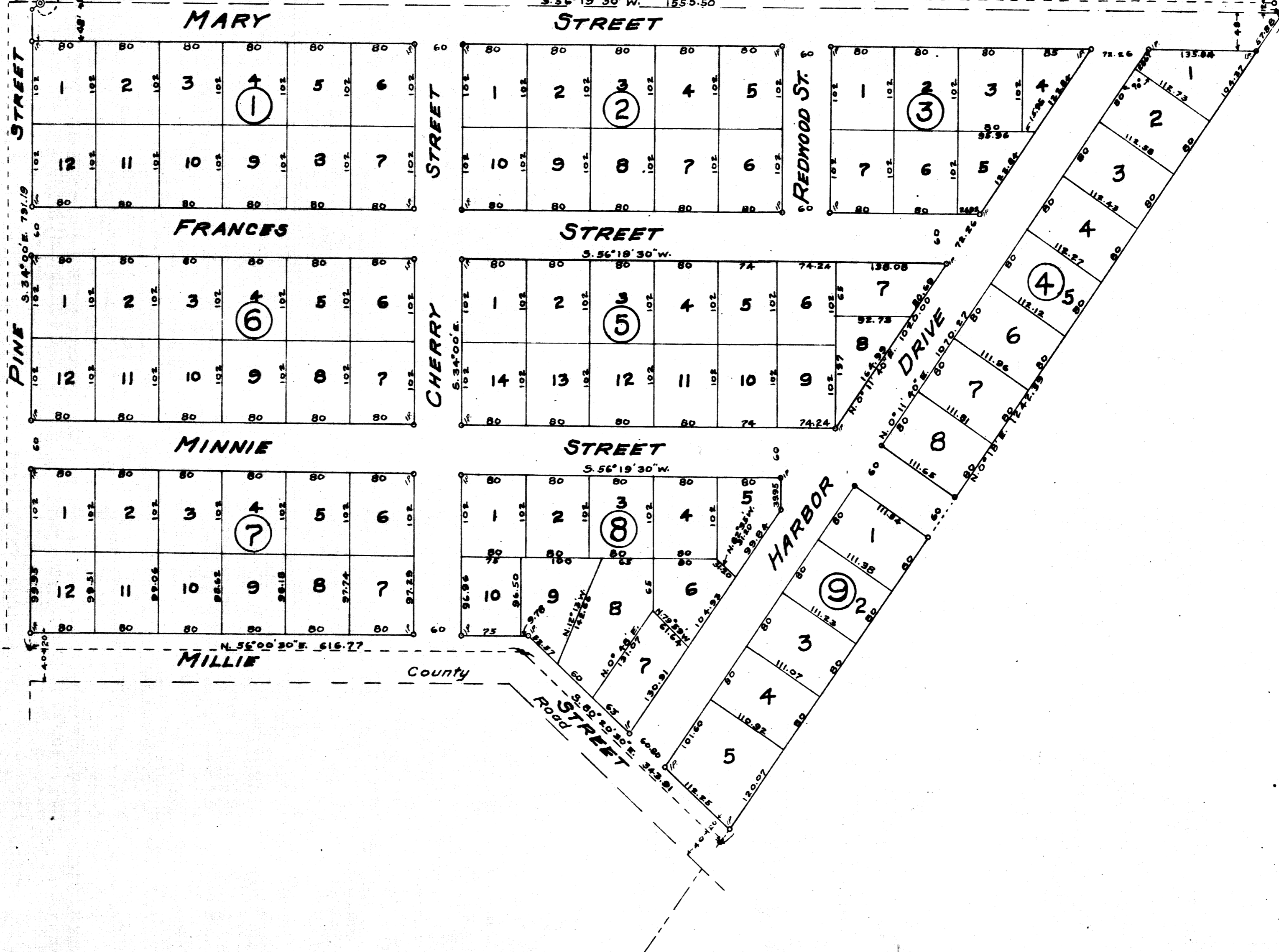
N.E. Corner original Plot of RIDDLE

334'00" E  
334'00" E

N 56° 19' 30" E 382.91

Initial Point  
N 22° 00' E 11.95

MAPLE PARK ADD



N 56° 00' 30" E 1002.43

S 24° 00' E 21.52

R.I.P  
Center of Intersection  
5th and E Streets.

REC'D FROM DENNIS V. FANTZ, PORTLAND 2/15  
FILED HARBOR ADD. IS Vol 11 Pg. 39 (9/56)

SEC 24 30S

T-1697  
6E  
2W

C.S. File  
Map File M-557-11