

FILED 7
RECEIVED 27
FEB 18 1975

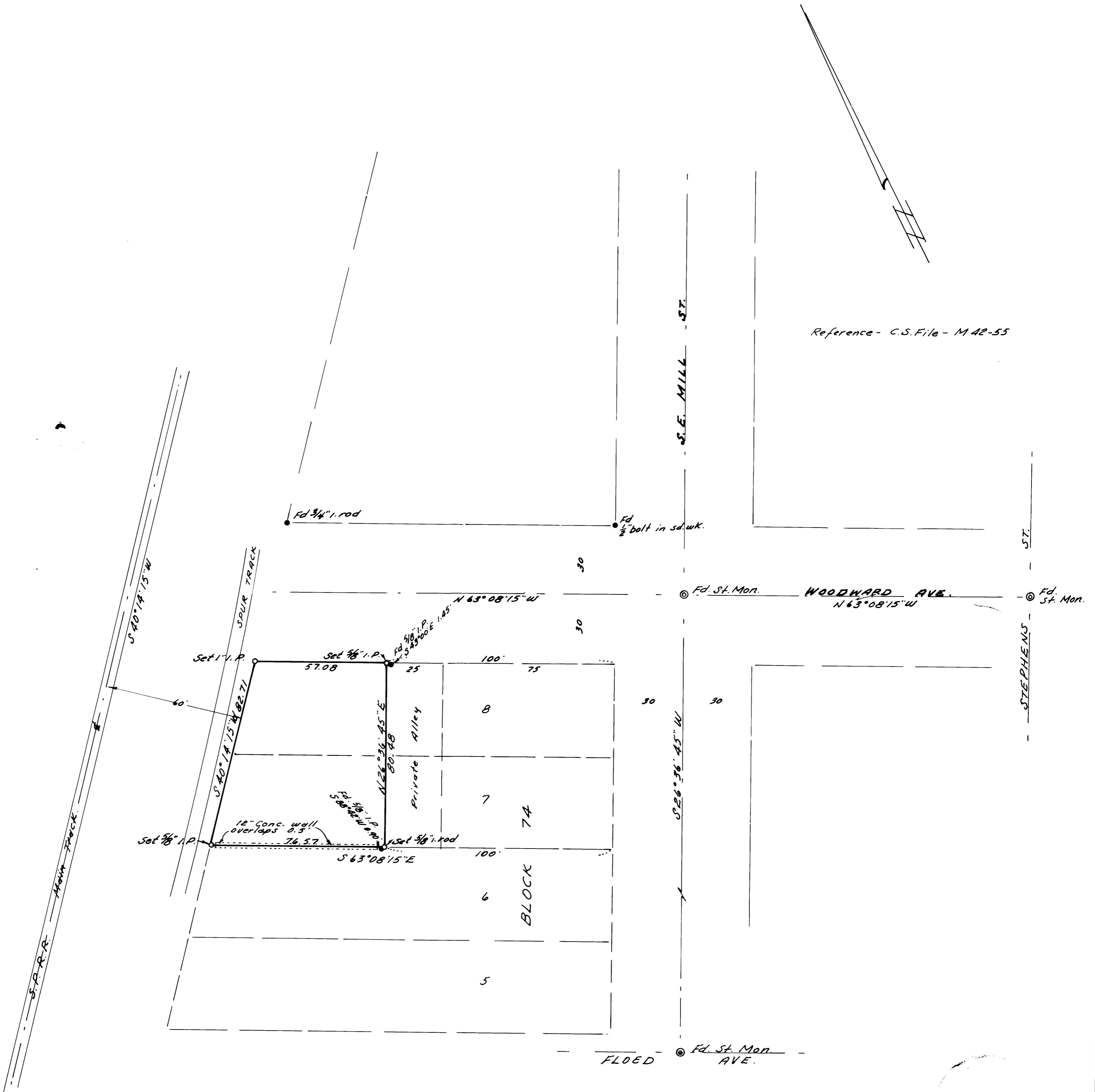
COUNTY SURVEYOR
DOUGLAS COUNTY, ORE.
7

SURVEY IN LOTS 7 & 8, BLOCK 74, ROSE'S SOUTHERN ADD.
ROSEBURG, ORE.

SEC. 24, T27S, R6W.W.M.

SURVEYED FOR - SO. ORE. LOG SCALING BU.
SURVEYED BY - W. S. BARNES

FEB. 1975
SCALE 1" = 30'



W. S. Barnes