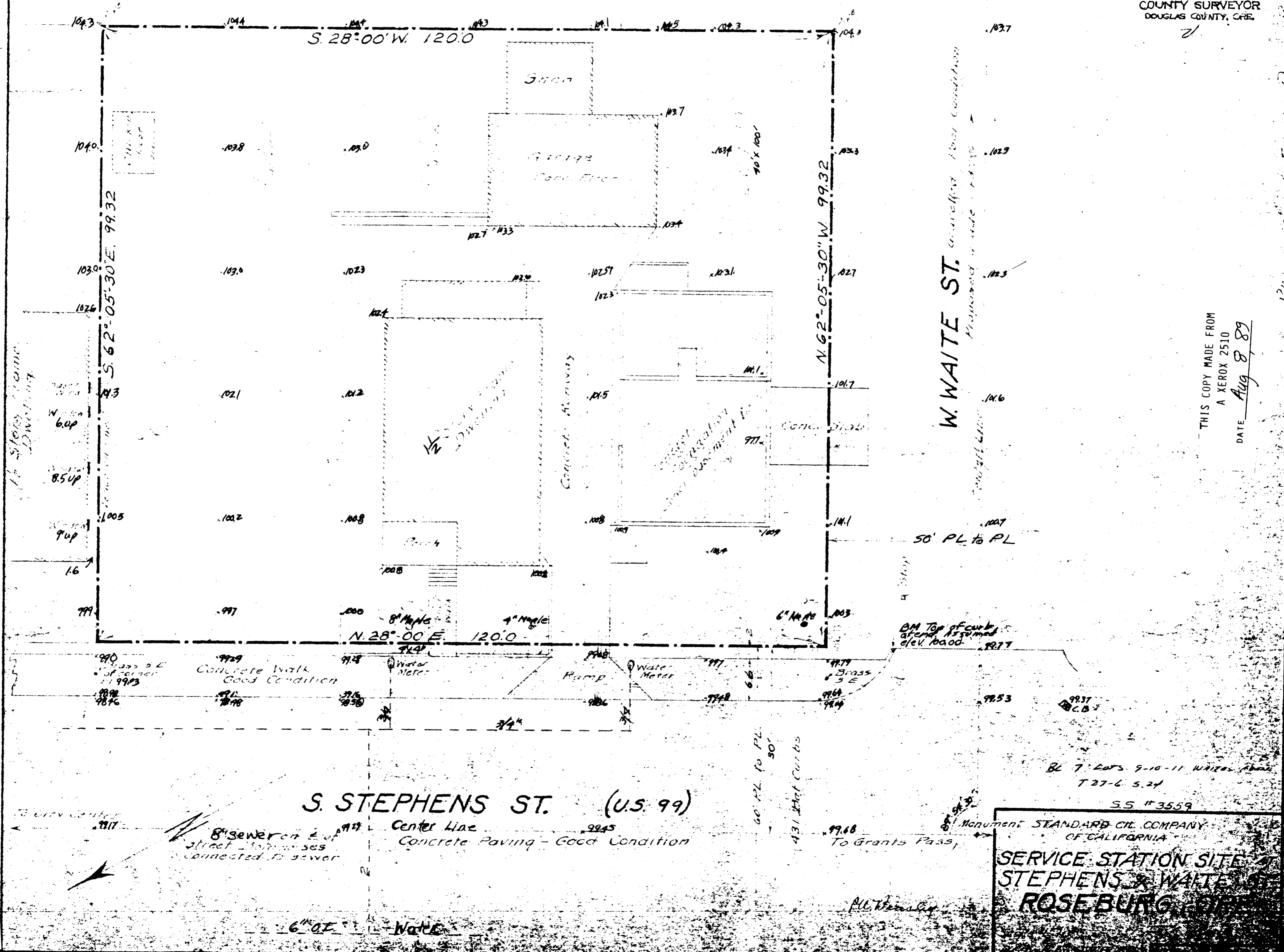


COUNTY SURVEYORS FILE DATA  
DO NOT REMOVE FROM OFFICE

FILED  
RECEIVED 77  
FEB 18 1975  
COUNTY SURVEYOR  
DOUGLAS COUNTY, ORE.

ALLEY *unimproved*



THIS COPY MADE FROM  
A XEROX 2510  
DATE Aug 8 89

STANDARD OIL COMPANY  
OF CALIFORNIA  
SERVICE STATION SITE  
STEPHENS & WAITE ST.  
ROSEBURG, ORE.

MAP FILE 55-34

MAP FILE 55-34