

COUNTY SURVEYORS FILE DATA
DO NOT REMOVE FROM OFFICE

FILED ✓
RECEIVED ✓

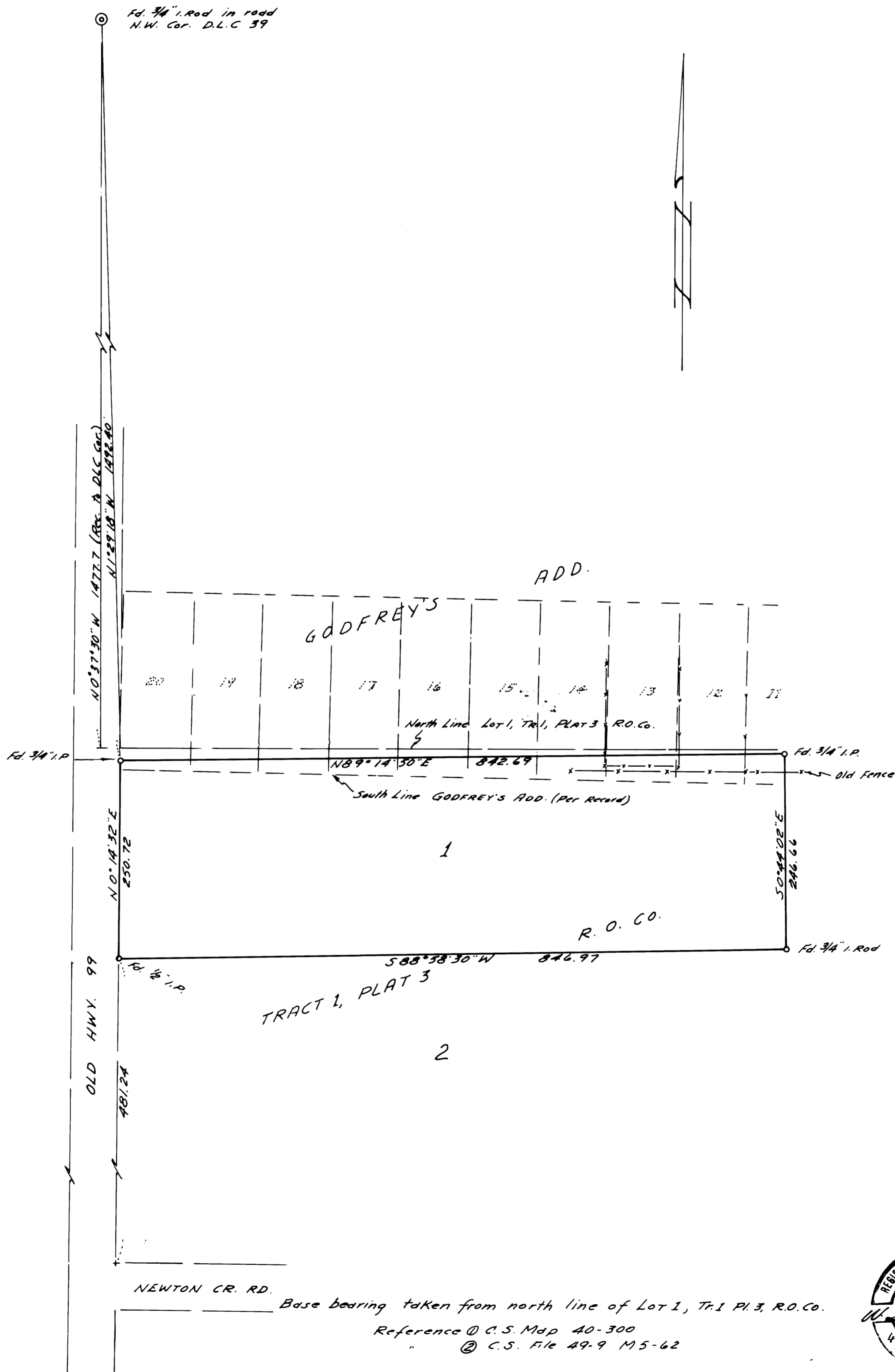
FEB 13 1975

COUNTY SURVEYOR
DOUGLAS COUNTY, ORE.

SURVEY IN SEC. 1, T 27 S, R 6 W. W.M.

SURVEYED FOR - AL SHAW
SURVEYED BY - W.S. BARNES

OCT. 1974
SCALE 1"=100'



NEWTON CR. RD.

Base bearing taken from north line of Lot 1, Tr. 1 Pl. 3, R.O. Co.

Reference @ C.S. Map 40-300

@ C.S. File 49-9 M5-62

