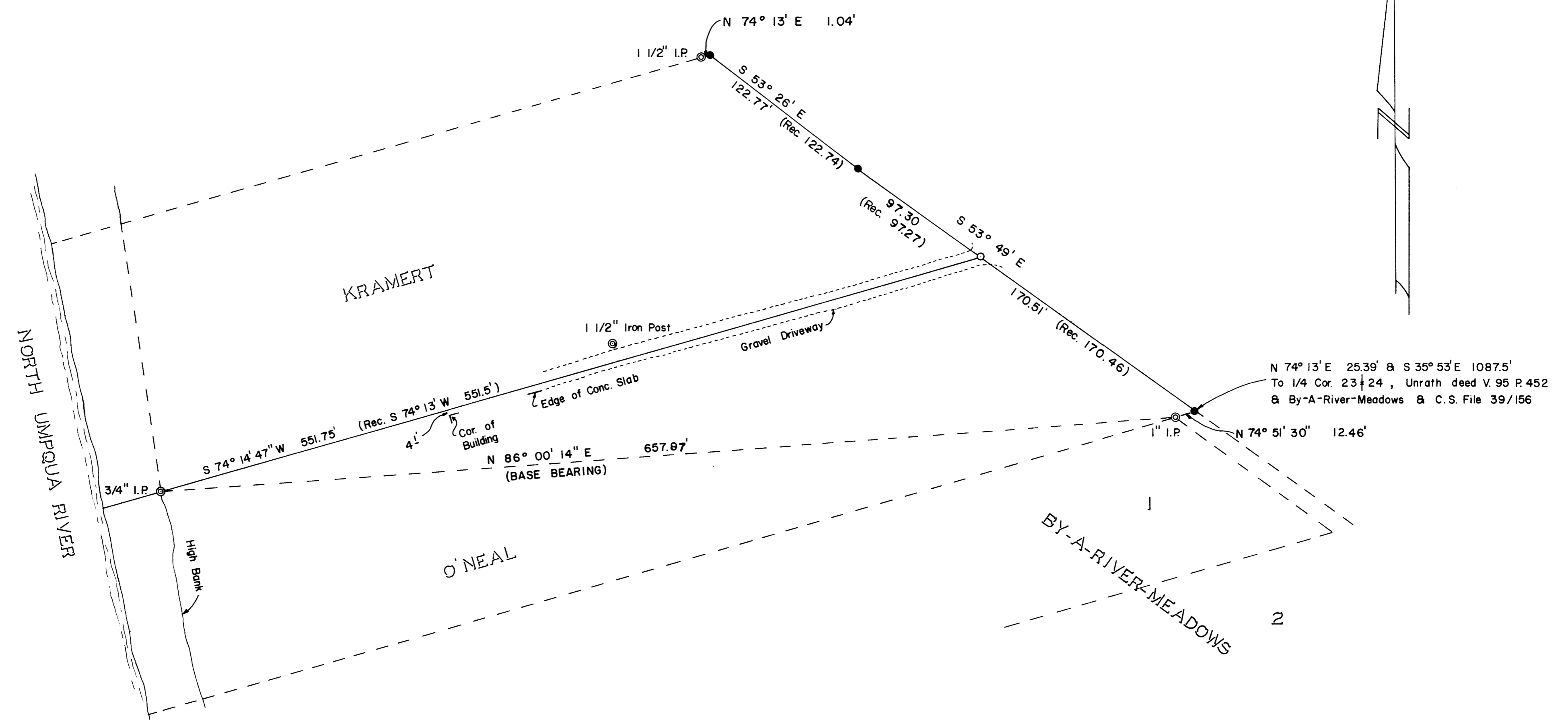


FILED 2  
RECEIVED 24

JAN 28 1975

COUNTY SURVEYOR  
DOUGLAS COUNTY, ORE.



N 74° 13' E 25.39' & S 35° 53' E 1087.5'  
 To 1/4 Cor. 23 & 24, Unrath deed V. 95 P. 452  
 & By-A-River-Meadows & C.S. File 39/156

LEGEND

- ⊙ FD. MONUMENTS - AS NOTED
- COMPUTED, NOT SET
- SET 5/8" IRON ROD

BEARINGS BASED ON INVERSE FROM  
 N.W. COR. TO S.E. COR. OF O'NEAL  
 PROPERTY AS PER M 38-50.

SURVEY TO SET PROPERTY CORNER  
 IN SEC. 23, T. 26 S., R. 6 W., W.M.  
 FOR ARTHUR KRAMERT  
 BY DOUGLAS COUNTY SURVEYORS OFFICE  
 FRANCIS L. INGRAM, COUNTY SURVEYOR  
 JAN. 1975 SCALE 1" = 50'

REGISTERED  
 PROFESSIONAL  
 LAND SURVEYOR

*Francis L. Ingram*

OREGON  
 JULY 11, 1969  
 FRANCIS L. INGRAM  
 902

COUNTY SURVEYORS FILE DATA  
 DO NOT REMOVE FROM OFFICE

Cap 1110 M557 25  
 05 52 / 19

CS FILE NOT SCANNED

SUPPORT DATA FOR SURVEY