

COUNTY SURVEYORS FILE DATA
DO NOT REMOVE FROM OFFICE

FILED ✓
RECEIVED \$

JAN 23 1975

COUNTY SURVEYOR
DOUGLAS COUNTY, ORE.

Survey To Set Property Corners In Lot 31, Tract 1, Plat 1, Roseburg Orchard Co., In Sec. 6, T27S, R5W, W.M. For Francis D. Engle SEC. 1, T 27-6 By B.H.W. Eng. & Surveying, Inc.

Scale 1" = 50' January 1975

- Found Monuments
- Set 3/4" Iron Pipe

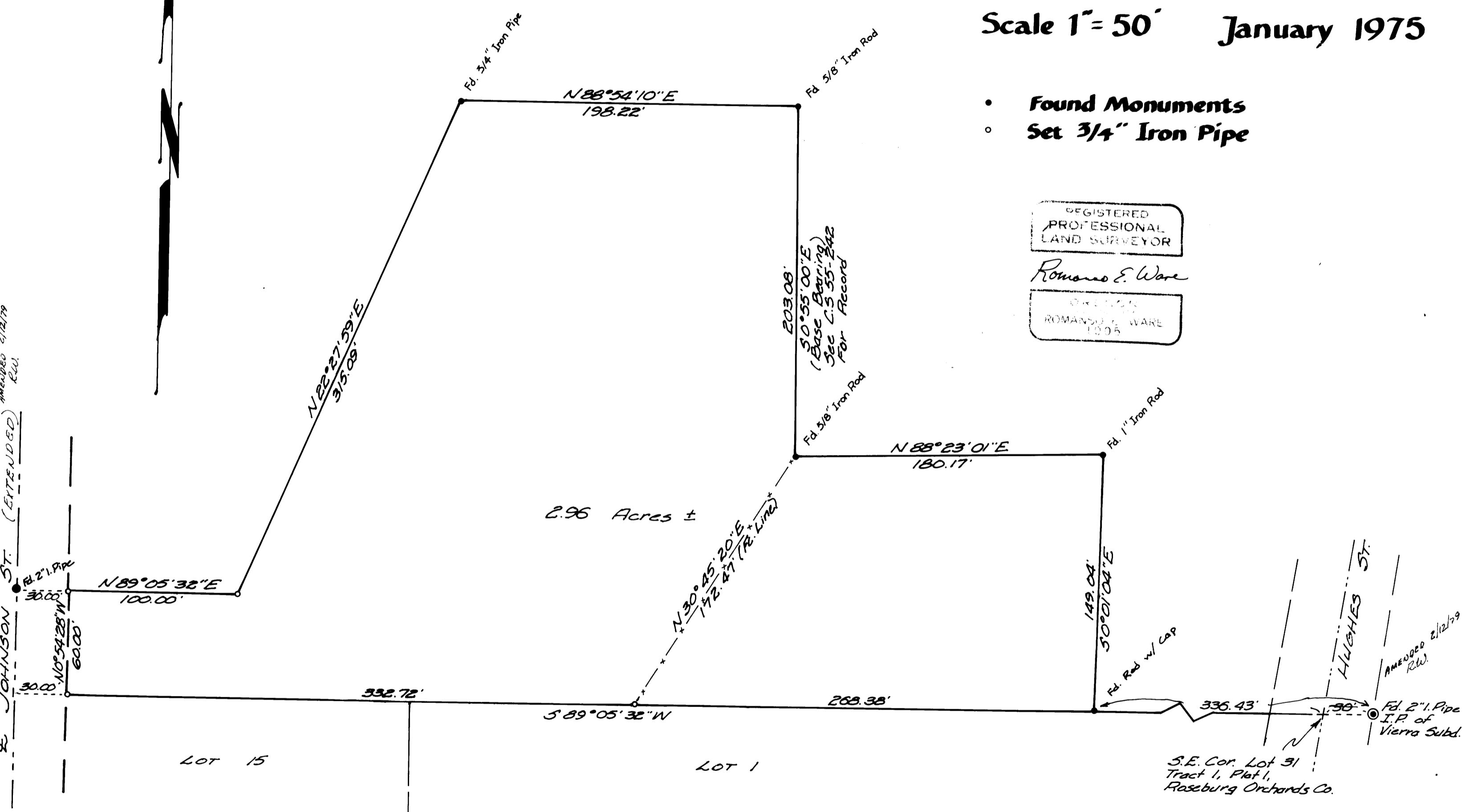
REGISTERED
PROFESSIONAL
LAND SURVEYOR

Romano E. Ware

CREATED
ROMANO E. WARE
1975

MAP FILE M55-24
JOHNSON ST. (EXTENDED)
AMENDED 2/12/79
R.W.

MAP FILE M55-24



BLOCK 5, NEWTON CREEK HOMESITES

MAP FILE M55-24