

COUNTY SURVEYORS FILE DATA
DO NOT REMOVE FROM OFFICE

FILED RECEIVED
JAN 23 1975
COUNTY SURVEYOR
DOUGLAS COUNTY, ORE.

MAP FILE M 55-23

SURVEYED TO ESTABLISH LOT COR. LOTS 19 & 20, BLK 37, KINNEY'S IMPROVED PLAT, SEC. 18, T. 27S. R. 5W.

SURVEYED FOR LAURENCE PETERSON JAN. 1975

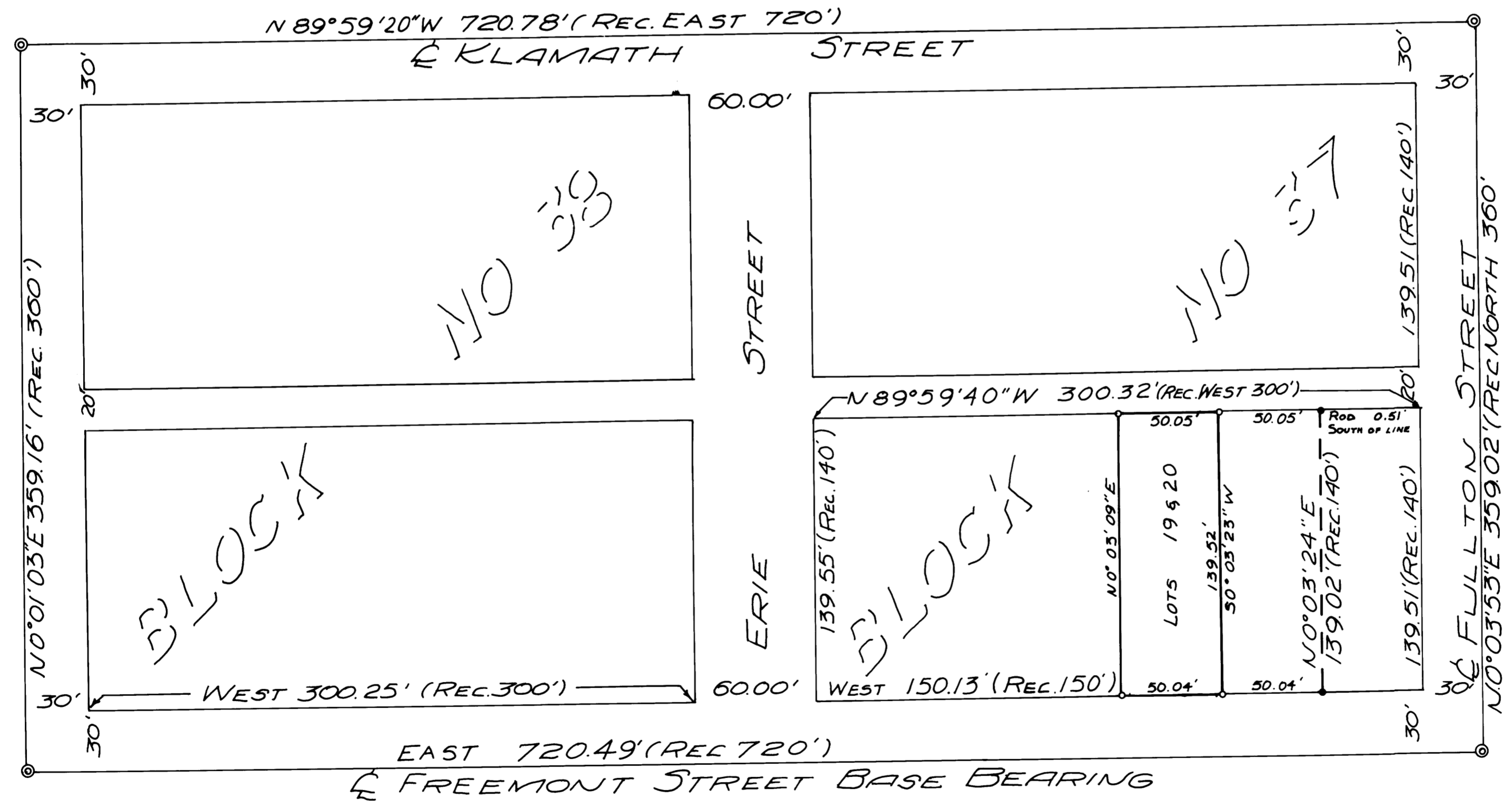
SURVEY BY BHW ENG. & SURVEYING INC.

- SET 3/4" IRON PIPE
 - FD. 5/8" IRON ROD
 - FD. STREET MONUMENT
- SEE M 37-36
SCALE 1" = 50'

REGISTERED
PROFESSIONAL
LAND SURVEYOR

Romano E. Ware

OREGON
NOV 19 1973
ROMANSO E WARE
1005



BASE BEARINGS KINNEY'S IMPROVED PLAT

MAP FILE M 55-23