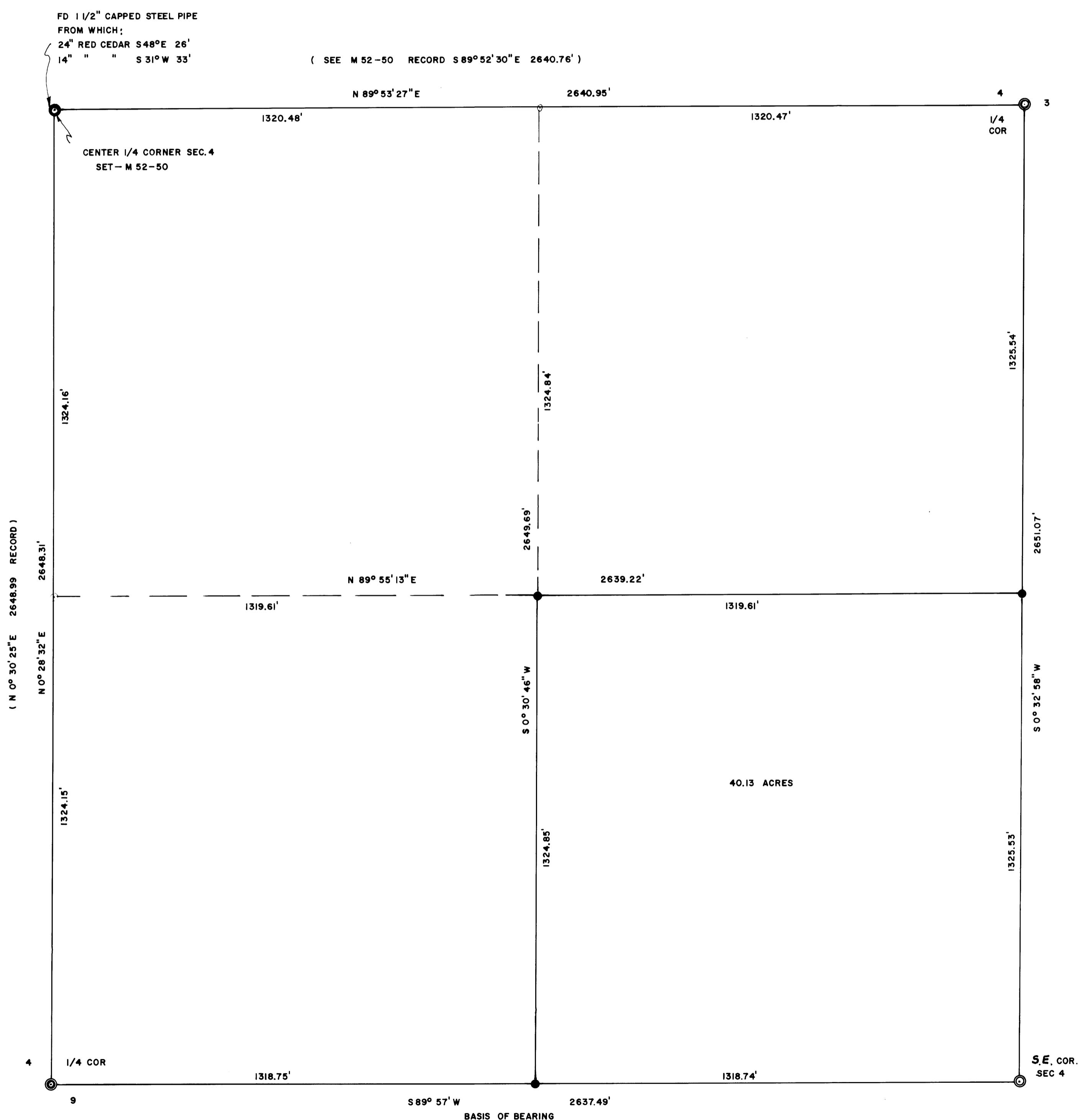


COUNTY SURVEYORS FILE DATA  
DO NOT REMOVE FROM OFFICE

FILED  
RECEIVED  
JAN 23 1975  
COUNTY SURVEYOR  
DOUGLAS COUNTY, ORE.

SURVEY FOR JOE PAULETTO  
LOCATION S.E. 1/4, SECTION 4, T26S, R7W, W.M.  
DOUGLAS COUNTY, OREGON  
BY HAROLD BALL - CIVIL ENGINEER  
JAN, 1975



- SET 5/8" I. ROD
- ⊙ FD. BRASS CAP MONUMENT