

COUNTY SURVEYORS FILE DATA
DO NOT REMOVE FROM OFFICE

SURVEY IN SECTION 18, TOWNSHIP 28 SOUTH, RANGE 5 WEST, WILLAMETTE MERIDIAN
Surveyed for Albert Sigfridson by Don E. Garrett

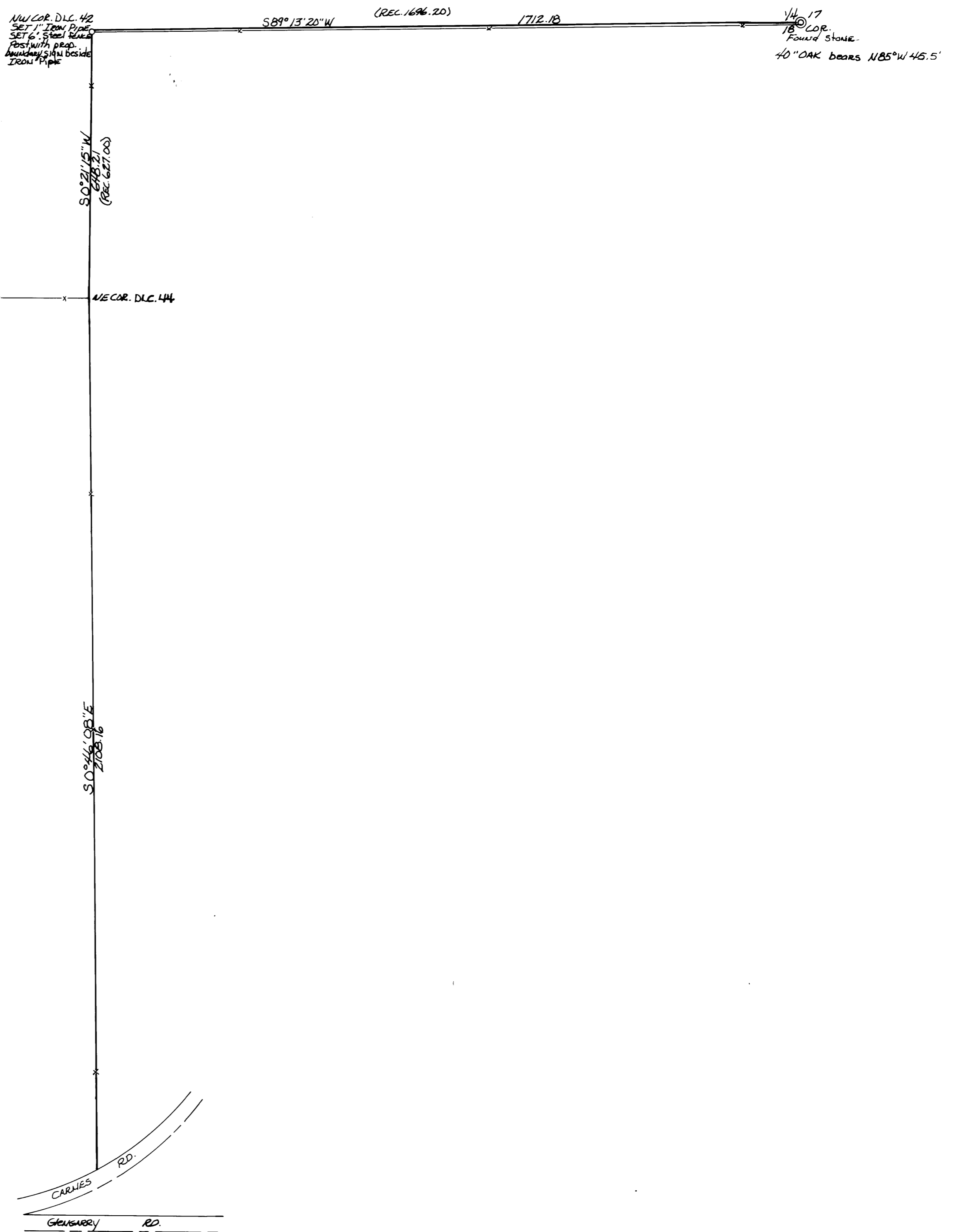
January, 1975

NW Corner DLC 42 set by testimony of prop. owner and existing fence line
Base bearing Solar Observation taken April 10, 1972

Scale 1" = 200'

FILED
RECEIVED
JAN 10 1975

COUNTY SURVEYOR
DOUGLAS COUNTY, ORE.



REGISTERED
PROFESSIONAL
LAND SURVEYOR

Don E. Garrett

OREGON
JULY 14, 1961
DON E. GARRETT
544