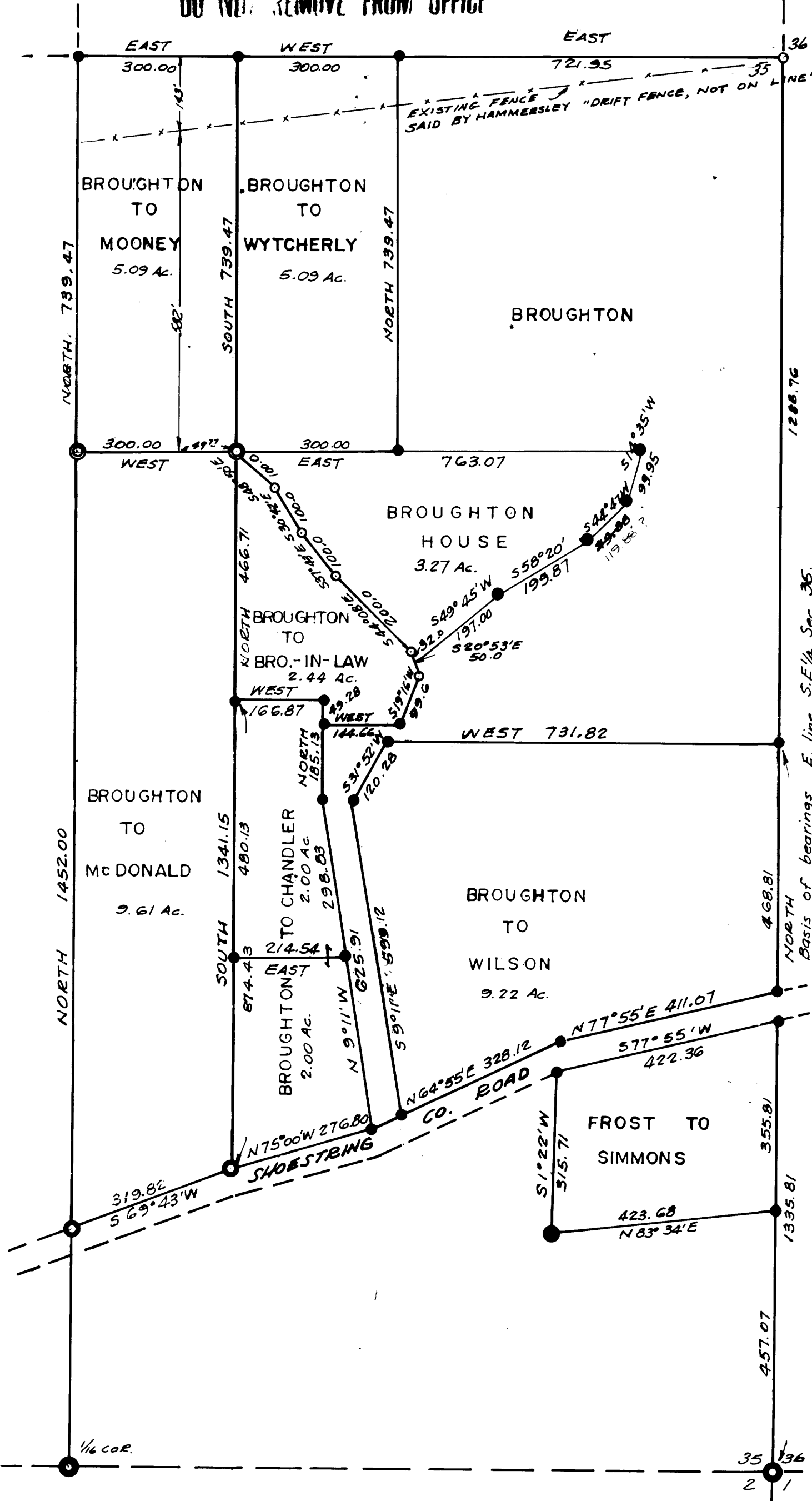


SURVEY FOR DESCRIPTION & TO SET PROPERTY CORNERS IN SE 1/4 OF SECTION 35, T.30S. R.6W. W.M.

COUNTY SURVEYORS FILE DATA
DO NOT REMOVE FROM OFFICE

FILED
RECEIVED
MAY 10 1954

COUNTY SURVEYOR
DOUGLAS COUNTY, ORE.
mf



FOR: HENRY BROUGHTON
BY: HARRISON MUNGER



MAY 1954 SCALE: 1" = 200'

I, Harrison M. Munger, hereby certify that
This map was prepared on December 27, 1974,
from original field notes.

Harrison M. Munger
HARRISON M. MUNGER
RE 3571

LEGEND

- ——— Not found or set
- ——— Set 1/2" iron rod
- ⊙ ——— Set 3/4" iron pipe
- ——— Set 1-1/2" axle
- ⊙ ——— Found I.P.